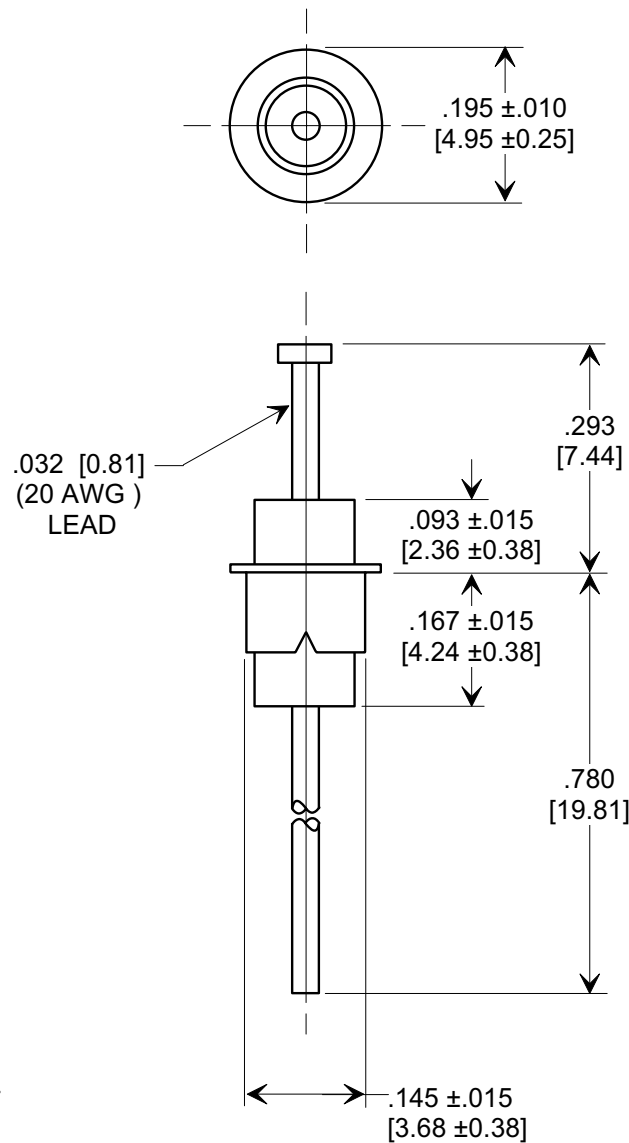
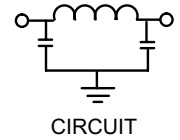
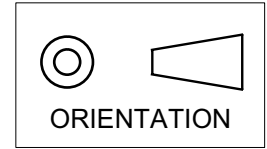


MARKETING SALES DRAWING
DIMENSIONS IN INCHES - DO NOT SCALE THIS DRAWING
DIMENSIONS IN METRIC - []

Electrical Testing
per Tusonix standard
test plans and Mil-Std-202
Test Methods.



- NOTES:
- TUSONIX STANDARD PART NUMBER: 4101-002.
TUSONIX RoHS COMPLIANT PART NUMBER: 4101-002 LF.
CUSTOMER MUST SPECIFY STANDARD OR RoHS PART NUMBER WHEN ORDERING.
 - RoHS COMPLIANT PART MARKED WITH GREEN DOT FOR IDENTIFICATION.

MIN. CAP. (pF)	WORKING VOLTAGE (WVdc)		CURRENT Idc.	I.R. MIN. @ 100 (VDC.)	DWV (VDC)	MINIMUM NO LOAD INSERTION LOSS (dB) AT 25°C PER MIL-STD-220			
	85°C	125°C				10MHz	100MHz	1GHz	10GHz
1750	250	125	10A	10 G Ω	500	5	50	60	60

X-2015 Rev-0	REVISION RECORD		Eyelet Style EMI Filter	Title	
	0	Original Release C.O.		EYELET STYLE EMI FILTER	
	1	DRAWING REVISED LE 12-9-83			
	2	WAS SK6644-070-S LE 1-13-84		Drawn E.C. 02-26-97	Scale 4 X
	3	DIMS. AND TOL. REVSD., DWG. RELEASED LE 1-8-85		Approved T.C. 2-26-97	
	4	C.O. 1653		TUSONIX TUCSON, ARIZONA	
	5	CURRENT UNIT "A" ADDED L.E. 8-20-85			
	6	C.O. 2595		A	
7	RDRWN TO COMP. FRMT., RMVD WSHRS, CHGD DIMS. .093 WS .113, .167 WS .177 EC 2-26-97	4101-002			
8	970224-6				
	ADDED RED EPOXY COATING. S.M. 07-15-98				
	19980715-6-01				
	ADDED METRIC, NOTES, CIRCUIT I.R. & DWV. S.M. 03-01-05				
	20050223-5-04				
	NOTE 1 REV'D (2) SPACES ADDED BETWEEN 4:101-0002 AND LF L.E. 03-14-05				
	20050314-1-01				