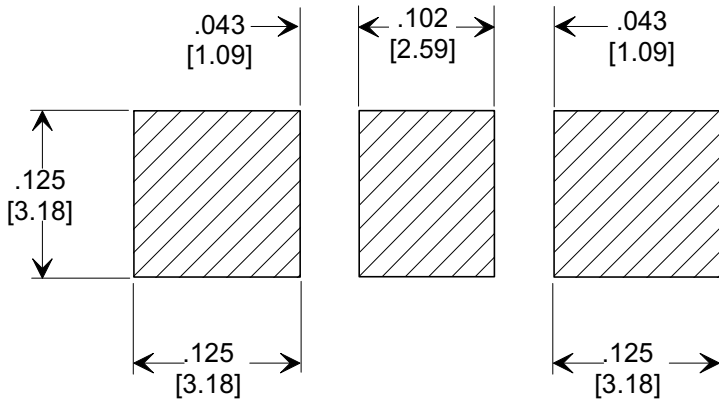
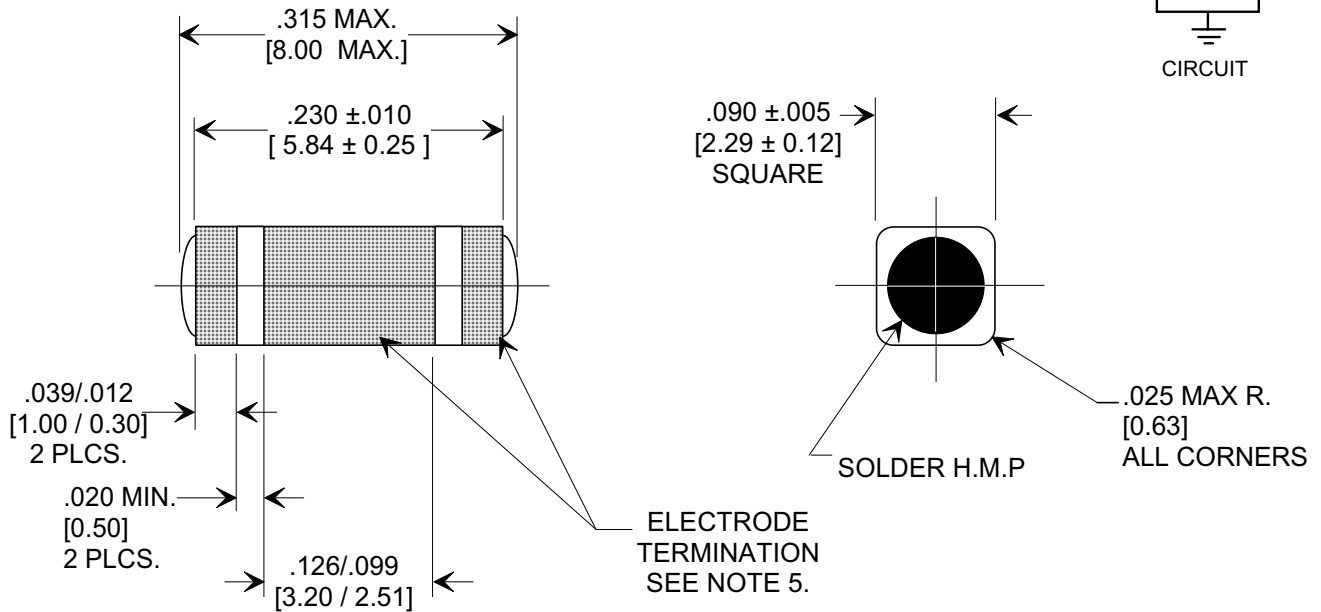
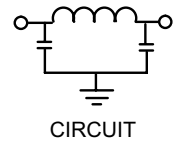
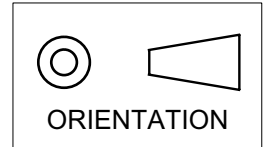


MARKETING SALES DRAWING

DIMENSIONS IN INCHES - DO NOT SCALE THIS DRAWING
 DIMENSIONS IN METRIC []

Electrical Testing
 per Tusonix standard
 test plans and Mil-Std-202
 Test Methods.



SUGGESTED MOUNTING PATTERN

1. INDUCTANCE TO BE 0.1 μH MINIMUM.
2. PACKAGE: BULK OR BLISTER TAPE TO IEC-60286-3 TYPE II AND EIA-481-A.
3. TUSONIX STANDARD PART NUMBER: 4700-005. TUSONIX RoHS COMPLIANT PART NUMBER: 4700-005 LF. CUSTOMER MUST SPECIFY STANDARD OR RoHS PART NUMBER WHEN ORDERING.
4. PART MARKING: STANDARD PART: NO MARKING. RoHS PART: LABELED ON PACKAGING ONLY.
5. ELECTRODE TERMINATION: STANDARD 60/40 SOLDER; RoHS COMPLIANT - MATTE TIN.

| CAP. | TOLERANCE | WVDC | | TEST VOLTAGE | I.R.MIN. @ 100 (VDC.) | IDC | TYPICAL NO LOAD INSERTION LOSS dB AT 25°C PER MIL-STD-220 | | |
|---------|-----------|------|--------|--------------|-----------------------|------|---|---------|-------|
| | | 85°C | +125°C | | | | 10 MHZ | 100 MHZ | 1 GHZ |
| 1000 pF | GMV | 100 | 100 | 300 VDC | 10 G Ω | 10 A | 7 | 40 | 65 |

X-2015 Rev-0

| | | |
|-----------------|---|---|
| REVISION RECORD | 0 | Original Release C.O. |
| | 8 | DELETED ITEMS 000, 001, 002 & 007. S.M. 01-16-97 |
| | 9 | 970109-3 DIM. .085 ±.005 WAS .083 ±.004. S.M. 07-1598 |
| | 10 | 19980715-8-03 ITEM 009 & ORIENTATION SYMBOL ADDED L.E. 06-18-01 |
| | 11 | 20010618-5-01 DIM .090 WAS .085. REVISED MOUNTING PAT. ADDED ITEMS FROM 4700-050. S.M. 09-19-01 |
| 12 | 20010918-3-01 REVISED DWG. DRAWING MADE FOR EACH VAR. S.M. 02-13-03 | |
| 13 | 20030213-1-02 REVISED DRAWING. S.M. 06-20-03 | |
| 14 | 20030619-2-02 REVISED NOTES. S.M. 06-20-03 | |
| 14 | 20050916-1-02 | |

| | | |
|---|---|-----------------|
| --TOLERANCES-- Unless Otherwise Specified DECIMAL ± .005 [0.13] | Title SURFACE MOUNT SQUARE STYLE PI FILTER | |
| ANGLES ± | Drawn FG 9-9-94 | Scale 7 X |
| TUSONIX TUCSON, ARIZONA | Approved NV 9-9-94 | |
| | A | 4700-005 |