

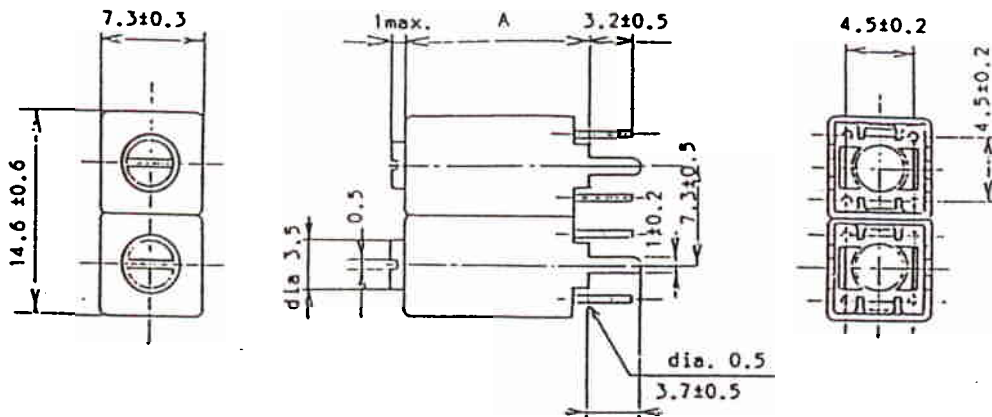
Customer & part number:
 Toko sample number : 252MXPR-2767A

TK3303

Dimensions.

	A(max)
252HA	14.6
252MXPR	13.3
252IN	13.3
252LN	11.4

(Unit in m/m)

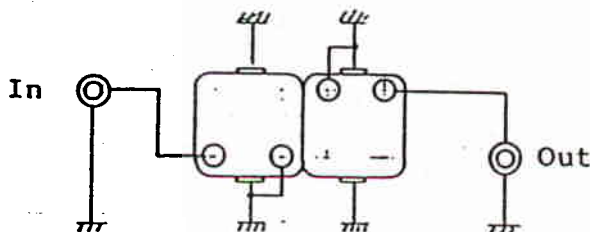


Electrical characteristics.

Center frequency (Fo) : 453MHz
~~Tuning range~~ - ~~Fo ±~~
 - 1 db bandwidth at Fo : 11.5MHz min.
 Insertion loss at Fo : 2.5dB max.
 Selectivity Fo + 30 Mhz : 7.0dB min.
 Fo - 30 Mhz : 10dB min.
 Ripple in pass band : 1.5dB max.
 Input impedance : 50-ohms
 Output impedance : 50-ohms

Connection.

(Bottom view)



Remarks.

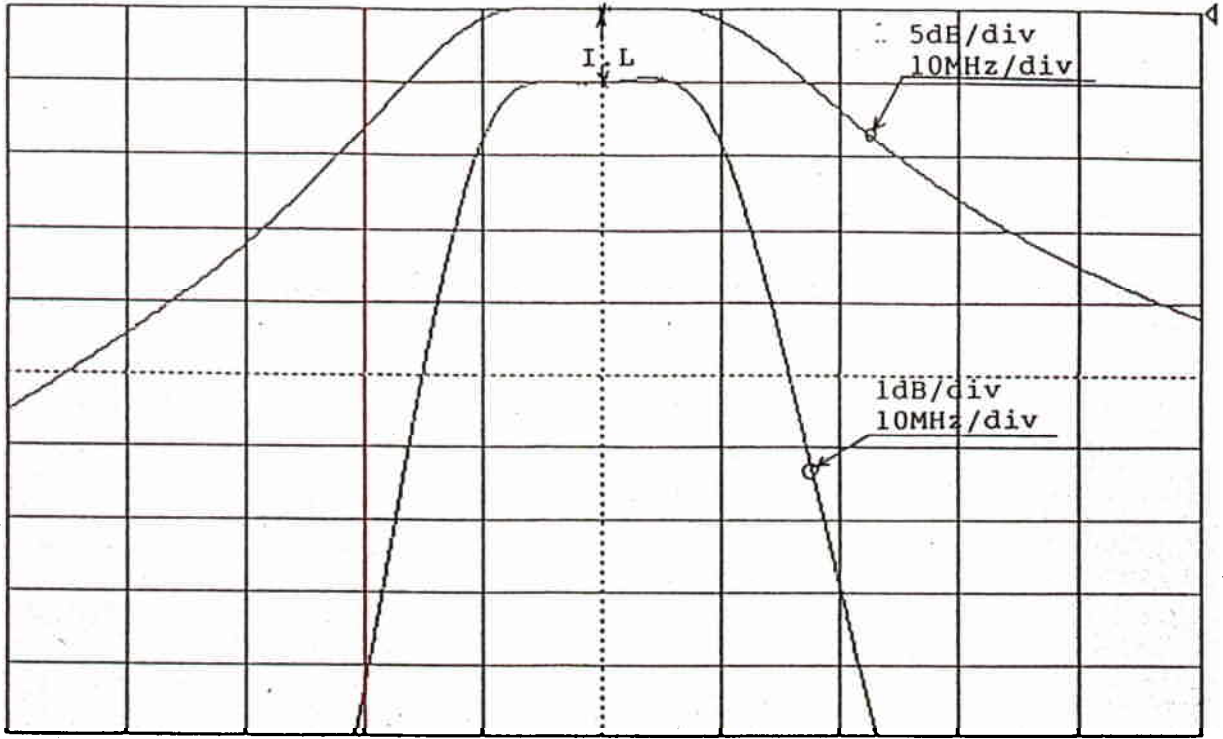
1. Please return one copy with your signature when samples are approved under the above specification.

*Modified from 252MX-1550A

Date	Approved by	Made by	
Oct. 31, '89	<i>K. Yamashita</i> K. Yamashita	<i>H. Ohtsuka</i> H. Ohtsuka	Toko Inc 1-17, 2-Chome, Higashi-Yukigaya, Ohta-ku Tokyo. Fax. 03-728-4697

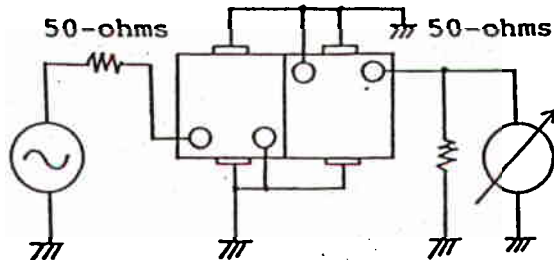
MKR(251):453 MHz
A(*):MAGTD -1.02dB
B(*):B -1.03dB

5dB/ 1dB/
-1.02dB 0.00dB



CF:453MHz SPAN:100MHz
 OUT(B):0.00dBm ST:3.00sec EL:0.00cm
 IRG(R):0dBm IRG(T):0dBm RBW:10kHz VBW:10kHz 50Ω
 MAGTD OFFSET TOP

Connections.



(Bottom view)