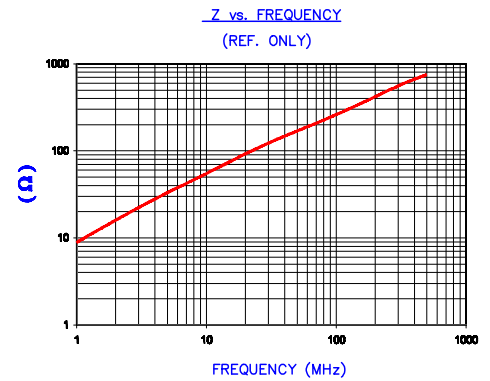


DETAIL A
SCALE: 8:1

UNCONTROLLED DOCUMENT

IMPEDANCE (Z)			
Frequency	25 MHz	100 MHz	300 MHz
Nominal (REF)	110 Ω	260 Ω	555 Ω
Minimum	- Ω	208 Ω	- Ω



AGILENT E4981A Impedance/Material Analyzer
HP 16062A Test Fixture, REF 2979

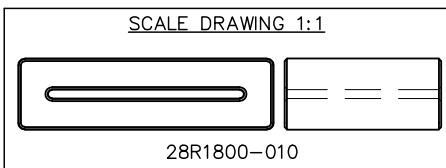
FERRITE CORE DIMENSIONS (SPEC):mm[Inches]

A	45.72 [1.800]	±	1.02 [.040]
B	35.05 [1.380]	±	0.76 [.030]
C	27.94 [1.100]	±	0.89 [.035]
D	12.70 [.500]	±	0.64 [.025]
E	1.52 [.060]		+ 0.64 [.025] - 0.00 [.000]

WEIGHT/1000 72.62 kgs [160.09 Lbs]

NOTES:

- USE SAME TOOLING AS 28R1775-000.



DIMENSIONS ARE IN mm [INCHES].				THIS DOCUMENT CONTAINS INFORMATION WHICH IS PROPRIETARY AND CONFIDENTIAL TO STEWARD. NO PRODUCTION OR PUBLICATION OF THIS DOCUMENT IN WHOLE OR IN PART SHALL BE MADE WITHOUT WRITTEN AUTHORIZATION FROM STEWARD.			
E	UPDATE MIN Z SPECS & COMPANY LOGO	07/27/07	TMB				
D	UPDATE MIN Z SPEC @100 Mhz REF 2979 UPDATE PART WEIGHT & SCALE OF DETAIL "A"	02/13/04	JRK				
C	UPDATE PRINT FORMAT & Z SPECS ADD Z CURVE	02/27/03	JRK				
B	ADDED NOTE # 1	08/17/99	BAC				
A	ORIGINAL DRAFT	12/01/97	BAC				
REV	DESCRIPTION	DATE	INT	PROJECT/PART NUMBER: 28R1800-010	REV E	PART TYPE: CNZ RIBBON CORE	DRAWN BY: BAC
				DATE: 12/01/97	SCALE: 1.5:1	MATERIAL: Ni Zn FERRITE	
				CAD # 28R1800-010-E	TOOL # R1775		