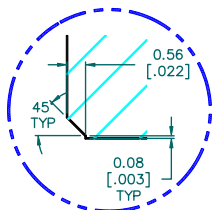


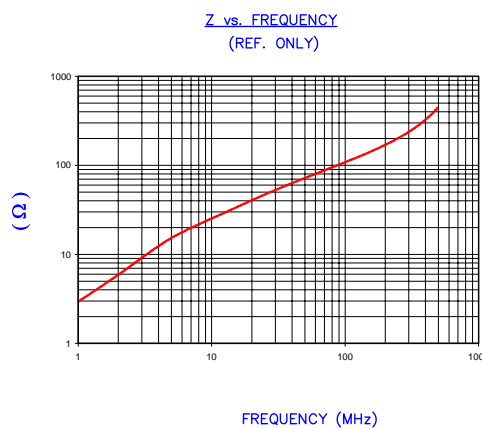
SEE DETAIL "A"
SECTION A-A



DETAIL "A"
CHAMFER
SCALE=4:1

UNCONTROLLED
DOCUMENT

IMPEDANCE (Z)			
Frequency	25 MHz	100 MHz	300 MHz
Nominal (REF)	46 Ω	110 Ω	240 Ω
Minimum	- Ω	88 Ω	- Ω

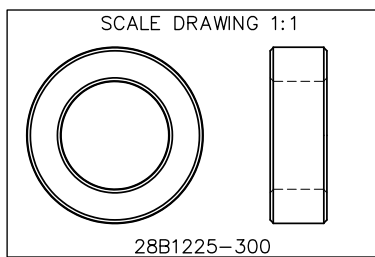


AGILENT E4991A Impedance/Material Analyzer
HP 16092A Test Fixture

FERRITE CORE DIMENSIONS (SPEC): mm/inches

A	31.12 [1.225]	±	0.61 [.024]
B	19.05 [.750]	±	0.41 [.016]
C	10.00 [.394]	±	0.30 [.012]

WEIGHT/1000 23.25 kgs [51.26Lbs]



DIMENSIONS ARE IN mm [INCHES].				THIS DOCUMENT CONTAINS INFORMATION WHICH IS PROPRIETARY AND CONFIDENTIAL TO STEWARD. NO PRODUCTION OR PUBLICATION OF THIS DOCUMENT IN WHOLE OR IN PART SHALL BE MADE WITHOUT WRITTEN AUTHORIZATION FROM STEWARD.			
				Steward			
				PROJECT/PART NUMBER:	REV	PART TYPE:	DRAWN BY:
				28B1225-300	C	FERRITE CORE	JRK
C	UPDATE FORMAT & Z SPECS AND CURVE	07/22/03	JRK	DATE:	04/26/02	SCALE:	1 : 1
B	UPDATE FORMAT, ADD NOTE # 1 UPDATE Z SPECS	05/09/02	JRK	CAD #	28B1225-300-C	TOOL #	B1225
A	ORIGINAL DRAFT	04/26/02	JRK	MATERIAL: STEWARD 28			
REV	DESCRIPTION	DATE	INT				