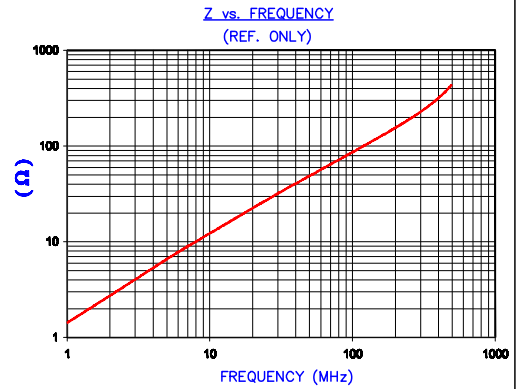


DETAIL A
SCALE 4:1

**UNCONTROLLED
DOCUMENT**

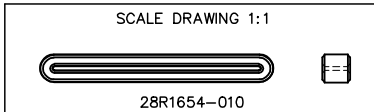
IMPEDANCE (Z)			
Frequency	25 MHz	100 MHz	300 MHz
Nominal (REF)	27 Ω	84 Ω	200 Ω
Minimum	- Ω	67 Ω	- Ω



FERRITE CORE DIMENSIONS (SPEC): mm[Inches]

A	42.00 [1.654]	+	0.76 [.030]
B	37.50 [1.476]	+	0.76 [.030]
C	5.00 [.197]	+	0.20 [.008]
D	5.00 [.197]	+	0.36 [.014]
E	0.70 [.028]	+	0.20 [.008]

WEIGHT/1000 4.21 kgs [9.28 Lbs]



DIMENSIONS ARE IN mm[INCHES].				THIS DOCUMENT CONTAINS INFORMATION WHICH IS PROPRIETARY AND CONFIDENTIAL TO STEWARD. NO PRODUCTION OR PUBLICATION OF THIS DOCUMENT IN WHOLE OR IN PART SHALL BE MADE WITHOUT WRITTEN AUTHORIZATION FROM STEWARD.			
G	UPDATE MIN Z SPECS & COMPANY LOGO	07/27/07	TMB				
F	UPDATE MIN Z SPEC @100MHz ADD REF #	02/10/04	JRK				
E	UPDATE PRINT FORMAT, UPDATE Z SPECS	02/26/03	JRK				
D	NEW CNZ FORMAT, ADD Z CURVE UPDATE Z SPECS	08/14/02	JRK	PROJECT/PART NUMBER:	REV	PART TYPE:	DRAWN BY:
C	UPDATE PRINT FOR ELECTRONIC DATABASE	12/13/00	JAJ	28R1654-010	G	FERRITE RIBBON CORE	JBE
B	UPDATED P/N	08/19/96	BAC	DATE:	SCALE:	MATERIAL:	
A	ORIGINAL DRAFT	10/11/95	JBE	10/11/95	2 : 1	Ni Zn FERRITE	
REV	DESCRIPTION	DATE	INT	CAD #	TOOL #		
				28R1654-010-G	R1654		