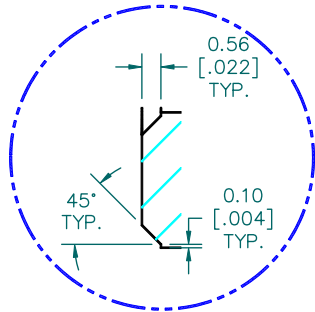
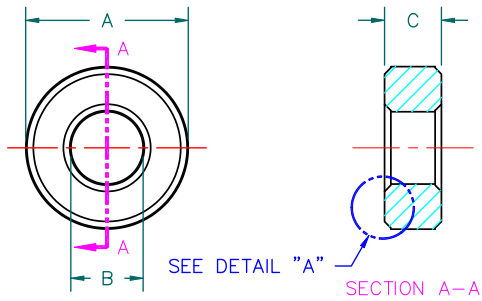
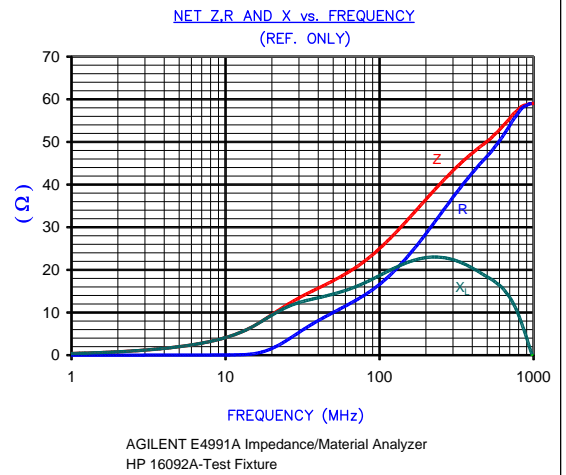


UNCONTROLLED DOCUMENT



CHAMFER
DETAIL "A"
SCALE= 6:1

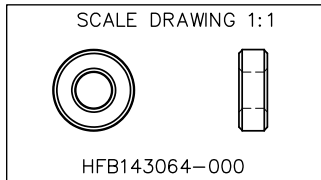
NET IMPEDANCE (Z)			
Frequency	300 MHz	500 MHz	1 GHz
Nominal (REF)	43 Ω	50 Ω	60 Ω
Minimum	- Ω	40 Ω	- Ω



FERRITE CORE DIMENSIONS (SPEC) MM [Inches]:

A	14.27 [.562]	±	0.29 [.011]
B	6.35 [.250]	±	0.13 [.005]
C	5.00 [.197]	±	0.10 [.004]

WEIGHT/1000 3.04 kgs [6.70 Lbs]



DIMENSIONS ARE IN mm [INCHES].				THIS DOCUMENT CONTAINS INFORMATION WHICH IS PROPRIETARY AND CONFIDENTIAL TO STEWARD. NO PRODUCTION OR PUBLICATION OF THIS DOCUMENT IN WHOLE OR IN PART SHALL BE MADE WITHOUT WRITTEN AUTHORIZATION FROM STEWARD.			
				Steward			
				PROJECT/PART NUMBER:	REV	PART TYPE:	DRAWN BY:
				HFB143064-000	B	FERRITE CORE	TMB
B	UPDATE FORMAT CHG CURVE & Z SPECS	04/03/03	TMB	DATE:	08/20/02	SCALE:	2 : 1
A	ORIGINAL DRAFT	08/20/02	TMB	CAD #	HFB143064-000-B	TOOL #	B0562
REV	DESCRIPTION	DATE	INT	MATERIAL: HF			