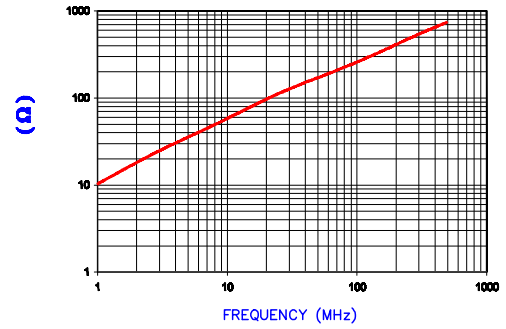


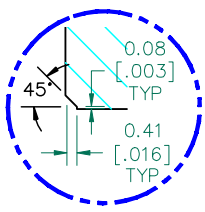
| IMPEDANCE (Z) | | | |
|-----------------|--------|---------|---------|
| Frequency | 25 MHz | 100 MHz | 300 MHz |
| Nominal (REF) | 115 Ω | 260 Ω | 530 Ω |
| Minimum | - Ω | 208 Ω | - Ω |

Z vs. FREQUENCY
(REF. ONLY)



AGILENT E4991A Impedance/Material Analyzer
HP 16092A Test Fixture REF #2276

UNCONTROLLED DOCUMENT

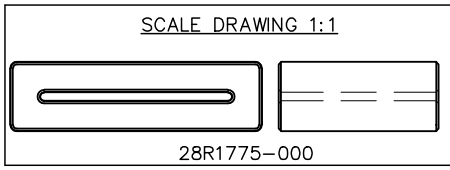


DETAIL A
SCALE: 5:1

FERRITE CORE DIMENSIONS (SPEC):mm[Inches]

| | | | |
|---|---------------|---|-------------|
| A | 45.08 [1.775] | ± | 0.89 [.035] |
| B | 34.42 [1.355] | ± | 0.64 [.025] |
| C | 28.58 [1.125] | ± | 0.64 [.025] |
| D | 12.45 [.490] | ± | 0.51 [.020] |
| E | 1.52 [.060] | ± | 0.51 [.020] |

WEIGHT/1000 71.54 kgs [157.71 Lbs]



| DIMENSIONS ARE IN mm [INCHES]. | | | | THIS DOCUMENT CONTAINS INFORMATION WHICH IS PROPRIETARY AND CONFIDENTIAL TO STEWARD. NO PRODUCTION OR PUBLICATION OF THIS DOCUMENT IN WHOLE OR IN PART SHALL BE MADE WITHOUT WRITTEN AUTHORIZATION FROM STEWARD. | | | | | | | |
|----------------------------------|--|----------|-----|--|--|--|--|--------------|--------------------------------|---------------|--|
| G | UPDATE MIN Z SPECS & COMPANY LOGO | 07/27/07 | TMB | | | | | | | | |
| F | UPDATE MIN Z SPEC @100Mhz ADD REF # | 02/10/04 | JRK | | | | | | | | |
| E | CHANGE CHAMFER FLAT FROM 009 UPDATE FORMAT & Z SPECS | 02/27/03 | JRK | | | | | | | | |
| D | UPDATE TO CNZ FORMAT ADD Z CURVE | 07/08/02 | JRK | | | | | | | | |
| C | UPDATE PRINT FORMAT ADD DETAIL A | 02/26/02 | JRK | | | | | | | | |
| B | UPDATED P/N FOR NEW CATALOG | 09/26/95 | JBE | | | | | | | | |
| A | ORIGINAL DRAFT | 09/30/92 | LNK | | | | | | | | |
| REV | DESCRIPTION | DATE | INT | | | | | | | | |
| PROJECT/PART NUMBER: 28R1775-000 | | | | | | | | REV: G | PART TYPE: FERRITE RIBBON CORE | DRAWN BY: LNK | |
| DATE: 09/30/92 | | | | | | | | SCALE: 1.5:1 | MATERIAL: NiZn FERRITE | | |
| CAD # 28R1775-000-G | | | | TOOL # R1775 | | | | | | | |