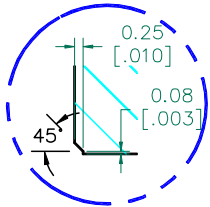


SEE
DETAIL "A"
SECTION A-A

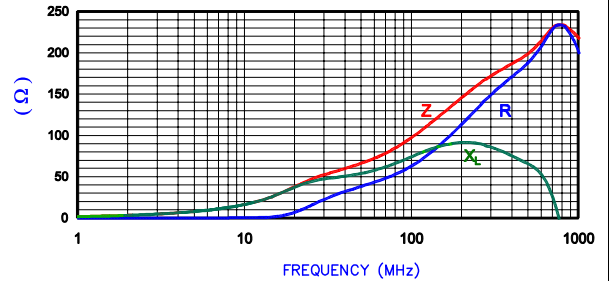


DETAIL "A"
SCALE: 6:1

UNCONTROLLED
DOCUMENT

NET IMPEDANCE (Z)			
Frequency	300 MHz	500 MHz	1 GHz
Nominal (REF)	170 Ω	198 Ω	220 Ω
Minimum	- Ω	184 Ω	- Ω

NET Z, R AND X vs. FREQUENCY
(REF. ONLY)

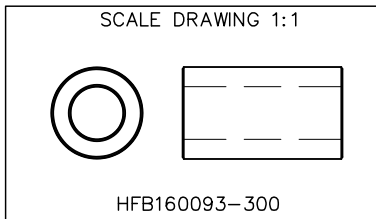


AGILENT E4991A Impedance/Material Analyzer
HP 16092A-Test Fixture REF #4101

FERRITE CORE DIMENSIONS (SPEC):

A	16.00 [.630]	±	0.30 [.012]
B	9.25 [.364]	±	0.20 [.008]
C	27.99 [1.102]	±	0.76 [.030]

WEIGHT/1000 18.54 kgs [40.89 Lbs]



DIMENSIONS ARE IN mm [INCHES].				THIS DOCUMENT CONTAINS INFORMATION WHICH IS PROPRIETARY AND CONFIDENTIAL TO STEWARD. NO PRODUCTION OR PUBLICATION OF THIS DOCUMENT IN WHOLE OR IN PART SHALL BE MADE WITHOUT WRITTEN AUTHORIZATION FROM STEWARD.			
				Steward			
				PROJECT/PART NUMBER:	REV	PART TYPE:	DRAWN BY:
				HFB160093-300	A	FERRITE CORE	JRK
				DATE:	SCALE:	MATERIAL:	
				05/17/04	2:1	HF	
A	ORIGINAL DRAFT	05/17/04	JRK	CAD #	TOOL #		
REV	DESCRIPTION	DATE	INT	HFB160093-300-A	B0631		