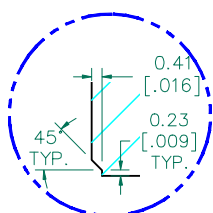
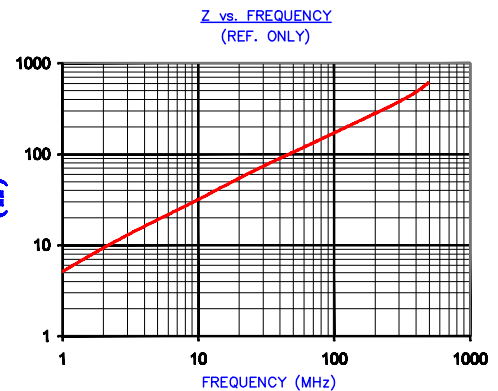


IMPEDANCE (Z)			
Frequency	25 MHz	100 MHz	300 MHz
Nominal (REF)	65 Ω	170 Ω	375 Ω
Minimum	- Ω	136 Ω	- Ω



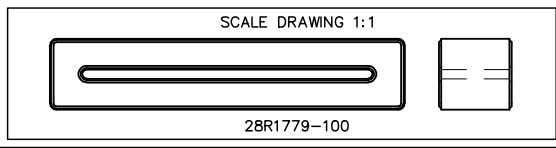
DETAIL "A"  
CHAMFER  
SCALE=4.5: 1

**UNCONTROLLED DOCUMENT**

FERRITE CORE DIMENSIONS (SPEC): mm [in]

A	63.50 [2.500]	±	1.27 [.050]
B	52.07 [2.050]	±	1.02 [.040]
C	12.98 [.511]	±	0.38 [.015]
D	12.70 [.500]	±	0.51 [.020]
E	1.68 [.066]	±	0.51 [.020]

WEIGHT/1000 45.72 kgs [100.80 Lbs]



DIMENSIONS ARE IN mm[INCHES]			
K	UPDATE MIN Z SPECS & COMPANY LOGO	07/27/07	TMB
J	UPDATE MIN Z SPEC ADD TEST REF#	11/18/04	JRK
H	CHANGE PRINT FORMAT CHANGE Z SPECS REMOVE NOTE 1	05/19/03	TMB
G	CHANGE Kgs FROM 101.20 Kgs TO 45.72 Kgs	09/24/02	TMB
F	ADD ZRX CURVE TO PRINT REVISE PART LAYOUT FORMAT REVISE ELECTRICAL TESTING FORMAT, NOTES, AND WEIGHT/1000 kgs [Lbs]	09/10/02	TMB
E	REM MAX FROM IMPEDANCE CHECKED IMPEDANCE VALUES (J.HOLT)	02/01/02	JRK
REV	DESCRIPTION	DATE	INT

THIS DOCUMENT CONTAINS INFORMATION WHICH IS PROPRIETARY AND CONFIDENTIAL TO STEWARD. NO PRODUCTION OR PUBLICATION OF THIS DOCUMENT IN WHOLE OR IN PART SHALL BE MADE WITHOUT WRITTEN AUTHORIZATION FROM STEWARD.



PROJECT/PART NUMBER: <b>28R1779-100</b>	REV <b>K</b>	PART TYPE: FERRITE RIBBON CORE	DRAWN BY: LNK
DATE: 02/24/93	SCALE: 1.5 : 1	MATERIAL: NiZn Ferrite	
CAD # 28R1779-100-K	TOOL # R1779		