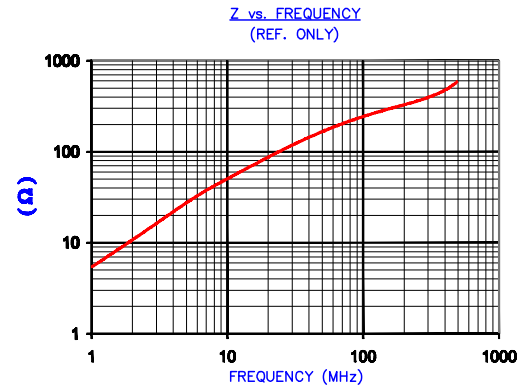


**CORE DIMENSIONS:**

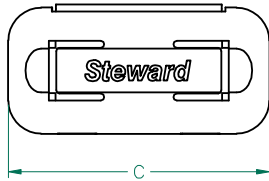
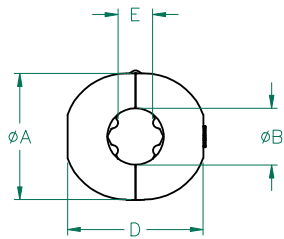
A	16.25 [.640]	+	0.25 [.010]
B	9.02 [.355]	+	0.20 [.008]
		-	0.13 [.005]
C	27.94 [1.100]	+	0.38 [.015]
D	8.12 [.320]	+	0.13 [.005]

**UNCONTROLLED DOCUMENT**

IMPEDANCE (Z)			
Frequency	25 MHz	100 MHz	300 MHz
Nominal (REF)	105 Ω	240 Ω	390 Ω
Minimum	- Ω	192 Ω	- Ω



AGILENT E4991A Impedance/Material Analyzer  
HP 16082A-Test Fixture REF 3168



**NOTES:**

1. ASSEMBLED PART #: 28A0640-0A0
2. CASE COLOR: WHITE-0A0.

**CASE DIMENSIONS:**

A	20.07 [.790]	+	REF.
B	9.07 [.357]	+	REF.
C	41.55 [1.636]	+	REF.
D	21.57 [.849]	+	REF.
E	5.74 [.226]	+	REF.

DIMENSIONS ARE IN mm [INCHES].				THIS DOCUMENT CONTAINS INFORMATION WHICH IS PROPRIETARY AND CONFIDENTIAL TO STEWARD. NO PRODUCTION OR PUBLICATION OF THIS DOCUMENT IN WHOLE OR IN PART SHALL BE MADE WITHOUT WRITTEN AUTHORIZATION FROM STEWARD.			
M	UPDATE CASE DIMENSIONS TO MATCH CASE PRINT	08/23/07	TMB				
L	UPDATE 100 MHz MINIMUM VALUE	06/11/07	TMB				
K	UPDATE COMPANY LOGO	04/17/07	TMB				
J	UPDATE Z SPEC 100MHz MIN VALUE	12/11/06	TMB				
H	UPDATE CORE PROFILE FOR UPDATED CASE DESIGN CHANGE CASE TOLERANCES TO REF. UPDATE CASE DIMS ON CASE & ADD E DIM TO CASE REMOVE CORE & CASE P/N REFERENCE REVISE NOTES	11/07/06	TMB	PROJECT/PART NUMBER: <b>28A0640-0A0</b>	REV <b>M</b>	PART TYPE: <b>FERRITE SNAP-ON</b>	DRAWN BY: <b>BAC</b>
REV	DESCRIPTION	DATE	INT	DATE: 07/12/96	SCALE: NTS	MATERIAL: <b>NiZn Ferrite</b>	
				CAD # 28A0640-0A0-M	TOOL # -		