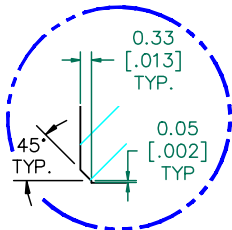


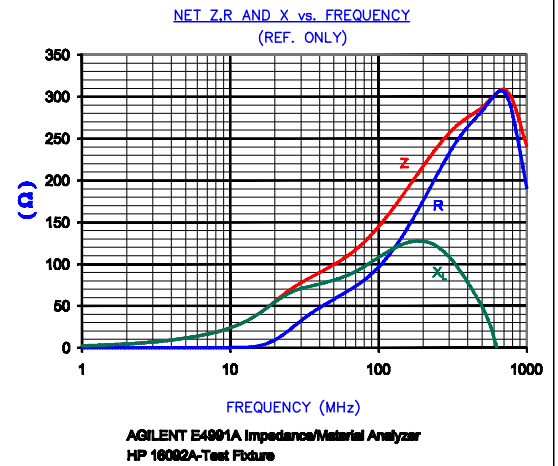
SEE DETAIL "A"



DETAIL "A"
CHAMFER
SCALE=6:1

UNCONTROLLED DOCUMENT
OBSOLETE

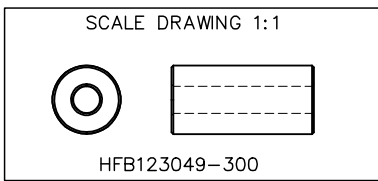
| NET IMPEDANCE (Z) | | | |
|-------------------|---------|---------|-------|
| Frequency | 300 MHz | 500 MHz | 1 GHz |
| Nominal (REF) | 258 Ω | 287 Ω | 246 Ω |
| Minimum | - Ω | 230 Ω | - Ω |



FERRITE CORE DIMENSIONS (SPEC) MM [Inches]:

| | | | |
|---|---------------|---|-------------|
| A | 12.32 [.485] | + | 0.25 [.010] |
| B | 4.88 [.192] | + | 0.15 [.006] |
| C | 25.40 [1.000] | + | 0.60 [.024] |

WEIGHT/1000 12.60 kgs [27.78 Lbs]



| DIMENSIONS ARE IN mm [INCHES]. | | | | THIS DOCUMENT CONTAINS INFORMATION WHICH IS PROPRIETARY AND CONFIDENTIAL TO STEWARD. NO PRODUCTION OR PUBLICATION OF THIS DOCUMENT IN WHOLE OR IN PART SHALL BE MADE WITHOUT WRITTEN AUTHORIZATION FROM STEWARD. | | | |
|--------------------------------|----------------|----------|-----|--|--------|--------------|-----------|
| | | | | Steward | | | |
| | | | | PROJECT/PART NUMBER: | REV | PART TYPE: | DRAWN BY: |
| | | | | HFB123049-300 | A | FERRITE CORE | TMB |
| | | | | DATE: | SCALE: | MATERIAL: | |
| | | | | 04/10/03 | 3:1 | HF | |
| REV | DESCRIPTION | DATE | INT | CAD # | TOOL # | | |
| A | ORIGINAL DRAFT | 04/10/03 | TMB | HF123049-300-A | B0485 | | |