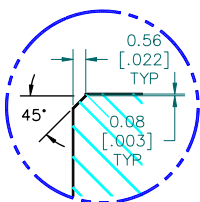
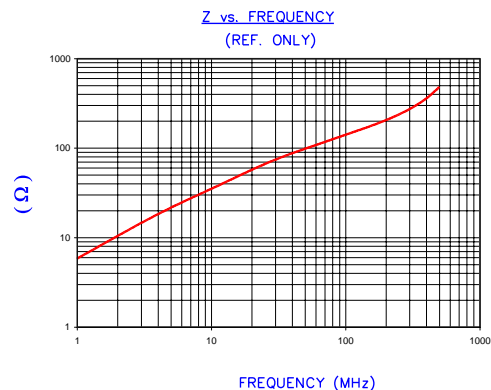


SECTION A-A

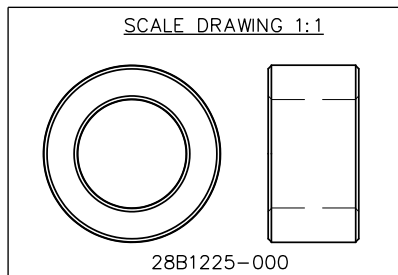


DETAIL "A"  
SCALE: 4:1

IMPEDANCE (Z)			
Frequency	25 MHz	100 MHz	300 MHz
Nominal (REF)	68 Ω	140 Ω	270 Ω
Minimum	- Ω	112 Ω	- Ω



AGILENT E4991A Impedance/Material Analyzer  
HP 16092A Test Fixture



**UNCONTROLLED DOCUMENT**

FERRITE CORE DIMENSIONS (SPEC): mm/inches

A	31.12 [1.225]	±	0.61 [.024]
B	19.05 [.750]	±	0.40 [.016]
C	15.93 [.627]	±	0.40 [.016]

WEIGHT/1000 37.16 kgs 81.93 Lbs.

DIMENSIONS ARE IN mm (INCHES).				THIS DOCUMENT CONTAINS INFORMATION WHICH IS PROPRIETARY AND CONFIDENTIAL TO STEWARD. NO PRODUCTION OR PUBLICATION OF THIS DOCUMENT IN WHOLE OR IN PART SHALL BE MADE WITHOUT WRITTEN AUTHORIZATION FROM STEWARD.			
H	CHANGE P/N REMOVE COATING SPECS	08/15/03	JRK	<p style="text-align: center; font-size: 2em; font-weight: bold; color: red;">Steward</p>			
G	UPDATE FORMAT, Z SPECS, ADD CURVE CHG P/N WAS 000 ADD COATING SPECS	07/22/03	JRK				
F	CHG P/N WAS 00* REM COATINGS ADD DETAIL A	07/31/02	JRK				
E	CHG P/N FROM -000 ADD COATING SPECS	03/24/99	IS				
D	UPDATED P/N FOR NEW CATALOG	09/25/95	JBE				
C	ADDED NOTE TO COVER SHEET	12/08/93	JAZ	PROJECT/PART NUMBER:	REV	PART TYPE:	DRAWN BY:
B	CHG THICKNESS, IMPED, WK/K	06/30/93	DJB	28B1225-000	H	FERRITE CORE	DJB
A	ORIGINAL DRAFT	05/21/93	DJB	DATE:	SCALE:	SHEET:	
REV	DESCRIPTION	DATE	INT	05/21/93	1.5 : 1		
				CAD #	TOOL #	SHEET: 28	
				28B1225-000-H	B1225	STEWARD 28	