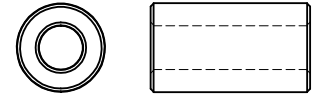
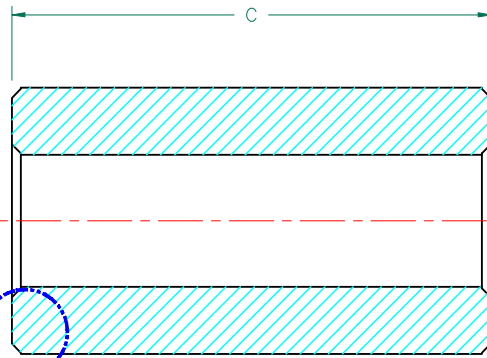
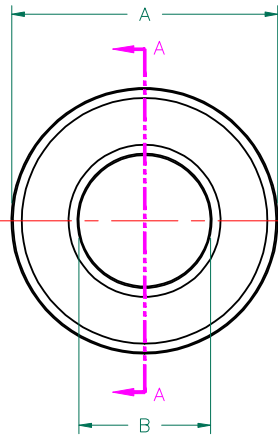


SCALE DRAWING 1:1



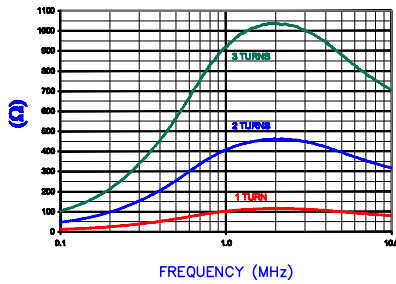
LFB159079-000



SEE DETAIL "A"

SECTION A-A

Z vs. FREQUENCY
1 TURN, 2, AND 3 TURNS
(REF. ONLY)



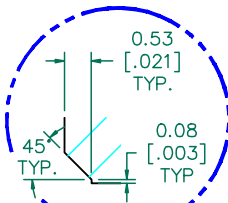
IMPEDANCE (Z) NET^{SEE NOTE 1}

FREQUENCY	500 KHz	1 MHz	5 MHz
NOMINAL (REF.) 1 TURN	61 Ω	105 Ω	100 Ω
MINIMUM (SPEC.) 1 TURN	- Ω	84 Ω	- Ω
NOMINAL (REF.) 2 TURNS	250 Ω	410 Ω	390 Ω
NOMINAL (REF.) 3 TURNS	570 Ω	920 Ω	880 Ω

TEST CRITERIA

METER HP4396A OR EQUIVALENT
 FIXTURE HP16092A OR EQUIVALENT

UNCONTROLLED DOCUMENT



DETAIL "A"
CHAMFER
SCALE=9:1

AGILENT E4991A RF Impedance/Material Analyzer
HP 16092A Test Fixture REF 2715

NOTES:

1. NET IMPEDANCE IS IMPEDANCE OF THE FERRITE CORE ONLY. ALL IMPEDANCE CONTRIBUTION FROM TEST WIRE AND FIXTURES HAS BEEN REMOVED.

FERRITE CORE DIMENSIONS (SPEC):

A	15.88 [.625]	±	0.38 [.015]
B	7.87 [.310]	±	0.38 [.015]
C	28.58 [1.125]	±	0.51 [.020]

WEIGHT/1000 20.13 kgs [44.37 Lbs]

DIMENSIONS ARE IN mm [INCHES].

This print is the property of Laird Tech. and is loaned in confidence subject to return upon request and with the understanding that no copies shall be made without the written consent of Laird Tech. All rights to design or invention are reserved.



REV	DESCRIPTION	DATE	INT	PROJECT/PART NUMBER:	REV	PART TYPE:	DRAWN BY:
D	UPDATE COMPANY LOGO	07/13/08	TMB	LFB159079-000	D	FERRITE CORE	TMB
C	REMOVE MIN SPEC @ 500 KHz	02/10/06	TMB				
B	ADJUST TOLERANCES ADD TEST REF#	12/27/04	JRK				
A	ORIGINAL DRAFT	10/01/02	TMB				
DATE: 10/01/02				SCALE: 3:1	MATERIAL: LF		
CAD # LFB159079-000-D				TOOL # B0625			