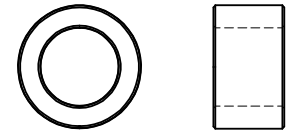


UNCONTROLLED DOCUMENT

SCALE DRAWING 1:1



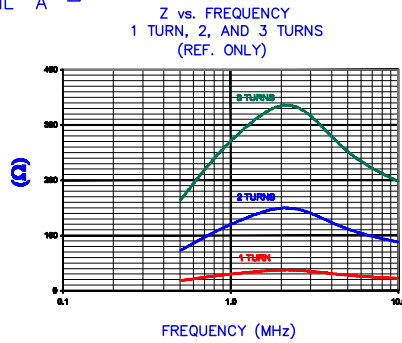
LFB220140-000

IMPEDANCE (Z) NET ^{SEE NOTE 1}

FREQUENCY	500 KHz	1 MHz	5 MHz
NOMINAL (REF.) 1 TURN	18 Ω	30 Ω	28 Ω
MINIMUM (SPEC.) 1 TURN	- Ω	24 Ω	- Ω
NOMINAL (REF.) 2 TURNS	72 Ω	120 Ω	110 Ω
NOMINAL (REF.) 3 TURNS	163 Ω	270 Ω	250 Ω

TEST CRITERIA

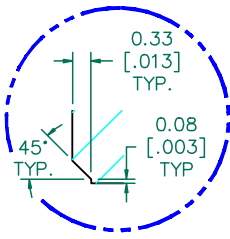
METER HP4396A OR EQUIVALENT
 FIXTURE HP16092A OR EQUIVALENT



AGILENT E4991A RF Impedance/Material Analyzer
 HP 16092A Test Fixture REF2694

SEE DETAIL "A"

SECTION A-A



DETAIL "A"
 CHAMFER
 SCALE=10:1

NOTES:

- NET IMPEDANCE IS IMPEDANCE OF THE FERRITE CORE ONLY. ALL IMPEDANCE CONTRIBUTION FROM TEST WIRE AND FIXTURES HAS BEEN REMOVED.

FERRITE CORE DIMENSIONS (SPEC):

A	22.10 [.870]	±	0.38 [.015]
B	14.00 [.551]	±	0.38 [.015]
C	12.70 [.500]	±	0.25 [.010]

WEIGHT/1000 13.77 kgs [30.36 Lbs]

DIMENSIONS ARE IN mm [INCHES].				This print is the property of Laird Tech. and is loaned in confidence subject to return upon request and with the understanding that no copies shall be made without the written consent of Laird Tech. All rights to design or invention are reserved.	
D	UPDATE COMPANY LOGO	07/13/08	TMB	PROJECT/PART NUMBER:	LFB220140-000
C	CHG IMPEDANCE SPEC REMOVE MINIMUM SPEC AT 500KHz&5MHz	02/10/06	JRK	REV	D
B	REVISE TOLERANCES ADD TEST REF #	12/28/04	JRK	PART TYPE:	FERRITE CORE
A	ORIGINAL DRAFT	10/01/02	TMB	DATE:	10/01/02
REV	DESCRIPTION	DATE	INT	CAD #	LFB220140-000-D
				SCALE:	3:1
				TOOL #	B0870
				MATERIAL:	LF
				DRAWN BY:	TMB

