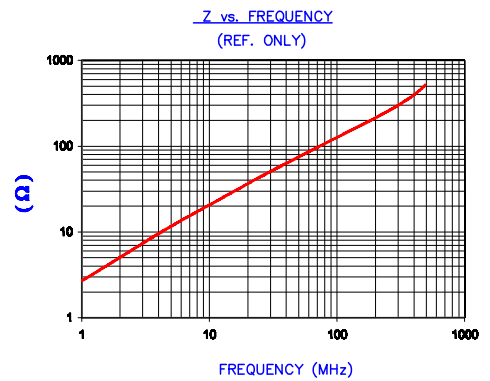


DETAIL "A"
SCALE: 8:1

UNCONTROLLED DOCUMENT

IMPEDANCE (Z)			
Frequency	25 MHz	100 MHz	300 MHz
Nominal (REF)	45 Ω	127 Ω	300 Ω
Minimum	- Ω	102 Ω	- Ω

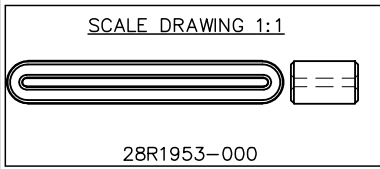


AGILENT E4981A Impedance/Material Analyzer
HP 16082A Test Fixture, REF #2980

FERRITE CORE DIMENSIONS (SPEC):mm[Inches]

A	49.61 [1.953]	±	1.02 [.040]
B	44.00 [1.732]	±	0.89 [.035]
C	12.00 [.472]	±	0.38 [.015]
D	7.62 [.300]		+ 0.76 [.030] - 0.30 [.012]
E	1.45 [.057]		+ 0.40 [.016] - 0.25 [.010]

WEIGHT/1000 17.52 kgs [38.63 Lbs]



DIMENSIONS ARE IN mm [INCHES].				THIS DOCUMENT CONTAINS INFORMATION WHICH IS PROPRIETARY AND CONFIDENTIAL TO STEWARD. NO PRODUCTION OR PUBLICATION OF THIS DOCUMENT IN WHOLE OR IN PART SHALL BE MADE WITHOUT WRITTEN AUTHORIZATION FROM STEWARD.					
M	UPDATE MIN Z SPECS & COMPANY LOGO	07/27/07	TMB	PROJECT/PART NUMBER: 28R1953-000		REV	M	PART TYPE: FERRITE RIBBON CORE	DRAWN BY: DJB
L	UPDATE MIN Z SPEC @100 Mhz ADD REF #	02/16/04	JRK			DATE:	10/31/91	SCALE:	2.5: 1
K	UPDATE FORMAT, CURVE AND Z SPECS	05/08/03	JRK	CAD #	28R1953-000-M	TOOL #	R1953		
J	UPDATE TO CNZ FORMAT, ADD Z CURVE	08/06/02	JRK						
H	UPDATED Z SPECS	10/31/91	DJB						
REV	DESCRIPTION	DATE	INT						

