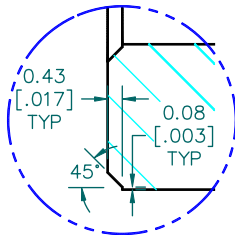


SECTION A-A

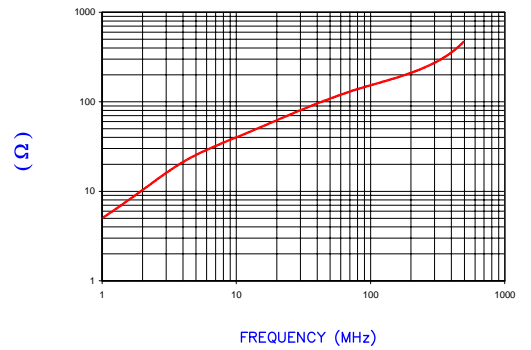


DETAIL "A"
SCALE 5:1

**UNCONTROLLED
DOCUMENT**

IMPEDANCE (Z)			
Frequency	25 MHz	100 MHz	300 MHz
Nominal (REF)	73 Ω	150 Ω	270 Ω
Minimum	- Ω	120 Ω	- Ω

Z vs. FREQUENCY
(REF. ONLY)

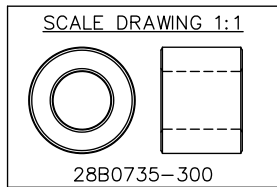


AGILENT E4991A Impedance/Material Analyzer
HP 16092A Test Fixture

CORE DIMENSIONS: mm[INCHES]

A	18.67 [.735]	±	0.36 [.014]
B	10.16 [.400]	±	0.20 [.008]
C	14.27 [.562]	±	0.25 [.010]

WEIGHT/1000 13.5 kgs 29.7 lbs



DIMENSIONS ARE IN MM [INCHES].				THIS DOCUMENT CONTAINS INFORMATION WHICH IS PROPRIETARY AND CONFIDENTIAL TO STEWARD. NO PRODUCTION OR PUBLICATION OF THIS DOCUMENT IN WHOLE OR IN PART SHALL BE MADE WITHOUT WRITTEN AUTHORIZATION FROM STEWARD.			
				Steward			
				PROJECT/PART NUMBER:	REV	DRAWN BY:	
				28B0735-300	C	JRK	
				DATE:	01/10/91	SCALE:	2 : 1
				MATERIAL:	STEWARD 28		
REV	DESCRIPTION	DATE	INT	CAD #	TOOL #		
C	UPDATE PRINT FORMAT ADD CURVE	06/12/03	JRK	28B0735-300-C	B0735		
B	UPDATED P/N FOR NEW CATALOG	10/30/95	JBE				
A	ORIGINAL DRAFT	1/10/91	DJB				