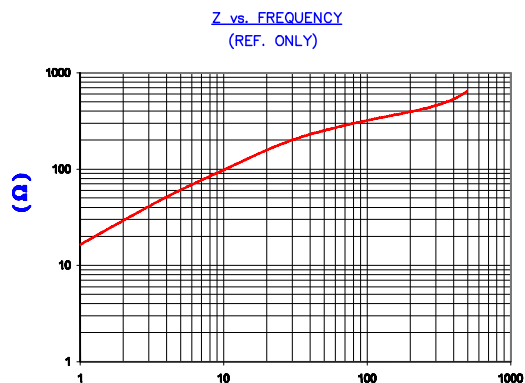


DETAIL "A"
SCALE: 6:1

UNCONTROLLED DOCUMENT

IMPEDANCE (Z)			
Frequency	25 MHz	100 MHz	300 MHz
Nominal (REF)	170 Ω	320 Ω	450 Ω
Minimum	- Ω	256 Ω	- Ω

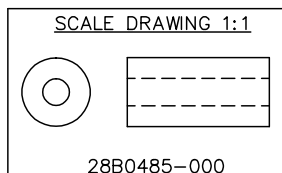


FREQUENCY (MHz)
AGILENT E4991A Impedance/Material Analyzer
HP 16082A Test Fixture

FERRITE CORE DIMENSIONS (SPEC):mm [Inches]

A	12.32 [.485]	+	0.20 [.008]
B	4.88 [.192]	+	0.13 [.005]
C	25.40 [1.000]	+	0.76 [.030]

WEIGHT/1000: 12.60 kgs 27.78 Lbs.



DIMENSIONS ARE IN INCHES (mm).				THIS DOCUMENT CONTAINS INFORMATION WHICH IS PROPRIETARY AND CONFIDENTIAL TO STEWARD. NO PRODUCTION OR PUBLICATION OF THIS DOCUMENT IN WHOLE OR IN PART SHALL BE MADE WITHOUT WRITTEN AUTHORIZATION FROM STEWARD.			
E	UPDATE MIN Z SPEC & UPDATE COMPANY LOGO	05/27/07	JRK				
D	UPDATE MIN Z SPEC @100 MHZ	10/03/06	JRK				
C	UPDATE PRINT FORMAT & Z SPECS ADD CURVE	03/04/03	JRK	PROJECT/PART NUMBER:	REV	PART TYPE:	DRAWN BY:
B	UPDATE FORMAT	03/15/99	I.S.	28B0485-000	E	FERRITE CORE	DJB
A	ORIGINAL DRAFT	09/20/90	DJB	DATE:	SCALE:	MATERIAL:	
REV	DESCRIPTION	DATE	INT	09/20/90	2:1	NiZn FERRITE	
				CAD #	TOOL #		
				28B0485-000-E	B0485		