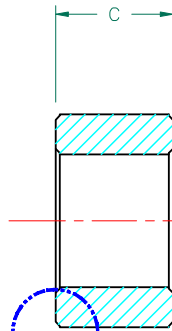
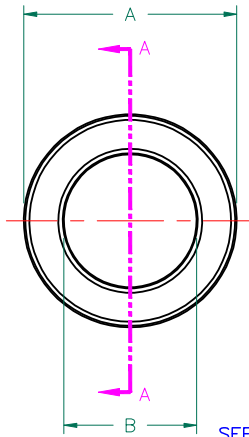


**UNCONTROLLED DOCUMENT**

SCALE DRAWING 1:1



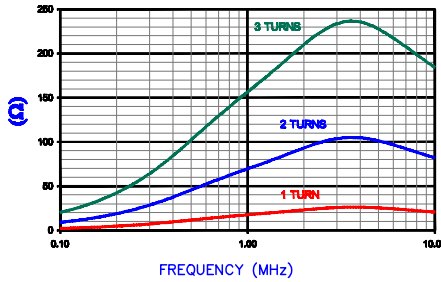
LFB127079-000



SEE DETAIL "A"

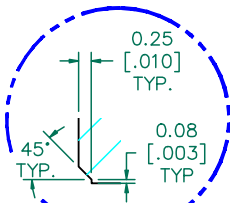
SECTION A-A

Z vs. FREQUENCY  
1 TURN, 2, AND 3 TURNS  
(REF. ONLY)



IMPEDANCE ( Z ) NET<sup>SEE NOTE 1</sup>

FREQUENCY	500 KHz	1 MHz	5 MHz
NOMINAL (REF.) 1 TURN	9 Ω	16 Ω	25 Ω
MINIMUM (SPEC.) 1 TURN	- Ω	12 Ω	- Ω
NOMINAL (REF.) 2 TURNS	45 Ω	70 Ω	102 Ω
NOMINAL (REF.) 3 TURNS	100 Ω	158 Ω	228 Ω



DETAIL "A"  
CHAMFER  
SCALE=9:1

TEST CRITERIA

METER HP4396A OR EQUIVALENT  
FIXTURE HP16092A OR EQUIVALENT

NOTES:

- NET IMPEDANCE IS IMPEDANCE OF THE FERRITE CORE ONLY. ALL IMPEDANCE CONTRIBUTION FROM TEST WIRE AND FIXTURES HAS BEEN REMOVED.

FERRITE CORE DIMENSIONS (SPEC):

A	12.70 [.500]	±	0.25 [.010]
B	7.92 [.312]	±	0.25 [.010]
C	7.00 [.276]	±	0.18 [.007]

WEIGHT/1000 2.65 kgs [5.84 Lbs]

DIMENSIONS ARE IN mm [INCHES].				This print is the property of Laird Tech. and is loaned in confidence subject to return upon request and with the understanding that no copies shall be made without the written consent of Laird Tech. All rights to design or invention are reserved.	
D	UPDATE COMPANY LOGO	07/13/08	TMB	PROJECT/PART NUMBER:	LFB127079-000
C	REMOVE MIN SPEC @ 500 KHz	02/10/06	TMB	REV	D
B	UPDATE TOLS. ON DIMENSIONS A,B&C ADD TEST REF TO CURVE	12/22/04	JRK	PART TYPE:	FERRITE CORE
A	ORIGINAL DRAFT	09/26/02	TMB	DATE:	09/26/02
REV	DESCRIPTION	DATE	INT	CAD #	LFB127079-000-D
				SCALE:	3:1
				TOOL #	B0500
				MATERIAL:	LF
				DRAWN BY:	TMB

