

28F0121-0SR-10



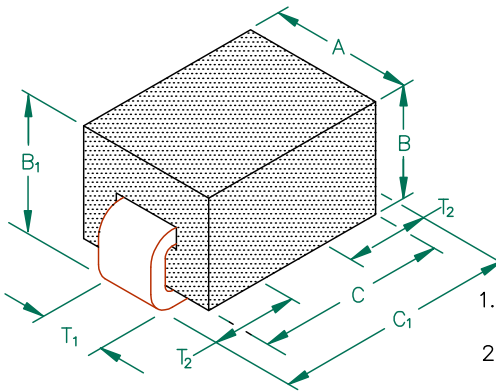
UNCONTROLLED DOCUMENT

PHYSICAL DIMENSIONS:

- A 3.05 [.120] \pm 0.08 [.003]
- B 2.54 [.100] \pm 0.08 [.003]
- B₁ 3.05 [.120] \pm MAX
- C 4.06 [.160] \pm 0.15 [.006]
- C₁ 5.08 [.200] \pm MAX

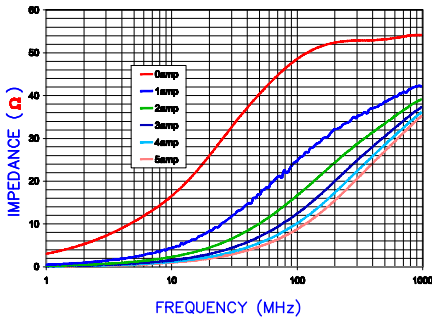
WIRE DIMENSIONS:

- T₁ 1.27 [.050] \pm 0.05 [.002]
- T₂ 1.52 [.060] \pm 0.51 [.020]

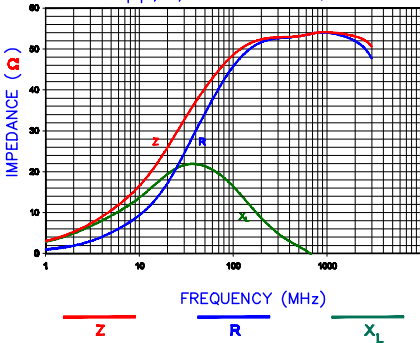


ELECTRICAL CHARACTERISTICS:			
Z @ 100MHz (Ω)	DCR (mΩ)	Rated Current	
Nominal	48		
Minimum	36		
Maximum	60	.00075	10,000 mA

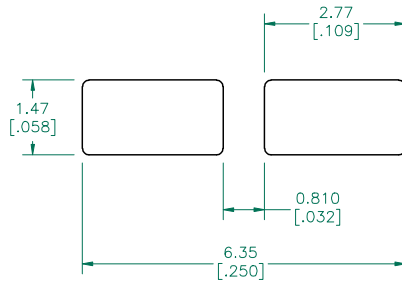
Z vs. FREQUENCY
IMPEDANCE UNDER DC BIAS



|Z|, R, AND X vs. FREQUENCY



LAND PATTERNS FOR REFLOW SOLDERING

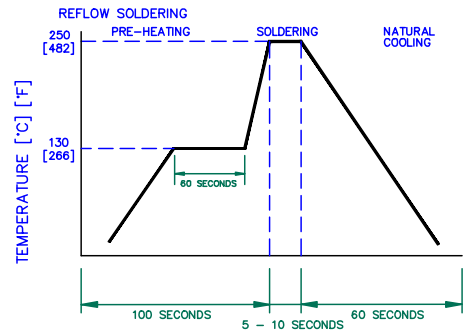


(For wave soldering, add 0.762 [.030] to this dimension.)

NOTES: UNLESS OTHERWISE SPECIFIED

- TAPED AND REELED per CURRENT EIA SPECIFICATIONS 13" REELS, 2500 PCS/REEL.
- COMPONENTS SHOULD BE ADEQUATELY PREHEATED BEFORE SOLDERING.
- REF. CARRIER TAPE SPECIFICATION # CART121-03.

RECOMMENDED SOLDERING CONDITIONS



DIMENSIONS ARE IN mm (INCHES).

F	UPDATE LANDPATTERN ADD ROHS SYMBOL	08/09/07	JRK
E	UPDATE COMPANY LOGO	04/19/07	JRK
D	CHANGE RATED CURRENT FROM 5000mA	02/17/04	JRK
C	ADD DC BIAS CURVE UPDATE ZRX CURVE & DCR VALUE	08/29/03	JRK
B	UPDATE REFLOW SOLDERING TEMPERATURE UPDATE NOTE # 5 ON SHT3	03/14/03	JRK
A	ORIGINAL DRAFT	11/13/02	JRK
REV	DESCRIPTION	DATE	INT

THIS DOCUMENT CONTAINS INFORMATION WHICH IS PROPRIETARY AND CONFIDENTIAL TO STEWARD. NO PRODUCTION OR PUBLICATION OF THIS DOCUMENT IN WHOLE OR IN PART SHALL BE MADE WITHOUT WRITTEN AUTHORIZATION FROM STEWARD.



PROJECT/PART NUMBER	REV	PART TYPE	DRAWN BY:
28F0121-0SR-10	F	ASSEMBLY	JRK
DATE: 11/13/02	SCALE: NTS	SHEET: 2 of 3	
DWG # 28F0121-0SR-10-2-F	TOOL # -		

