

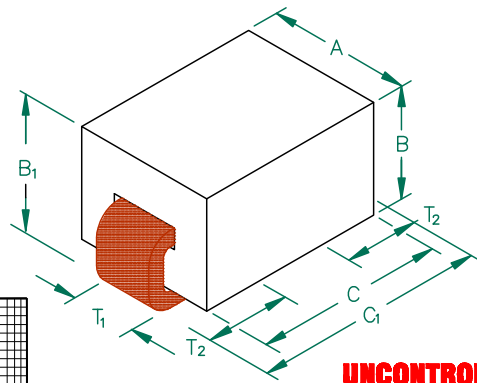
**PHYSICAL DIMENSIONS:**

A	3.05 [.120]	± 0.08 [.003]
B	2.54 [.100]	± 0.08 [.003]
B <sub>1</sub>	3.05 [.120]	± MAX
C	4.06 [.160]	± 0.10 [.004]
C <sub>1</sub>	5.08 [.200]	± MAX

**WIRE DIMENSIONS:**

T <sub>1</sub>	1.27 [.050]	± REF
T <sub>2</sub>	1.52 [.060]	± 0.51 [.020]

# 35F0121-0SR-10



**ELECTRICAL CHARACTERISTICS:**

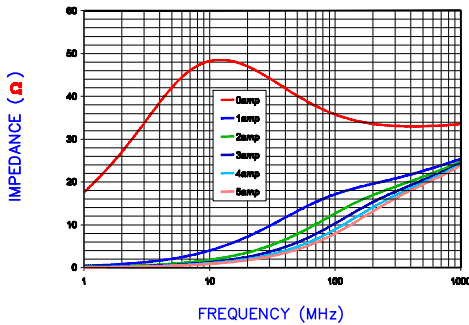
	Z (Ω) @		DCR (Ω)	Rated Current
	1MHz	10MHz		
Nominal	—	42		
Minimum	14	34		
Maximum	—	—	.00075	10,000 mA

NOTES: UNLESS OTHERWISE SPECIFIED

1. TAPED AND REELED per CURRENT EIA SPECIFICATIONS 13" REELS, 2500 PCS/REEL.
2. COMPONENTS SHOULD BE ADEQUATELY PREHEATED BEFORE SOLDERING.
3. REF. CARRIER TAPE SPECIFICATION # CART121-03.
4. TERMINATION FINISH IS 100% TIN.

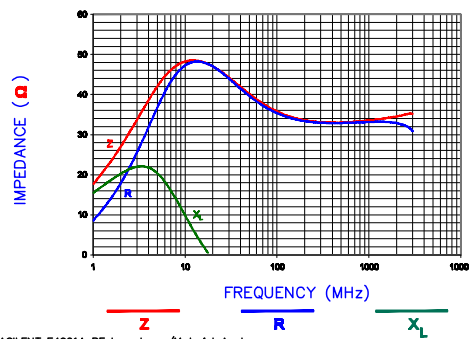
**UNCONTROLLED DOCUMENT**

Z vs. FREQUENCY  
IMPEDANCE UNDER DC BIAS



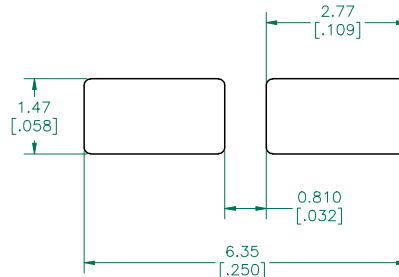
FREQUENCY (MHz)

|Z|, R, AND X vs. FREQUENCY



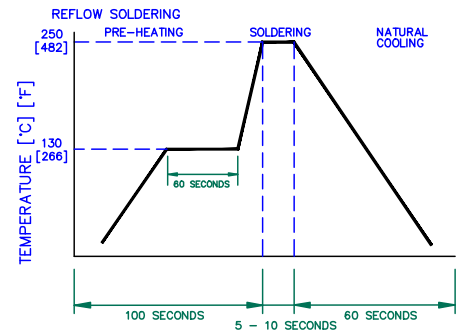
FREQUENCY (MHz)

**LAND PATTERNS FOR REFLOW SOLDERING**



(For wave soldering, add 0.762 [.030] to this dimension.)

**RECOMMENDED SOLDERING CONDITIONS**



DIMENSIONS ARE IN mm (INCHES).			This print is the property of Laird Tech. and is loaned in confidence subject to return upon request and with the understanding that no copies shall be made without the written consent of Laird Tech. All rights to design or invention are reserved.		
D	UPDATE COMPANY LOGO	01/23/09	JRK	PROJECT/PART NUMBER: 35F0121-0SR-10	
C	UPDATE LANDPATTERN	08/09/07	JRK	REV D	PART TYPE: ASSEMBLY
B	ADD ROHS SYMBOL UPDATE LOGO	05/04/07	JRK	DATE: 5/26/04	DRAWN BY: JRK
A	ORIGINAL DRAFT	5/26/04	JRK	SCALE: NTS	SHEET: 2 of 3
REV	DESCRIPTION	DATE	INT	TOOL # H0121	



AGILENT E4991A RF Impedance/Material Analyzer  
HP 16194A Test Fixture. TEST REF. 3544