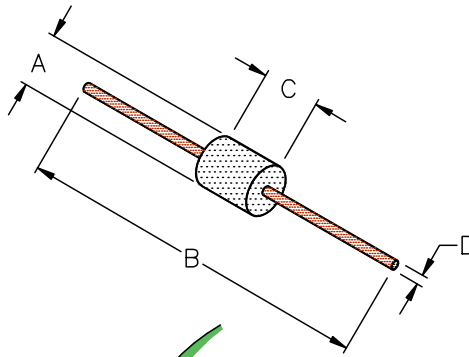


28L0138-10R-10

PHYSICAL DIMENSIONS:

A	3.51 [.138] ± 0.25 [.010]
B	59.00 [2.323] ± 1.57 [.062]
C	4.45 [.175] ± 0.25 [.010]
D	0.64 [.025] ± 0.05 [.002]

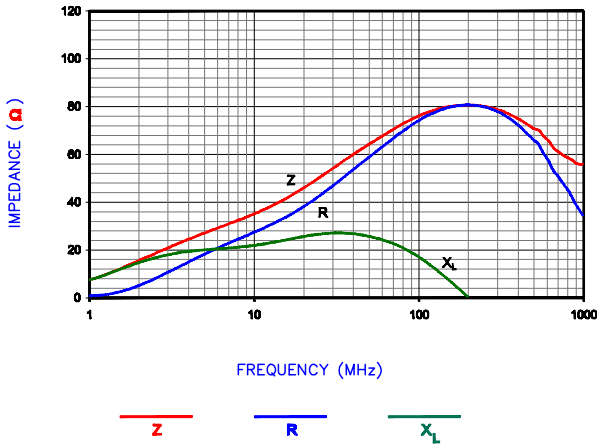


ELECTRICAL CHARACTERISTICS:

	Z (Ω) @		DCR (Ω)	Rated Current
	25 MHz	100MHz		
Nominal	45	75		
Minimum	-	56		
Maximum	-	94	0.01	5,000 mA

UNCONTROLLED DOCUMENT


|Z|, R, AND X vs. FREQUENCY



NOTES: UNLESS OTHERWISE SPECIFIED

- TAPED AND REELED per CURRENT EIA SPECIFICATIONS 14" REELS, 4500 PCS/REEL.
- COMPONENTS SHOULD BE ADEQUATELY PREHEATED BEFORE SOLDERING.
- WIRE: C10200 OXYGEN FREE COPPER (99.95 MIN.) 22AWG (.025 DIA.)
- PLATING: 100% TIN $5\mu \pm 2\mu$ [$200\mu\text{in} \pm 80\mu\text{in}$]
- WEIGHT/1000: .205 kgs. .452 lbs.
- REFERENCE STEWARD CORE P/N 28B0138-*00.

HP 4396A Network/Spectrum Analyzer
HP 43961A Impedance Test Kit, HP 16192A Test Fixture

DIMENSIONS ARE IN mm [INCHES]				THIS DOCUMENT CONTAINS INFORMATION WHICH IS PROPRIETARY TO STEWARD. NO PRODUCTION OR PUBLICATION OF THIS DOCUMENT SHALL BE MADE WITHOUT WRITTEN AUTHORIZATION FROM STEWARD.			
H	UPDATE COMPANY LOGO	04/20/07	JRK				
G	COR. REV BLOCK mm[INCHES] ADD ROHS	10/20/06	JRK				
F	CHANGE P/N (ADD -10) CHG NOTES 3 & 4 ON SHT2, ADD NO LEAD SYMBOL	10/14/03	JRK				
E	UPDATE FORMAT ADD NOTES,CHG CURRENT RATING	10/11/01	JRK				
D	ADDED (* NOTE & DIM) ON SHT 3of4 CORRECTED DIM "D" ON SHT 2 & 4	10/12/98	DTR				
C	UPDATE PRINT FORMAT	6/26/98	DTR	PROJECT/PART NUMBER:	REV:	DRAWN BY:	
B	MATCH REV. LEVEL ON 4 of 4	6/26/98	DTR	28L0138-10R-10	H	DTR	
A	ORIGINAL DRAFT	6/26/98	DTR	DATE:	SCALE:	SHEET:	
REV	DESCRIPTION	DATE	INT	6/26/98	NTS	2 of 3	
				28L0138-10R-10-H	TOOL # B0138		