

## Features

- Current rating up to 1.6 A
- Inductance range: 10 to 6500  $\mu$ H
- Frequency range to 300 MHz
- RoHS compliant\*

## Applications

- EMI suppression

# SRF0905 Series - Line Filter

### Electrical Specifications @ 25 °C

Part Number	L ( $\mu$ H) **	Leakage Ind. ( $\mu$ H) Max.	DCR ( $\Omega$ ) max. (each winding)	Rated Voltage (Vdc)	Rated Current (A)	Impedance (Z)	
						Freq. Range (MHz)	Min. Value ( $\Omega$ )
SRF0905-100Y	10 $\pm$ 30 %	8	0.08	50	1.6	20 - 300	200
SRF0905-250Y	25 $\pm$ 30 %	16	0.16	50	1.0	20 - 150	600
SRF0905-400Y	40 $\pm$ 30 %	18	0.25	50	0.9	20 - 100	800
SRF0905-500Y	50 $\pm$ 30 %	22	0.32	50	0.8	20 - 100	1500
SRF0905-251Y	250 $\pm$ 50 %	0.11	0.13	50	1.2	3 - 20	600
SRF0905-471Y	470 $\pm$ 50 %	0.12	0.14	50	1.1	2 - 20	1000
SRF0905-501Y	500 $\pm$ 50 %	0.12	0.15	50	1.0	1 - 20	1000
SRF0905-102Y	1000 $\pm$ 50 %	0.17	0.31	50	0.8	1 - 15	1500
SRF0905-202Y	2000 $\pm$ 50 %	0.25	0.42	50	0.6	1 - 5	3000
SRF0905-472Y	4700 $\pm$ 50 %	0.36	0.90	50	0.4	0.3 - 3	4000
SRF0905-652Y	6500 $\pm$ 50 %	0.39	1.05	50	0.3	0.3 - 2	5000

\*\* Test condition: 10 - 50  $\mu$ H, 0.1 V, 1 KHz; 250 - 6500  $\mu$ H, 5 mV, 100 KHz

### General Specifications

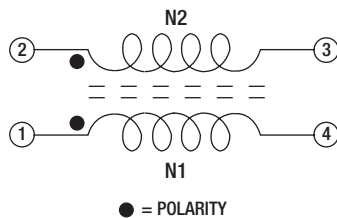
Temperature Rise .. 45 °C at rated current  
 Hi-Pot .....500 VAC, 60 Hz,  
 3 mA max. for 3 seconds  
 Operating Temperature  
 ..... -40 °C to +105 °C  
 (Temperature rise included)  
 Storage Temperature .. -40 °C to +105 °C  
 Solderability ..... 260 °C for 5 sec.  
 (JEDEC J-STD-020D)

### Materials

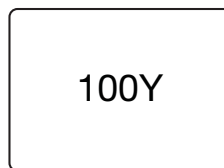
Core Material ..... Ferrite  
 Base ..... LCP  
 Wire ..... Enameled copper  
 Terminal coating ..... Sn  
 Packaging ..... 1000 pcs. per 13-inch reel

### Product Dimensions

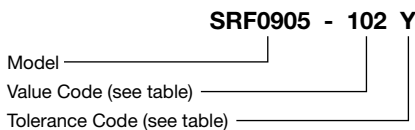
### Schematic



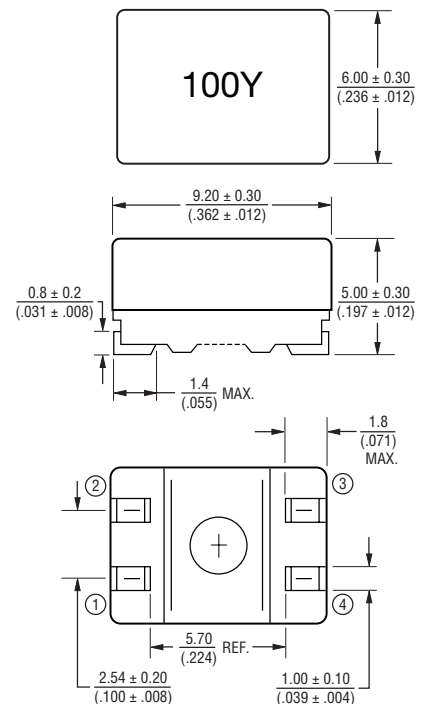
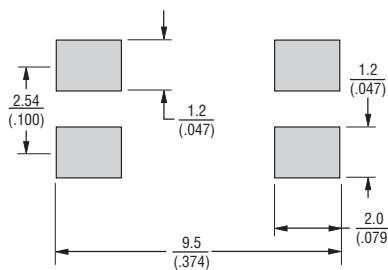
### Typical Part Marking



### How to Order



### Recommended Layout



DIMENSIONS:  $\frac{\text{MM}}{\text{(INCHES)}}$

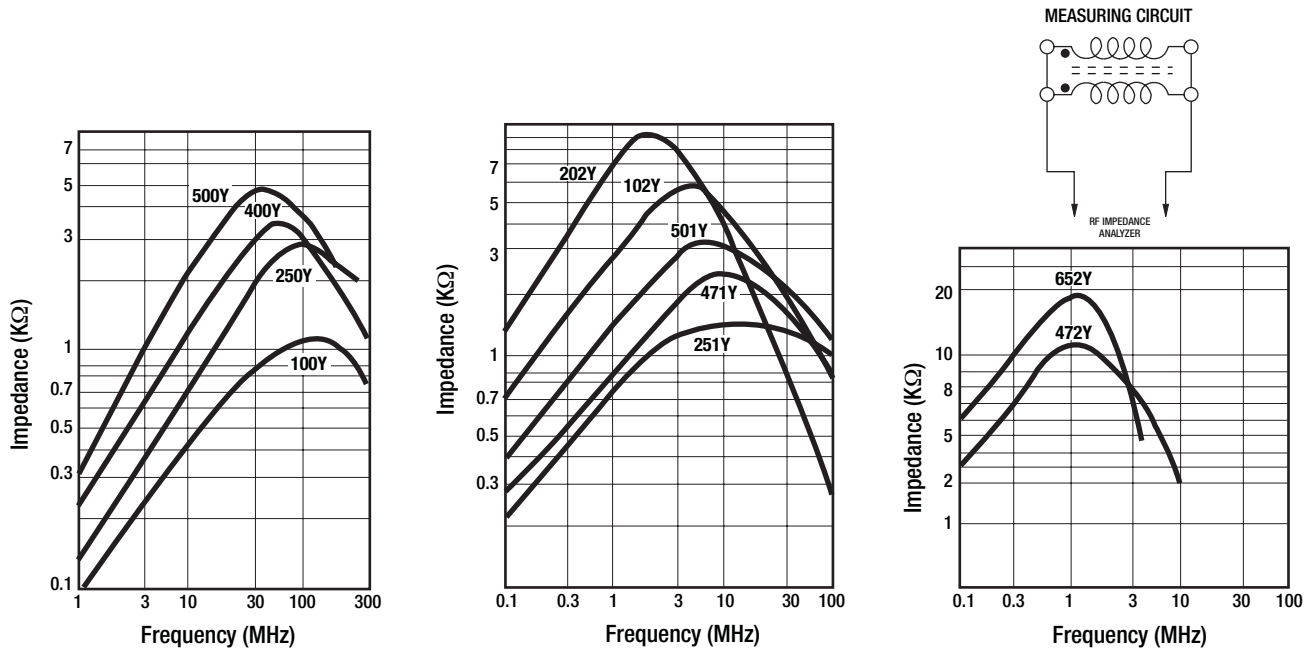
\*RoHS Directive 2002/95/EC Jan 27, 2003 including Annex. Specifications are subject to change without notice.

Customers should verify actual device performance in their specific applications.

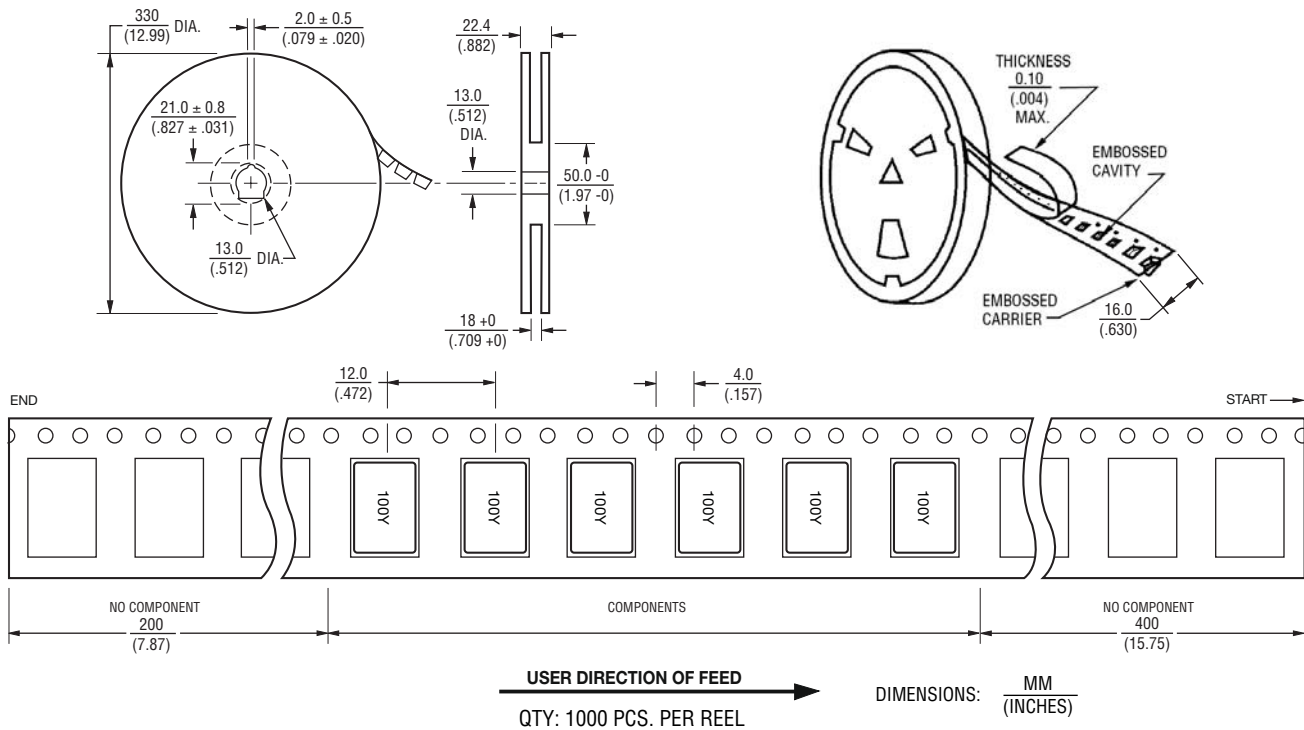
# SRF0905 Series - Line Filter

**BOURNS®**

## Impedance Graphs



## Packaging Specifications



REV. 09/10

Specifications are subject to change without notice.  
Customers should verify actual device performance in their specific applications.