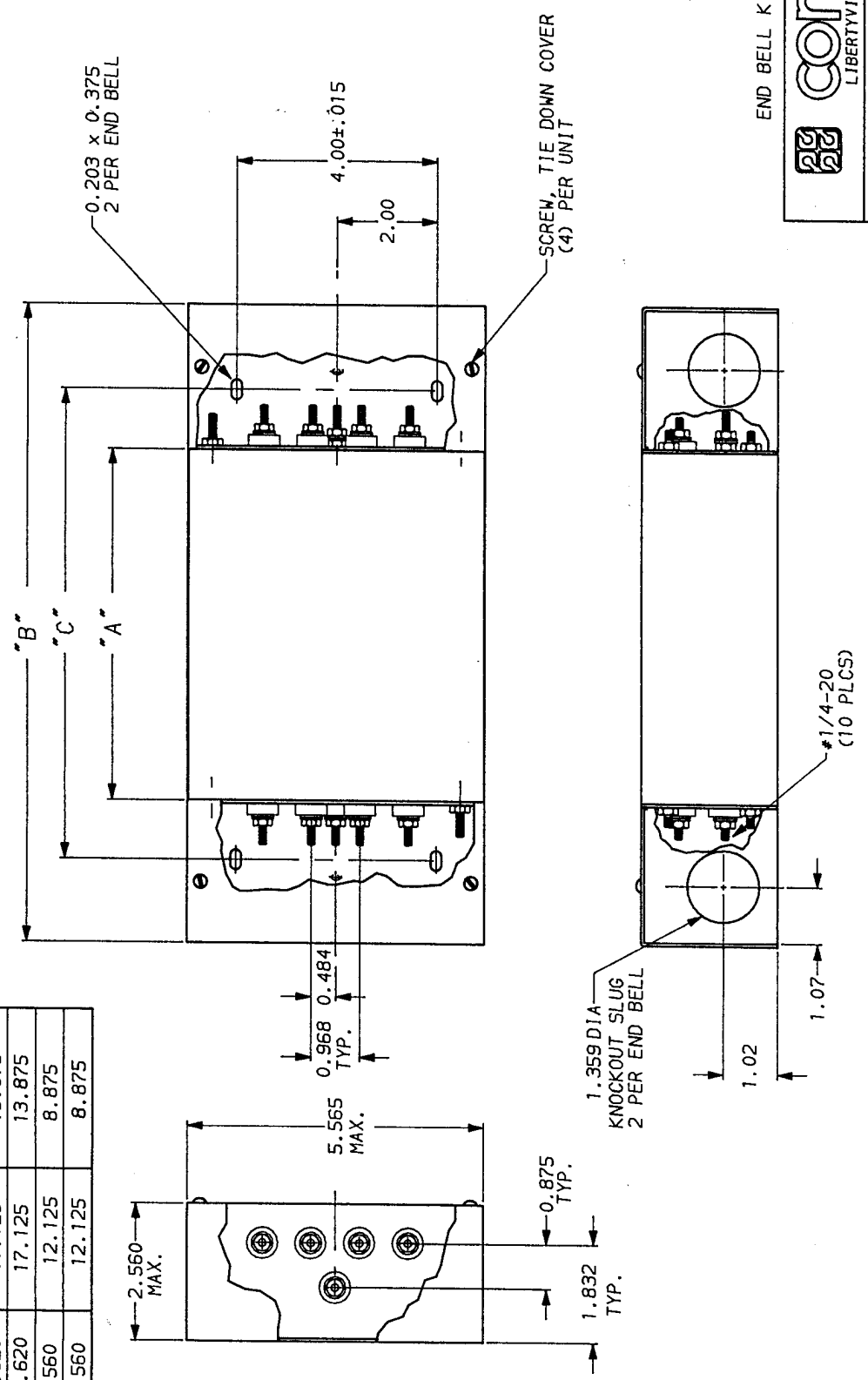


C. Webster
 APPROVED BY/DATE
 REV 6

PART NO.	DIM. "A" MAX.	DIM. "B" MAX.	DIM. "C" ±.030
20AYT6C	11.620	17.125	13.875
30AYT6C	11.620	17.125	13.875
20AYP6C	6.560	12.125	8.875
30AYP6C	6.560	12.125	8.875



END BELL KIT AA 406

corcom
 LIBERTYVILLE, IL 60048
 20AYP6C & 30AYP6C/20AYT6C & 30AYT6C WITH ENDBELLS

SCALE	DATE	ORG. NO.	REV.
.5x	9-13-88	20AYP6C & 20AYT6C 30AYP6C & 30AYT6C	5
DRW. BY	DESIGNATOR		
LJD	HKP		

This document is proprietary to CORCOM INC. and is not to be reproduced nor used for manufacturing purposes except on CORCOM's order or prior written consent.

NOTE: UNLESS OTHERWISE SPECIFIED, TOLERANCE TO BE ±.030