

4

3

2

1

D

D

C

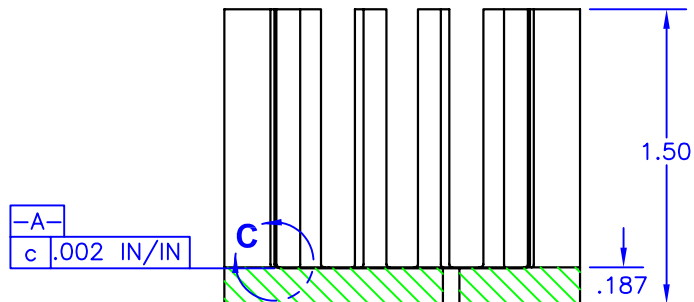
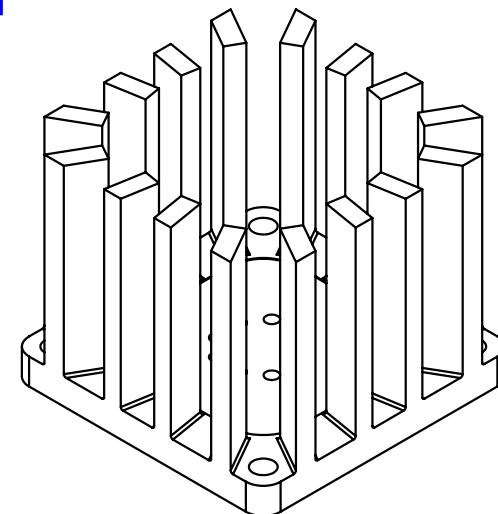
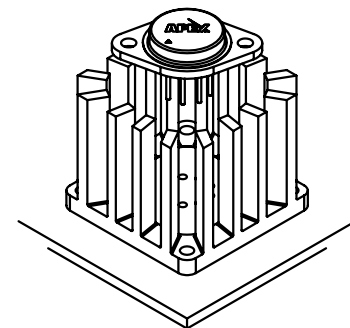
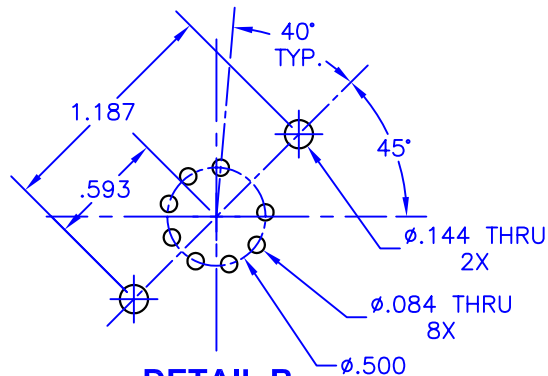
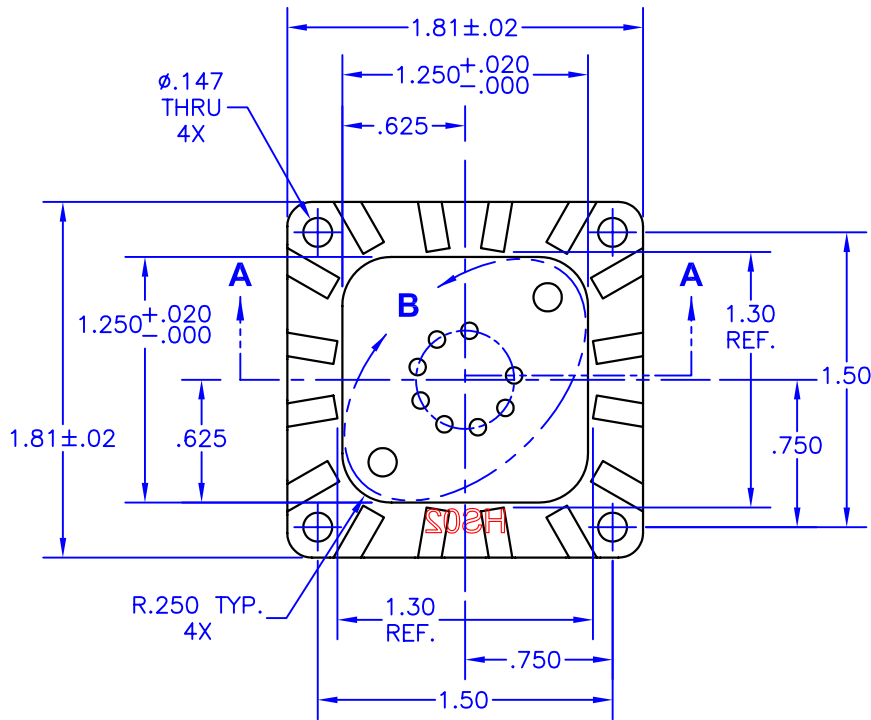
C

B

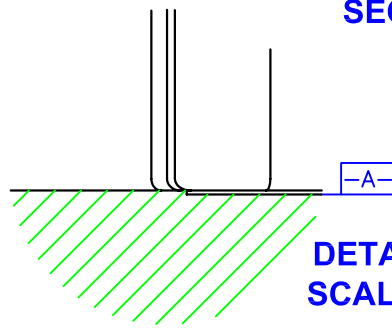
B

A

A



SECTION A-A



DETAIL C SCALE 4:1

NOTES:

1. Unless otherwise noted, all dimensions are in inches.
2. Break all sharp edges, de-burr & remove loose chips.
3. Material: Aluminum (M/F AAVID Thermalloy 5684 stamping blank)
4. Machine 1.25x1.25 area of surface -A- flat to within .002 in/in.
5. Finish: Anodize per MIL-A-8625, Type II, Class 2, Black
Typical breakdown voltage > 300V
6. Mark with contrasting ink as shown, if specified by P.O.
7. Approximate Weight: 1.9 oz [54g]

| | |
|---|---------|
| TOLERANCES - UNLESS OTHERWISE SPECIFIED | |
| .XX | = ±.01 |
| .XXX | = ±.005 |
| ANG. | = ±.5° |



| | | | | | | | | | |
|---------|-----------|-------|-----|--------------------|----------|-----|----------|-------------|--|
| TITLE | | | | HEATSINK, TO3 | | | | PART NO. | |
| SUBJECT | | | | MECHANICAL DRAWING | | | | HS02 | |
| ENG. | TECH/DWN. | DCA | SH. | OF | FILENAME | REV | DATE | | |
| D-M | D-M | 46411 | 1 | 1 | HS02-J | J | 10/13/04 | | |

4

3

2

1