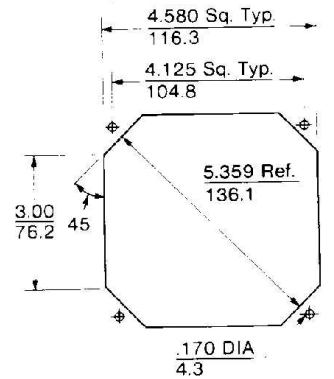
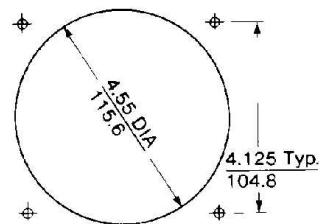


.173 DIA x .350 DEEP
4.39 8.89
 2 PLACES (AS SHOWN AND 180° FAR SIDE)
 USE #10-32 TYPE "F" SELF-TAPPING SCREW
 FOR GROUND CONNECTION.

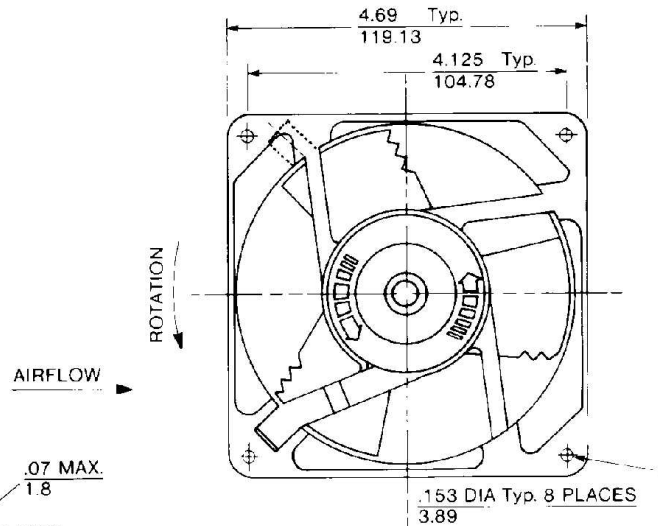
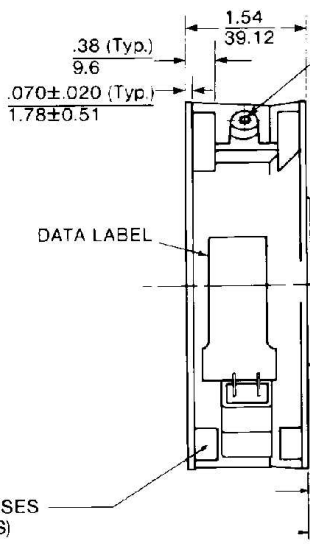
RECOMMENDED CUT OUT



OUTLET (STRUT) SIDE



INLET (PROP) SIDE

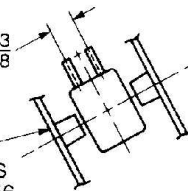


MTG BOSSES
(8 PLACES)

WILL ACCOMMODATE #550113
 BLIND MOUNTING CLIPS FOR USE
 WITH #6-32 MACHINE SCREW.

WILL FIT PLUG &
 CORD ASSEMBLIES
 #550440 & #428056
 OR AMP 110 SERIES
 RECEPTACLES OR
 EQUIVALENT

.312±.003
7.92±0.08



TERMINALS

.120±.002 WIDE
3.05±0.05

.020±.001 THICK
0.51±0.03

.300±.025 LONG
7.62±0.64

DIMENSIONS: $\frac{\text{in}}{\text{mm}} \pm$
 TOLERANCES: .xx= .03
 .08
 .xxx=.010
 (UNLESS NOTED) .25

Specifications subject to change without notice.