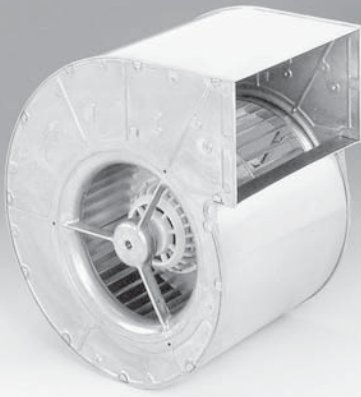


# RD31P Series

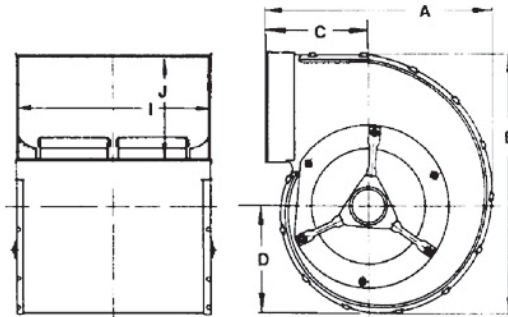
## Centrifugal Blower

Ø 310mm

- AC dual inlet, forward curved centrifugal blower in standard housing. The integrated external-rotor motor is mounted inside the housing.
- Direction of rotation is CW as seen from inlet side. Insulation class "F".
- Housing and impeller made of galvanized sheet-steel. Forward curved impellers are directly press-fitted onto the rotor of the external-rotor motor.
- Maintenance-free ball bearings.
- UL, CSA, VDE approvals on some models, please contact application engineering.



Part Number	CFM @ 0	VAC	Power (W)	dBA	Max Amb. Temp C	Bearing Type	Features	Wgt. (lbs)
RD31P-4/111479	5300	277/440	1100	n/a	40	Ball	Leads	40.0



DIMENSIONS - Inches (mm)

PART NUMBER	A	B	C	D	I
RD31P-4/207323	20.31 (516)	23.74 (603)	8.66 (220)	10.16 (258)	15.94 (405)