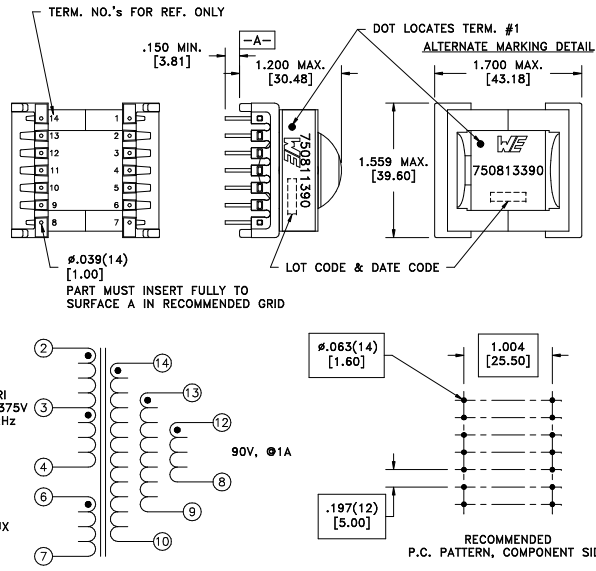


| CUSTOMER TERMINAL | RoHS | LEAD(Pb)-FREE |
|-------------------|------|---------------|
| Sn96%, Ag4%       | Yes  | Yes           |

more than you expect



ELECTRICAL SPECIFICATIONS @ 25°C unless otherwise noted:

| PARAMETER          | TEST CONDITIONS                                    | VALUE                  |
|--------------------|--|------------------------|
| D.C. RESISTANCE    | 2-4 @20°C  | 0.15 ohms ±20%         |
| D.C. RESISTANCE    | 6-7 @20°C  | 0.055 ohms max.        |
| D.C. RESISTANCE    | 8-12 @20°C   | 0.668 ohms max.        |
| D.C. RESISTANCE    | 9-13 @20°C   | 0.668 ohms max.        |
| D.C. RESISTANCE    | 10-14 @20°C  | 0.668 ohms max.        |
| INDUCTANCE         | 2-4 10kHz, 100mVAC, Ls                             | 100uH ±10%             |
| SATURATION CURRENT | 20% rolloff from initial                           | 9A                     |
| LEAKAGE INDUCTANCE | 2-4 tie(6+7, 8+9+10+12+13+14), 100kHz, 100mVAC, Ls | 1.0uH typ., 2.0uH max. |
| DIELECTRIC         | 2-14 tie(4+6, 12+13+14), 4500VAC, 1 second         | 4500VAC, 1 minute      |
| DIELECTRIC         | 2-6 1250VAC, 1 second                              | 1000VAC, 1 minute      |
| URNS RATIO         | (2-4):(14-10)                                      | 1:1, ±1%               |
| URNS RATIO         | (2-4):(13-9)                                       | 1:1, ±1%               |
| URNS RATIO         | (2-4):(12-8)                                       | 1:1, ±1%               |
| URNS RATIO         | (2-4):(6-7)  | 4.5:1, ±1%             |
| URNS RATIO         | (2-4):(3-4)  | 1.08:1, ±1%            |

GENERAL SPECIFICATIONS:

Designed to comply with the following requirements as defined by IEC61558-2-17:  
 - Reinforced insulation for a primary circuit at a working voltage of 400VDC.

Wire insulation & RoHS status not affected by wire color.  
 Wire insulation color may vary depending on availability.

|      |      |  |  |  |                                     |                              |
|------|------|--|--|--|-------------------------------------|------------------------------|
| REV. | DATE | Packaging Specifications<br>Method: Tray<br>PKG-0043<br>www.we-online.com/midcom |  | Tolerances unless otherwise specified:<br>Angles: ±1°<br>Fractions: ±1/64<br>Decimals: ±.005 [.13]<br>Footprint: ±.001 [.03] | DRAWING TITLE<br><b>TRANSFORMER</b> | PART NO.<br><b>750813390</b> |
| 6B   | 4/11 |  |  | This drawing is dual dimensioned. Dimensions in brackets are in millimeters.   | eISos p/n: 750813390                | compliant<br><b>RoHS</b>     |
| 6A   | 3/11 | SEE REVISION SHEET FOR REVISION LEVEL  |  |  |                                     |                              |