

MICRO SWITCH

A DIVISION OF MINNEAPOLIS-HONEYWELL REGULATOR COMPANY
MILWAUKEE, WISCONSIN

FED. MFR. CODE 91929

ASSEMBLY- TOGGLE SWITCH

CATALOG LISTING

6AT7-T

6AT7-T

M

DRAWING NUMBER

6

ISSUE

4

4

REVISIONS

A C.O. 10771
O.M.W.
24 SEPT. 56

B CO13507
M.B.F.
2 APR 59

C CORR
H.B.W.
19 MAR 64

D CO 50566-B
W.J.M.
5 MAY 82

E CO-58771
K.A.G.
14 FEB 86

F CO-68001
S.A.V.
20 JUL 90

74-28

DRAWN

H.A.P.

1 JUNE '55

CHECK

FVL

7 JUNE '55

CHECK

GRH

3 JUNE '55

CHECK

GRH

REPLACES

RELEASE NO. SR 4560

CNT 4 JUNE '55

CHECK

GRH

CHECK

7 JUNE '55

CHECK

FVL

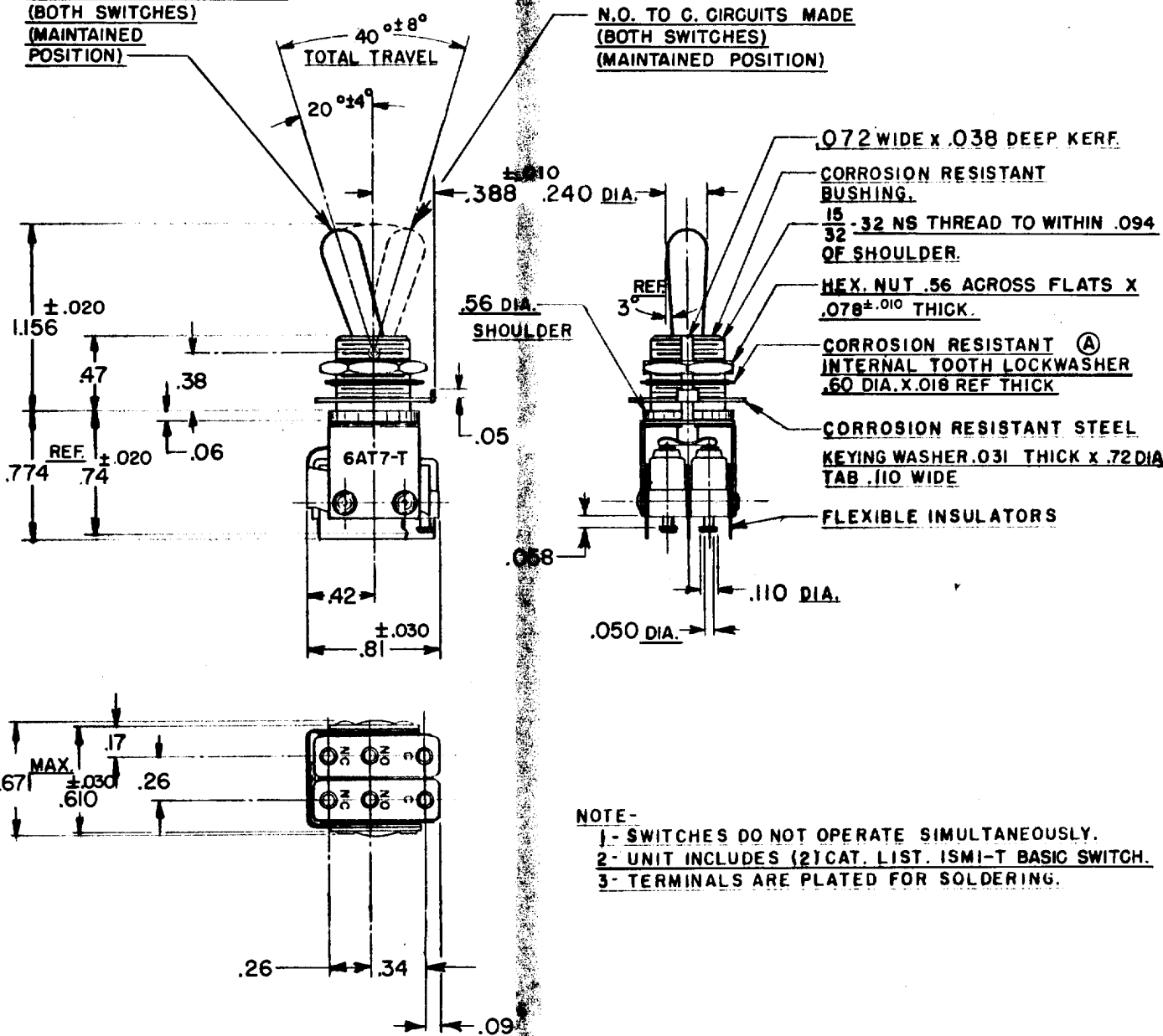
1 JUNE '55

CHECK

H.A.P.

N.C. TO C. CIRCUITS MADE
(BOTH SWITCHES)
(MAINTAINED POSITION)

N.O. TO C. CIRCUITS MADE
(BOTH SWITCHES)
(MAINTAINED POSITION)



THIS DRAWING COVERS A PROPRIETARY ITEM AND IS THE PROPERTY OF MICRO SWITCH, A DIVISION OF HONEYWELL. THIS DRAWING IS NOT TO BE COPIED OR USED WITHOUT THE APPROVAL OF MICRO SWITCH.

CHARACTERISTICS	ELECTRICAL DATA	SCALE FULL
	CONTACT ARRANGEMENT (2) S.P.D.T.	DO NOT SCALE PRINT
	BREAK DISTANCE .010 MIN.	UNLESS OTHERWISE SPECIFIED
	250 VAC ----- 5 AMP	DIMENSIONS ARE IN INCHES
	30 VOLTS DC RATING	TOLERANCES ARE:
	INDUCTIVE ----- SEA LEVEL ----- 3 AMP	ONE PLACE (.0) ±.030
	50,000 FT. ----- 2.5 AMP	TWO PLACE (.00) ±.018
	RESISTIVE ----- SEA LEVEL ----- 5 AMP	THREE PLACE (.000) ±.008
	50,000 FT. ----- 5 AMP	ANGLES ±
	(B) MAXIMUM INRUSH ----- 24 AMP	WEIGHT .06 LB.