

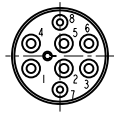
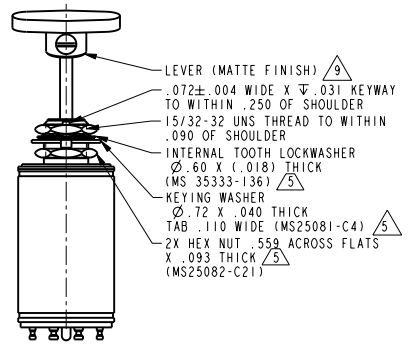
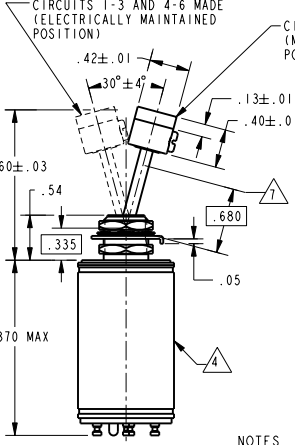
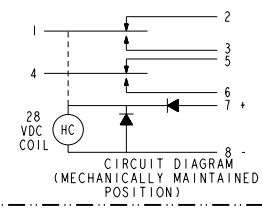
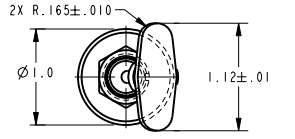
CATALOG LISTING 26ET33-T
 ISSUE 5
 PAGES 1 OF 1
 RELEASE NO. PR-22256-T
 REVISIONS
 A 205955
 C S L 10 JUL 62
 PTC/CAD 20
 DRAWN
 C S L 10 JUL 02 CHECK S A V 10 JUL 02 CHECK

MICRO SWITCH
 a Honeywell Division
 FED. MFG. CODE 91929

SWITCH - TOGGLE
(MAGNETIC HOLD-IN)

CATALOG LISTING
26ET33-T

THIS DRAWING COVERS A PROPRIETARY ITEM AND IS THE PROPERTY OF MICRO SWITCH, A DIVISION OF HONEYWELL. THIS DRAWING IS NOT TO BE COPIED OR USED WITHOUT THE APPROVAL OF MICRO SWITCH



- NOTES**
- 1 - CIRCUITS CAN BE TRANSFERRED MANUALLY. ENERGIZING THE COIL WILL NOT CAUSE TRANSFER OF CIRCUITS
 - 2 - HOLD IN VOLTAGE: THE MINIMUM SPECIFIED VOLTAGE AT WHICH THE LEVER WILL REMAIN ACTUATED. HOLD IN MAY OCCUR AT A LOWER VALUE. DROP OUT VOLTAGE: THE VOLTAGE RANGE IN WHICH THE LEVER WILL BE RELEASED
 - 3 - CONTACT HONEYWELL-MICRO SWITCH IF ADDITIONAL INFORMATION ON LOW ENERGY LOADS IS REQUIRED OR FOR HELP WITH SPECIFIC APPLICATIONS
 - 4 - SWITCH LABEL TO SHOW: MICRO SWITCH, FEDERAL MANUFACTURING CODE, CATALOG LISTING, CIRCUIT DIAGRAM AND DATE CODE
 - 5 - HARDWARE FURNISHED UNASSEMBLED PER MIL-S-5594
 - 6 - SWITCHES DO NOT NECESSARILY OPERATE SIMULTANEOUSLY
 - 7 - FORCE TO BE APPLIED AT THIS POINT
 - 8 - THE DIODES ARE JANTXV TYPE AND LIMIT THE EMI SPIKES (TRANSIENTS OF DURATION LESS THAN 500 MICROSECONDS) GENERATED BY THE SWITCH
 - 9 - COIL SHALL NOT EXCEED +42 OR -40 VOLTS ABSOLUTE LEVER PROVIDED UNASSEMBLED

SPECIFICATION DETAILS:					
STANDARD:	CONFORMS TO MIL-S-5594				
CONSTRUCTION:	SEALED TO 1X10 ⁻⁶ ATM*CC/S PER MIL-S-5594 PARA. 3.12 & 4.9.8				
ENCLOSURE DESIGN	SILICONE RUBBER				
SEAL MATERIAL	SMOOTH GOLD PLATED SILVER CONTACTS /3\				
CONTACT MATERIAL & CONFIGURATION	2X S.P.D.T.				
CIRCUIT CONFIGURATION	SOLDER TERMINALS				
TERMINATION	4 ozf (1.1 N) MAX				
WEIGHT	CORROSION RESISTANT OR SUITABLY PROTECTED TO PREVENT CORROSION				
EXPOSED METALS	BLUE EPOXY BASED ENAMEL COLOR NO. 25184 PER FEDERAL STANDARD 595				
ENCLOSURE PAINT	ELECTRICAL CHARACTERISTICS:				
ELECTRICAL RATINGS		VOLTAGE	INDUCTIVE	RESISTIVE	MOTOR
-SEA LEVEL		28 VDC	2.5 AMP	4 AMP	4 AMP
-65,000 FEET		28 VDC	2.0 AMP	4 AMP	4 AMP
DIELECTRIC STRENGTH & INSULATION RES		DIELECTRIC STRENGTH		INSULATION RESISTANCE	
-BETWEEN ALL TERMINALS AND EXPOSED NON-CURRENT CARRYING METAL OR GROUNDED PARTS		≈ 60 Hz FOR 5 SEC		N/A	
-BETWEEN ALL TERMINALS OF MUTUALLY INSULATED CIRCUITS, INCLUDING BETWEEN POLES		1000V RMS, 1000µA (MAX LKG)		N/A	
-BETWEEN ALL UNCONNECTED TERMINALS OF THE SAME POLE		1000V RMS, 1000µA (MAX LKG)		N/A	
SWITCH RESISTANCE		N/A			
RECOMMENDATION OR USE IN APPL LESS THAN .5 amps AND/OR 12 volts		YES			
MECHANICAL CHARACTERISTICS:					
STEADY STATE LIMITS		20 -30 VDC			
HOLD IN VOLTAGE		15 VDC			
DROP OUT VOLTAGE		1.5-15 VDC			
OPERATING FORCE AT 30 VDC		7 lbf (31.1 N) MAX			
OVERRIDE FORCE AT 30 VDC		10 lbf (44.5 N) MAX			
SOLENOID RESISTANCE AT 30 VDC AND 68°F (20°C)		220 OHMS MIN			
MOUNTING STRENGTH		15 lbf-IN (1.7 NM) MAX			
ACTUATING STRENGTH		25 lbf (111.2N) PER MIL-S-5594 PARA.3.8 & 4.9.4.A 15 lbf (66.7N) PER MIL-S-5594 PARA.3.8 & 4.9.4.B			
LIFE:					
MECHANICAL LIFE		40,000 CYCLES MIN PER MIL-S-5594 PARA.3.10 & 4.9.6			
ELECTRICAL LIFE AT FULL RATED LOAD		20,000 CYCLES MIN PER MIL-S-5594 PARA.3.11 & 4.9.7			
ENVIRONMENTAL:					
TEMPERATURE RANGE	-85°F (-65°C) TO +160°F (+71°C)				
ALTITUDE RANGE	SEA LEVEL TO 65,000 FT				
SHOCK	PER MIL-S-5594 PARA. 3.14 & 4.9.10				
VIBRATION	PER MIL-S-5594 PARA. 3.13 & 4.9.9				
MOISTURE RESISTANCE	PER MIL-S-5594 PARA. 3.17 & 4.9.13				
ACCELERATION	PER MIL-S-5594 PARA. 3.15 & 4.9.11				
SALT SPRAY	PER MIL-S-5594 PARA. 3.16 & 4.9.12				
SAND AND DUST	PER MIL-S-5594 PARA. 3.18 & 4.9.14				
EXPLOSION	PER MIL-S-5594 PARA. 3.19 & 4.9.15				
				THIRD ANGLE PROJECTION	
				SCALE FULL	
DO NOT SCALE PRINT					
UNLESS OTHERWISE SPECIFIED TOLERANCES ARE					
NO PLACE (0) ±1					
ONE PLACE (0.0) ±0.4					
TWO PLACE (0.00) ±0.15					
ANGLES ±					
WEIGHT					

ANSI Y14.5M-1982 APPLIES