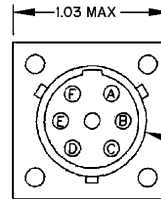
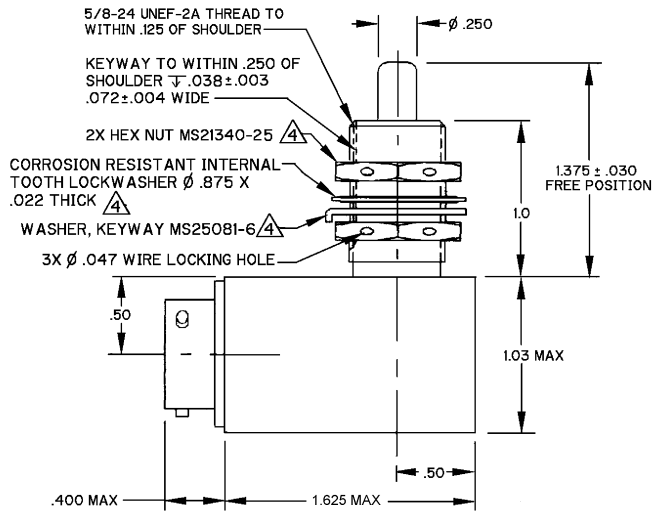


MICRO SWITCH
a Honeywell Division
FED. WFO. CODE 61929

SWITCH - ENCLOSED

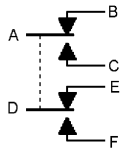
CATALOG LISTING
ML-1303
CUSTOMER PART NUMBER
10502213



RECEPTACLE MEETS MIL-C-38999 SERIES II, MS27476Y10D99P

CONNECTOR/END VIEW DETAIL

CIRCUIT DIAGRAM



NOTES

- 1 - PRINT CIRCUIT DIAGRAM, CATALOG LISTING AND DATE CODE ON NAMEPLATE
- 2 - CORROSION RESISTANT STEEL PLUNGER
- 3 - SWITCH SEALED PER MIL-PRF-8805 SYMBOL 3
- 4 - HARDWARE MAY BE PACKAGED UNASSEMBLED PER MIL-PRF-8805
- 5 - HOUSING IS PLATED TO RESIST CORROSION, AND PAINTED WITH GREEN EPOXY BASED ENAMEL, FED-STD-595, COLOR 34151, PER MIL-C-22750

ANSI Y14.5M-1982 APPLIES

THIS DRAWING COVERS A PROPRIETARY ITEM AND IS THE PROPERTY OF MICRO SWITCH, A DIVISION OF HONEYWELL. THIS DRAWING IS NOT TO BE COPIED OR USED WITHOUT THE APPROVAL OF MICRO SWITCH.

THIRD ANGLE PROJECTION

| CHARACTERISTICS | ELECTRICAL DATA | | SCALE |
|--|--------------------------------|-----------|---|
| | CONTACT ARRANGEMENT 2X SPDT | | 2:1 |
| OPERATING FORCE - - - - - 6-12 LBS | | | DO NOT SCALE PRINT |
| FULL OVERTRAVEL FORCE - - - 30 LBS MAX | | | UNLESS OTHERWISE SPECIFIED TOLERANCES ARE |
| RELEASE FORCE - - - - - 4 LB MIN | | | ONE PLACE (.01) \pm .030 |
| PRETRAVEL - - - - - .040 MAX | | | TWO PLACE (.001) \pm .015 |
| DIFFERENTIAL TRAVEL - - - .020 MAX | | | THREE PLACE (.0001) \pm .005 |
| OVERTRAVEL - - - - - .250 MIN | | | ANGLES \pm |
| | LOAD (AMPS) | 28 VDC | WEIGHT |
| | SEA LEVEL | 50,000 FT | |
| | RESISTIVE | 7 4 | |
| | INDUCTIVE | 4 25 | |
| | MOTOR | 4 - | |

CATALOG LISTING
ML-1303
 ISSUE
B
 RELEASE NO. 0001378
 REPLACES
 CHECK
 REVISIONS
A 0002473
 C.S.L. 10 DEC 03
 CHECK
 SA V 4 SEP 03
 CHECK
 RASTER
 DRAFT
 C.S.L. 4 SEP 03
 CHECK