

MICRO SWITCH

A DIVISION OF MILWAUKEE-HONEYWELL REGULATOR COMPANY

MILWAUKEE, WISCONSIN

FED. MFR. CODE 91929

ACTUATOR-SWITCH

CATALOG LISTING

JE-50

JE-50

M

DRAWING NUMBER

8

X

ISSUE

84

REPLACES

RELEASE NO. S.R. 6347

CNT 3 Apr. 57

CNT 3 Apr. 57

CNT 3 Apr. 57

CNT 3 Apr. 57

CNT 3 Apr. 57

CNT 3 Apr. 57

CNT 3 Apr. 57

CNT 3 Apr. 57

CNT 3 Apr. 57

CNT 3 Apr. 57

CNT 3 Apr. 57

CNT 3 Apr. 57

CNT 3 Apr. 57

CNT 3 Apr. 57

CNT 3 Apr. 57

CNT 3 Apr. 57

CNT 3 Apr. 57

CNT 3 Apr. 57

CNT 3 Apr. 57

CNT 3 Apr. 57

CNT 3 Apr. 57

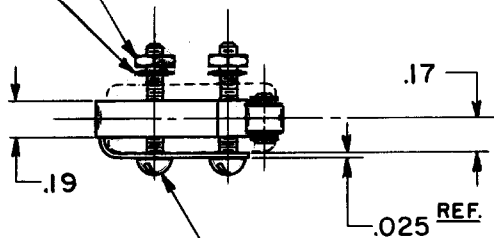
CNT 3 Apr. 57

CNT 3 Apr. 57

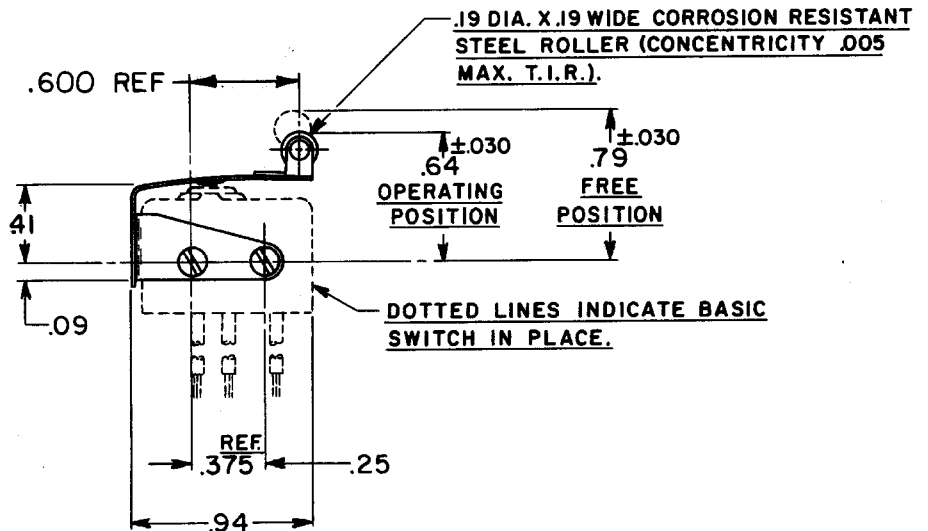
CNT 3 Apr. 57

(2) 2-56 NC HEX. NUT

(2) LOCKWASHER



(2) 2-56 NC X .625 ROUND HEAD MACHINE SCREW



NOTE-
1-SCREWS, NUTS, AND LOCKWASHERS FURNISHED UNASSEMBLED.

THIS DRAWING COVERS A PROPRIETARY ITEM AND IS THE PROPERTY OF MICRO SWITCH, A DIVISION OF HONEYWELL. THIS DRAWING IS NOT TO BE COPIED OR USED WITHOUT THE APPROVAL OF MICRO SWITCH.

CHARACTERISTICS (WITH ISEI BASIC SWITCH INSTALLED)

OPERATING FORCE - - - - - 12 OZ. MAX.

RELEASE FORCE - - - - - 2 OZ. MIN.

DIFFERENTIAL TRAVEL - - - - .025 MAX.

OVERTRAVEL - - - - - .015 MIN.

ELECTRICAL DATA

CONTACT ARRANGEMENT

BREAK DISTANCE

SCALE - FULL

DO NOT SCALE PRINT

UNLESS OTHERWISE SPECIFIED
DIMENSIONS ARE IN INCHES
TOLERANCES ARE:

ONE PLACE (.0) ±.030
TWO PLACE (.00) ±.015
THREE PLACE (.000) ±.005
ANGLES ±

WEIGHT

DRAWN

K. A. F. 30 MARCH 57

RLZ 8 Apr. 57

RED 1 Apr. 57

WJM 14 APR 87

CJH 17 MAY 80

DLT 3 MAR 95

CO 61293

CO 047771

FO-80378