

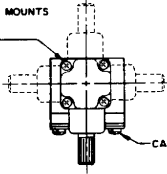
MICRO SWITCH
a Honeywell Division

SWITCH - ENCLOSED

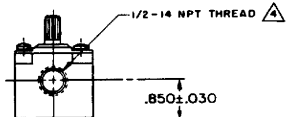
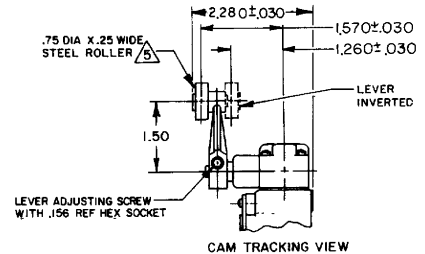
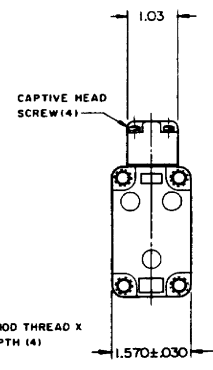
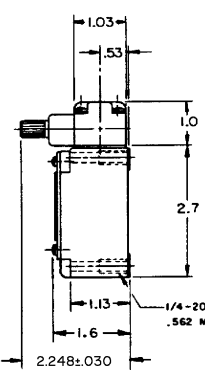
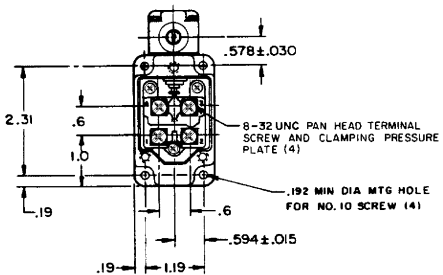
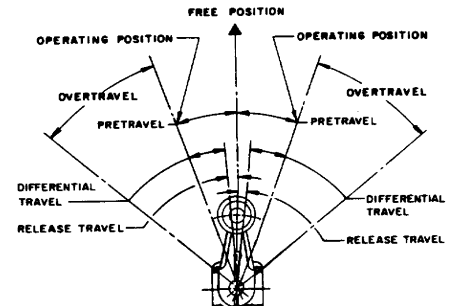
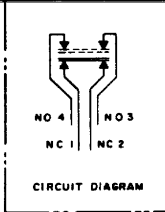
CATALOG LISTING
1LS301-L

FED. MFG. CODE 91929

OPERATING HEAD MOUNTS
IN ANY OF FOUR
POSITIONS



CAPTIVE COVER SCREW (3)



- NOTES
- SWITCH IS ASSEMBLED FOR ACTUATION IN BOTH DIRECTIONS BUT MAY BE ADJUSTED TO ACTUATE IN EITHER THE CLOCKWISE DIRECTION ONLY OR THE COUNTERCLOCKWISE DIRECTION ONLY
 - TO CONVERT SWITCH FOR ACTUATION IN EITHER THE CLOCKWISE OR COUNTERCLOCKWISE DIRECTION ONLY, REMOVE ACTUATOR HEAD AND ROTATE THE NOTCHED PLUNGER 90° TO THE RIGHT FOR CLOCKWISE ACTUATION OR 90° TO THE LEFT FOR COUNTERCLOCKWISE ACTUATION

- 4 SEAL TO BE FURNISHED BY USER
5 ROLLER LEVER MAY BE LOCKED IN ANY POSITION THRU 360°
6 LEVER FURNISHED UNASSEMBLED IN UNIT PACKING BOX

THIS DRAWING COVERS A PROPRIETARY ITEM AND IS THE PROPERTY OF MICRO SWITCH, A DIVISION OF HONEYWELL. THIS DRAWING IS NOT TO BE COPIED OR USED WITHOUT THE APPROVAL OF MICRO SWITCH		THIRD ANGLE PROJECTION
CHARACTERISTICS	ELECTRICAL DATA	SCALE 1/2 TO 1
OPERATING TORQUE-----4.5 IN-LB MAX	CONTACT ARRANGEMENT	DO NOT SCALE PRINT
FULL OVERTRAVEL TORQUE-----6 IN-LB MAX	(SEE CIRCUIT DIAGRAM)	UNLESS OTHERWISE SPECIFIED TOLERANCES ARE
RELEASE TORQUE-----75 IN-LB	L126 10A 125, 250 OR 480 VAC	ONE PLACE (1.0) ± .030
PRETRAVEL-----20° MAX	1/3HP 125 VAC, 3/4HP 250 VAC	TWO PLACE (1.00) ± .015
DIFFERENTIAL TRAVEL-----12° MAX	0.8A 125 VDC, 0.4A 250 VDC	THREE PLACE (1.000) ± .005
OVERTRAVEL-----30° MIN		ANGLES ±
RELEASE TRAVEL-----5° MIN		WEIGHT
SWITCH-BASIC REPLACEMENT-----2MN301-L		

CATALOG LISTING 1LS301-L
 ISSUE 6
 RELEASE NO. PR-18856
 CHECK 5 MAY 95
 DRAWN GJW 7 APR 95
 CHECK JAF
 FORMTEK