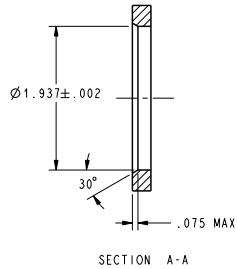
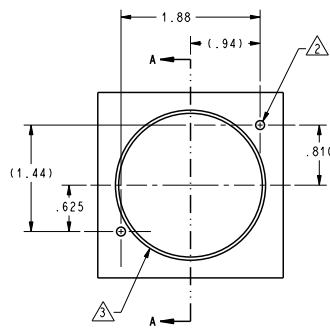
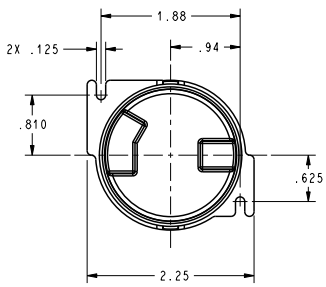
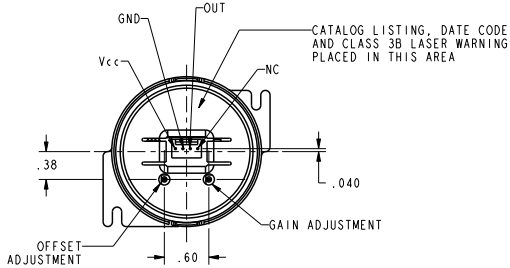
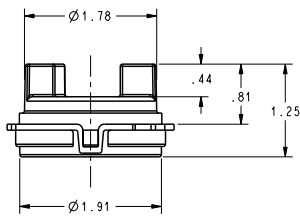


REV	DOCUMENT	CHANGED BY	CHECK
A	0003228	RJ 13APRO4	AK



SENSOR MOUNTING DIMENSIONS



NOTES

- 1 DIMENSIONS ARE IN INCHES
- 2 MOUNTING HOLES ACCEPT #4 SELF-TAPPING SCREWS, .250 MIN LENGTH
- 3 SURFACE FINISH ON SEALING SURFACE NOT TO EXCEED 32 MICROINCHES OR SPI #15
- 4 MATING CONNECTOR: MOLEX 10-11-2043 KK HEADER, 4 POSITION
- 5 RECOMMENDED RANGE OF USE IS 0 TO 600 NTU's
- 6 THE GRAPH DEPICTING THE CHARACTERISTIC FOR THE SENSOR IS BASED ON TESTING WHICH USES FORMAZIN AS THE TURBID MEDIA AT ROOM TEMPERATURE THESE CHARACTERISTICS MAY CHANGE WHEN THE SENSOR IS SUBJECTED TO MEDIA OTHER THAN FORMAZIN
- 7 RECOMMENDED O-RING, AS132 CROSS SECTION OF .103 EPDM MATERIAL
- 8 OUTPUT IS RATIO METRIC TO SUPPLY VOLTAGE, ALL CALIBRATION DATA TAKEN WITH 5 VDC SUPPLY AND R load = 100 K Ω

GENERAL				
	MIN	TYP	MAX	UNITS
SUPPLY VOLTAGE	4.5	5	5.5	VOLTS
SUPPLY CURRENT		10	15	mA
OUTPUT VOLTAGE	0.5		4.5	VOLTS
OPERATING TEMPERATURE	0		70	°C

TURBIDITY				
	MIN	TYP	MAX	UNITS
RANGE	0		600	NTU
ACCURACY				SEE CALIB. DATA

UNLESS OTHERWISE SPECIFIED TOLERANCES ARE:	<input checked="" type="checkbox"/> FRACTIONAL	<input type="checkbox"/> DECIMAL	<input type="checkbox"/> MIXED	DRAWN	RJ	13APRO4
NO PLACE	X	±.040	±1	CHECK	AK	13APRO4
ONE PLACE	.X	±.030	±0.4	THIS DRAWING COVERS A PROPRIETARY ITEM AND IS THE PROPERTY OF HONEYWELL. THIS DRAWING IS NOT TO BE COPIED OR USED WITHOUT THE PERMISSION OF HONEYWELL.		
TWO PLACE	.XX	±.015	±0.15			
THREE PLACE	.XXX	±.005	±			
ANGLES		±	±			
RAW MATERIAL-COMMERCIAL STANDARD				DIMENSIONS ARE TO BE MET BEFORE PROTECTIVE COATINGS ARE APPLIED		
THIRD ANGLE PROJECTION				3D PTC	ASME Y14.5M-1994	

Honeywell			
TITLE TURBIDITY SENSOR, LOW NTU			
SIZE	DWG TYPE	DRAWING NAME	REV
C	I	APMS-IGVCF-KIT	A
SCALE	1:1	WEIGHT	SHEET 1 of 1