

DC to AC Inverters

Connector type, Dimming, 4W, for 1 Bulb

Conformity to RoHS Directive

CXA Series CXA-L0605-VSL

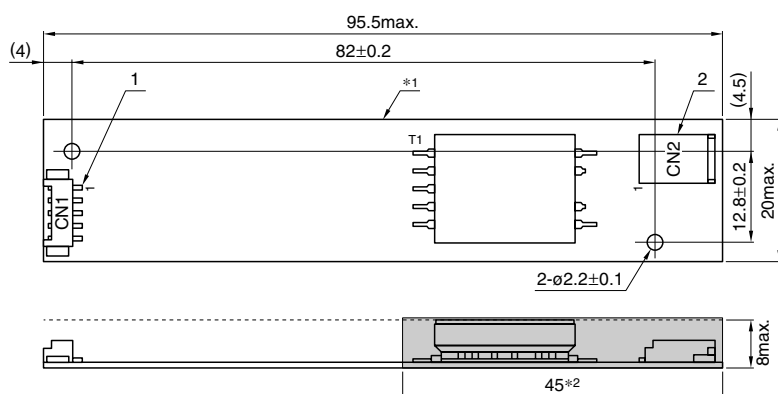
FEATURES

- For 1 bulb.
- Applicable panel size* : 5 to 15-inch
- With brightness control function (Pulse Wide Modulation mode).
- The high-voltage terminals and patterns are coated with silicone so as to avoid the defects caused by dust.
- It is a product conforming to RoHS directive.
- * The applicable panel size is for typical reference dimensions.

TEMPERATURE AND HUMIDITY RANGES

Temperature range (°C)	Operating	0 to +60
	Storage	-20 to +85
Humidity range(%RH)		95max. [Maximum wet-bulb temperature 38°C. No dew.]

SHAPES AND DIMENSIONS



Weight: 13.7g typ.

Dimensions in mm

*1 Substrate(PWB: Printed wiring board): Flame retardant material UL94V-0(FR-4 or CEM-3) t=1mm

*2 : High-voltage generator (The entire surface within a range of 45mm away from the end of the base in the output)

	Connector manufacturer's company and type	Symbol
1 Input connector	Molex Japan Co., Ltd. 53261-0571	CN1
2 Output connector	Japan Solderless Terminal Co., Ltd. SM02B-BHSS-1	CN2

TERMINAL NUMBERS AND FUNCTIONS

CN1

Terminal No.	Function	Symbol
CN1-1	Input voltage Edc: 4.75 to 5.25V/5V	V _{in}
CN1-2	0V	GND
CN1-3	Remote voltage Edc 0V: off/5 to 5.25V:on	V _{rmt}
CN1-4	Brightness dimmer voltage * Edc: 0 to 3V (Maximum brightness on 0V)	V _{br}
CN1-5	Used in the internal circuits, do not connect.	N.C.

* Brightness can be controlled by adjusting V_{br} within a range of 0 to 3V.

CN2

Terminal No.	Function	Symbol
CN2-1	Output [High voltage] I _{rms} 3 to 6mA	V _{HIGH}
CN2-2	—	N.C.
CN2-3	Output [Low voltage] (2V)	V _{Low}

- Conformity to RoHS Directive: This means that, in conformity with EU Directive 2002/95/EC, lead, cadmium, mercury, hexavalent chromium, and specific bromine-based flame retardants, PBB and PBDE, have not been used, except for exempted applications.

- All specifications are subject to change without notice.

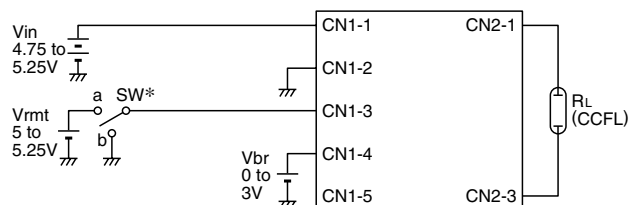
CXA-L0605-VSL

ELECTRICAL CHARACTERISTICS

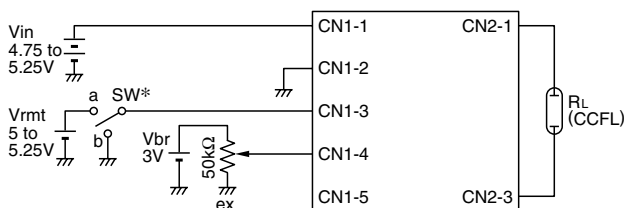
Item	Unit	Symbol	Specification			Condition		Ta(°C)	RL(kΩ)	Brightness
			min.	typ.	max.	Vin(V)	Vbr(V)			
Output current I _{rms}	mA	I _{out}	5.3	6	6.7	5±0.25	0	0 to +60	70 to 90	Maximum
			5.4	6	6.6	5±0.25	0	23±5	80	Maximum
			2.5	3	3.5	5±0.25	3	0 to +60	226	Minimum
Input current I _{dc}	A	I _{in}	—	0.7	0.8	5±0.25	0	0 to +60	70 to 90	
Oscillation frequency	kHz	FL	35	45	55	5±0.25	0	0 to +60	70 to 90	
Open circuit output voltage E _{rms}	kV	V _{open}	1.5	1.7	—	5±0.25	0	0 to +60	∞	

TYPICAL CONNECTIONS

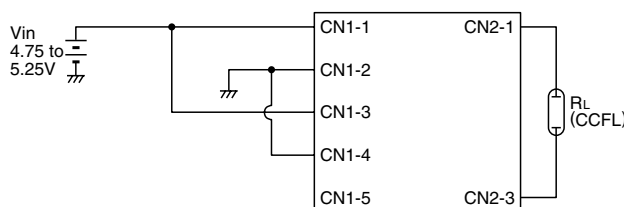
EXAMPLE OF VOLTAGE DIMMER CONTROL



EXAMPLE OF POTENTIOMETER DIMMER CONTROL



NO DIMMER CONTROL (BRIGHTNESS MAX.)



* SW a:on, b:off

