

MICRO SWITCH

FREEPORT ILLINOIS, U.S.A
A DIVISION OF HONEYWELL
FED. MFG. CODE 91929

SWITCH-BASIC

CATALOG LISTING
BA-2R-A4

ABF5000

BA-2R-A4
PAGE 1 OF 1

M

DRAWING
NUMBER

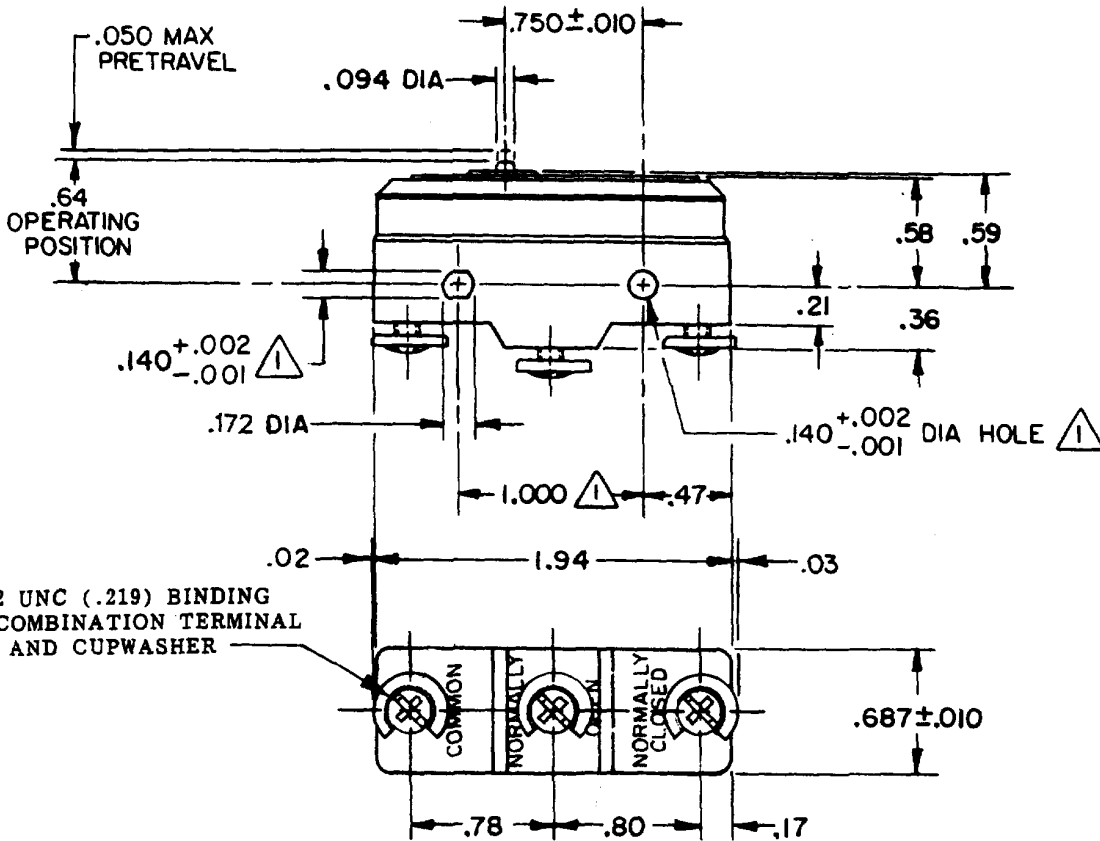
ISSUE
10

REVISIONS

A	08S DWG	
27	JUN 86	
B	PR-14878	
28	JUN 86	
C	CO88010	
29	JUN 89	
D	CO-73287-3	
20	OCT 93	
E	CO-77588	
28	MAR 94	
F	C093346	
23	SEP 98	
G	0018656	
	NM	
20	FEB 06	

FORMTEK
FO-52848-A

RELEASE NO. PR-14878 REPLACES
CHECK
20FEB06
RJ
CHECK
20FEB06
KAG
28 JUN 86
D T A D
28 JUN 86
DRAWN



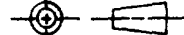
3X 8-32 UNC (.219) BINDING HEAD COMBINATION TERMINAL SCREW AND CUPWASHER

NOTES

- ① MOUNTING HOLES WILL ACCEPT PINS OR SCREWS OF .139 MAX DIA ON 1.000±.002 CENTERS

THIS DRAWING COVERS A PROPRIETARY ITEM AND IS THE PROPERTY OF MICRO SWITCH, A DIVISION OF HONEYWELL. THIS DRAWING IS NOT TO BE COPIED OR USED WITHOUT THE APPROVAL OF MICRO SWITCH.

THIRD ANGLE PROJECTION



CHARACTERISTICS

OPERATING FORCE - - - - - 14-22 OZ
 RELEASE FORCE - - - - - 10 OZ MIN
 DIFFERENTIAL TRAVEL - - - .0020-.0075
 OVERTRAVEL - - - - - .010 MIN

ELECTRICAL DATA

CONTACT ARRANGEMENT
S P D T

L145 20A 125, 250 OR 480 VAC
 10A 125 VAC "L"
 1 HP 125 VAC, 2 HP 250 VAC
 1/2A 125 VDC, 1/4A 250 VDC
 2A 600 VAC

L288
L308
L315

CE

20(3)A 250V ~ T85 5E4

SCALE FULL

DO NOT SCALE PRINT

TOLERANCES

APPLY TO DESIGN UNITS. CONVERSIONS ARE ONLY FOR REFERENCE. UNLESS NOTED, TOLERANCES ARE 2

	DES. UNITS	TOL. mm	DES. UNITS	TOL. mm/in
NO PLACES	X	12.00	X X	0.02/00
ONE PLACE	X.X	0.4/010	X X X	0.30/010
TWO PLACES	X.XX	0.10/000	X X X X	0.10/000
THREE PLACES	X.XXX		X X X X X	
ANGLES				

DESIGN UNITS METRIC US CUSTOMARY

WEIGHT .063 LB