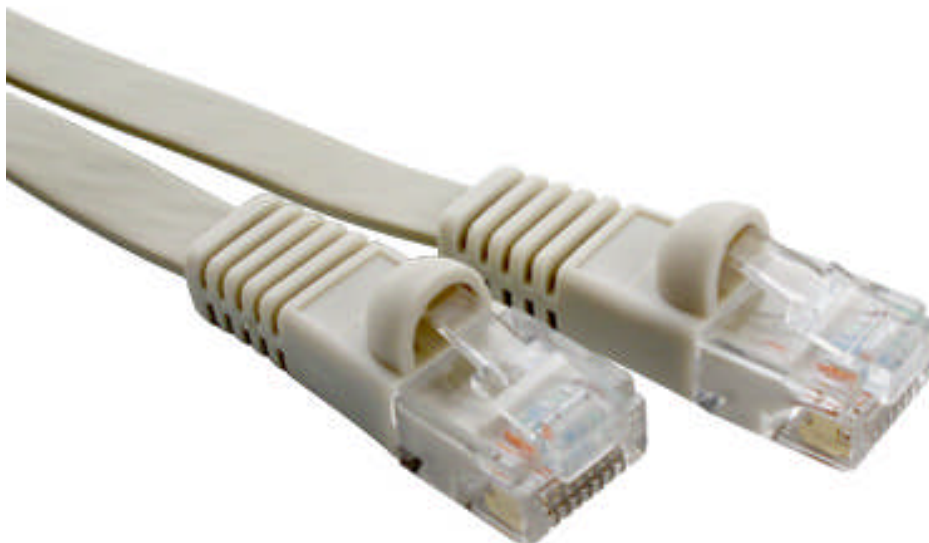


Flat Cat.6 UTP Patch Cables

The flat Cat.6 patch cables are high quality assemblies available in the list lengths only. Each assembly is manufactured to high specification and fully tested before shipment. The range is only available on beige in the listed lengths only.



Features

- New fully moulded assemblies available in beige
- Ideal low profile cables designed for tight cabinet spaces
- Manufactured using low profile connectors & flat Cat.5E approved cable
- Supplied in listed lengths and beige colour only
- Available in 0.3m, 0.5m, 0.75m, 1m, 1.25m, 1.5m, 1.75m, 2m, 3m, 5m, 8m, 10m, 15m, 20m & 30m options
- Fully tested for purpose