

Type 586

Type 586 SPDT



Sec.	STANCOR PART NUMBER	Duty Cycle	Terminal Type*	Pole Form	Bracket Style	Coil		Contact Material	Contact Rating-(Amps.) Inductive Load				DIMENSIONS INCHES			Weight (oz.)	Agency Certif.	
						Volt. D.C.	Resistance (Ohms) @25°C		Volt. D.C.	Normally Open Continuous	Normally Closed Continuous	Inrush**	Inrush**	L	Case W			H
A	586-901	Continuous	4	SPNO	Standard	6	5.3	Silver Alloy	6	200	600	-	-	3.69	3.30	2.90	24.0	-
	586-902	Continuous	4	SPNO	Standard	12	21.0	Silver Alloy	12	200	600	-	-	3.69	3.30	2.90	24.0	-
	586-903	Continuous	4	SPNO	Standard	15	32.8	Silver Alloy	15	200	600	-	-	3.69	3.30	2.90	24.0	-
B	586-905	Continuous	4	SPNO	Standard	24	84.0	Silver Alloy	24	200	600	-	-	3.69	3.30	2.90	24.0	-
	586-906	Continuous	4	SPNO	Standard	36	189.0	Silver Alloy	36	200	600	-	-	3.69	3.30	2.90	24.0	-
	586-907	Continuous	4	SPNO	Standard	48	336.0	Silver Alloy	36	200	600	-	-	3.69	3.30	2.90	24.0	-
C	586-911	Continuous	6	SPDT	Standard	12	13.2	Silver Alloy	12	200	600	100	300	4.61	3.30	2.90	26.0	-
	586-914	Continuous	6	SPDT	Standard	24	53.0	Silver Alloy	24	200	600	100	200	4.61	3.30	2.90	26.0	-
	586-915	Continuous	6	SPDT	Standard	36	120.0	Silver Alloy	36	200	600	100	200	4.61	3.30	2.90	26.0	-

— Water Resistant

* Terminal Type: "4" = Isolated Coil
"6" = Isolated Coil

** Inrush Current: Current applied within the first 1/2 second of contact closure

For outline drawings refer to page 97.

Engineering Design Data

D.C. Type	Coil Rating	Operation in % of Nom. Coil Rating		Breakdown Voltages All Terminals - 60 Hz RMS			Contact Material		Electrical Life		Mechanical Life		Max. Oper. Amb. °F
	Nominal Magnetic Coil Rating (Watts)	Pick-up	Max. Safe Operate	Opposite Polarity	Open Contacts Same Polarity	To Ground	Power	Pilot	Oper. At Rated Load	Oper. Per Min.	Oper. At No Load	Oper. Per Min.	
586	8 - SPNO 12 - SPDT	75%	110%	500	500	500	Silver Alloy	-	50,000	2	100,000	30	149

Temperature Range

— -40°F to 149°F

Terminations

— Contacts: 5/16"-24 UNF-2A thread
— Coil: #10-32 UNF-2A thread

Recommended Mounting

— Vertical plane with coil terminals up.

Hardware Torque Specification

— Contact Terminal: 60 inch-lbs., max.
— Coil Terminal: 12-18 inch lbs.

Type 586 Custom Design Capabilities

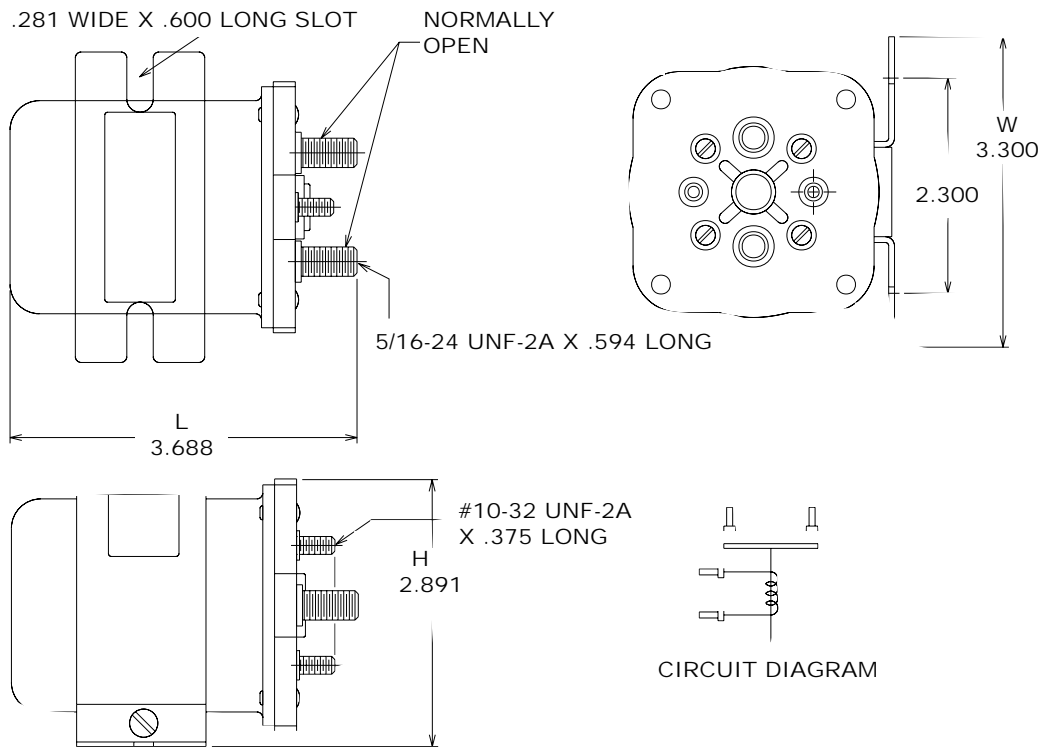
— Coil voltages 6 VDC through 48 VDC
— High vibration (consult factory)
— Gold plated contacts for pilot duty (low load switching) applications
— Please complete application data form on page 99 of this section.

Note: Caution must be used in coil selection for use in 12 volt systems where battery charging may expose coil to continuous, higher-than-rated voltage.

White-Rodgers will not be responsible for consequences of misapplied solenoids.

Errata Sheet - replaces page 96 in printed Stancor Product Catalog R-3982

Terminal Type 4 - Isolated Coil



Terminal Type 6 - Isolated Coil

