



MICRO SWITCH

FREEPORT, ILLINOIS, U.S.A.
A DIVISION OF HONEYWELL
FED. MFG. CODE 91229

SWITCH - BASIC

CATALOG LISTING
BZ-2RW8222-A2

BZ-2RW8222-A2
PAGE 1 OF 1
RELEASE NO. PR-1488
REPLACES

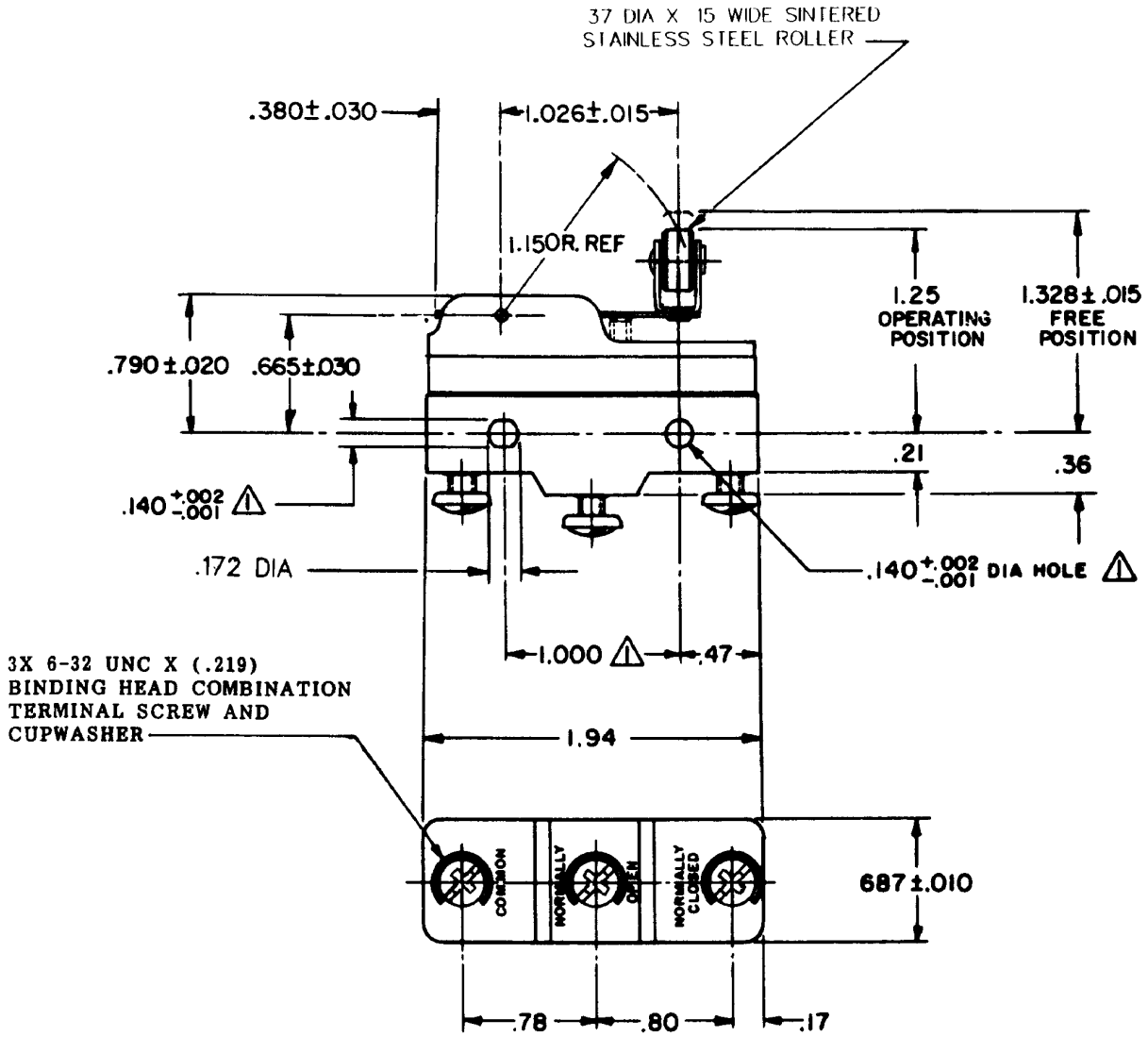
M
DRAWING NUMBER

ISSUE

REVISIONS

A	CORR	R J W	24 JULY 64
B	PR-1488	R E R	OCT 70
C	CO-73287-J	J A L	22 NOV 93
D	CO-75204B	J W B	1 FEB 94
E	CO-77589	T S M	29 MAR 94
F	CO-82922	L J K	26 MAR 96
G	CO93346	D L T	11 SEP 98

FORMTEK
FD-90378
DRAWN
R J W
24 JULY 64
CHECK
D A W
27 JULY 64
CHECK



NOTE
 ▲ MOUNTING HOLES WILL ACCEPT PINS OR SCREWS OF .139 MAX DIA ON 1.000 ± .002 CENTERS

THIS DRAWING COVERS A PROPRIETARY ITEM AND IS THE PROPERTY OF MICRO SWITCH, A DIVISION OF HONEYWELL THIS DRAWING IS NOT TO BE COPIED OR USED WITHOUT THE APPROVAL OF MICRO SWITCH.

CHARACTERISTICS	ELECTRICAL DATA	SCALE FULL
OPERATING FORCE --- 2 1/2 - 6 1/2 OZ	CONTACT ARRANGEMENT S P D T	DO NOT SCALE PRINT
RELEASE FORCE ----- 1 1/4 OZ MIN	UNDERWRITERS' LAB. INC. LISTED RATING -L96- 15A-125, 250, OR 480 VAC	UNLESS OTHERWISE NOTED DIMENSIONS ARE IN INCHES
DIFFERENTIAL TRAVEL ---- .003 - .020	1/2 A-125 VDC; 1/4 A-250 VDC	TOLERANCES ARE:
DO NOT OVERTRAVEL MORE THAN --- .141	1/8 HP-125 VAC; 1/4 HP-250 VAC	ONE PLACE (.0) ± .030
	-L288-	TWO PLACE (.00) ± .015
	-L299- 16A 250V ~ T85 5E4	THREE PLACE (.000) ± .005
	-L306-	ANGLES ± .005
		WEIGHT .060 LB