

MICRO SWITCH

FREERPORT ILLINOIS, U S A
A DIVISION OF HONEYWELL
FED. MFG. CODE 91929

SWITCH - BASIC

CATALOG LISTING

BZ-2RW82255T-S

M BZ-2RW82255T-S

PAGE 1 OF 1

REPLACES

RELEASE NO. PR-6725

DRAWING NUMBER

9

ISSUE

CHECK

REVISIONS

A	CO-39621	JAP	3 MAY 90
B	CO67209	JWB	18 JUL 91
C	CO-68351-D	JWB	18 JUL 91
D	CO-70184-H	CP	6 JUN 92
E	CO-75204B	DAW	1 FEB 94
F	CO-77588	KDR	29 MAR 94
G	CO-82886	JALA	23 APR 96
H	CO93346	DLT	17 SEP 98

CHECK

CHECK

CHECK

CHECK

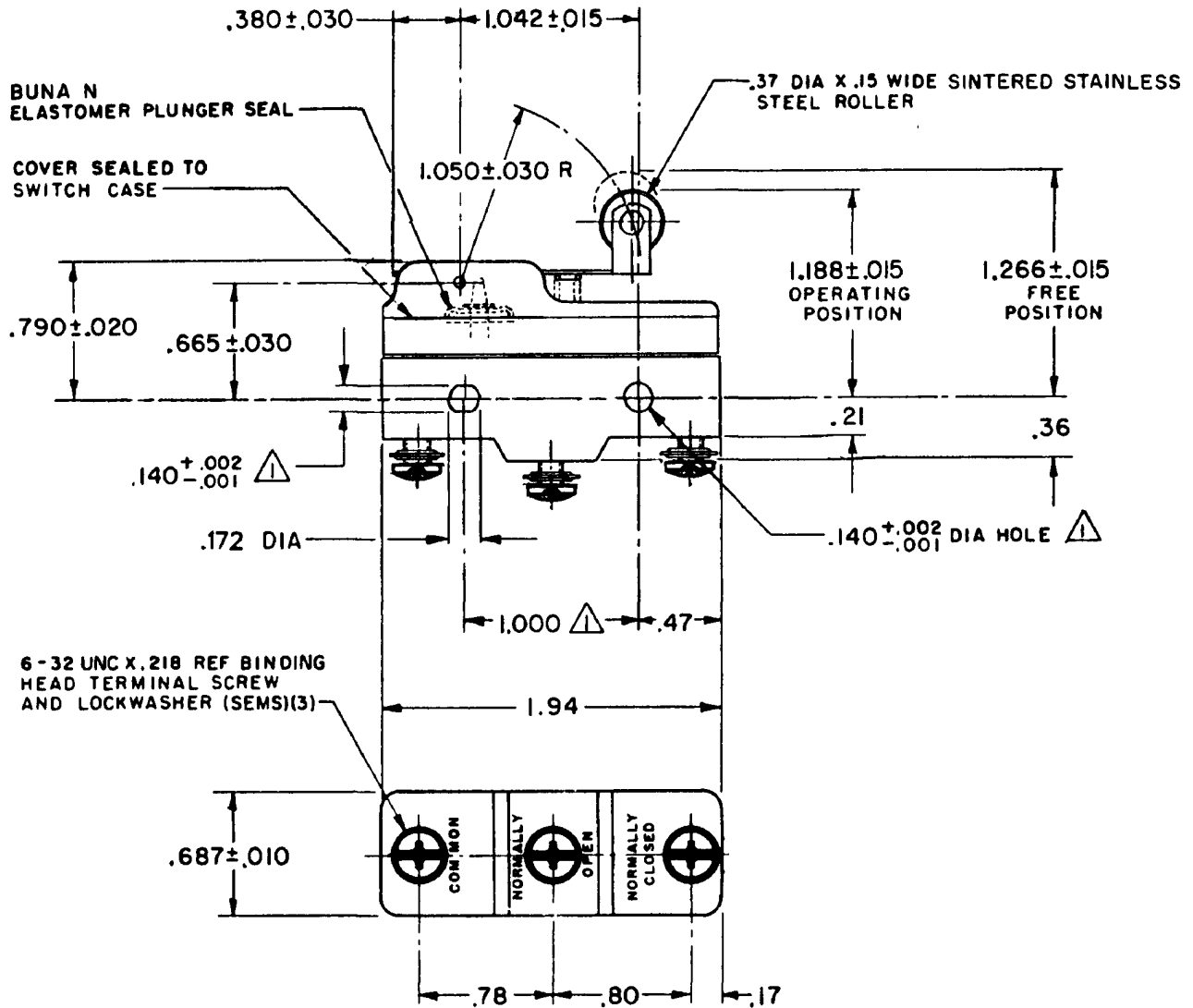
CHECK

CHECK

CHECK

CHECK

CHECK

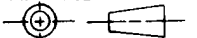


NOTES

- ▲ MOUNTING HOLES WILL ACCEPT PINS OR SCREWS OF .139 MAX DIA ON 1.000±.002 CENTERS
- 2 - SEALED CONSTRUCTION PROVIDES SPLASH RESISTANCE

THIS DRAWING COVERS A PROPRIETARY ITEM AND IS THE PROPERTY OF MICRO SWITCH, A DIVISION OF HONEYWELL. THIS DRAWING IS NOT TO BE COPIED OR USED WITHOUT THE APPROVAL OF MICRO SWITCH.

THIRD ANGLE PROJECTION



CHARACTERISTICS

OPERATING FORCE — — 6 OZ MAX
RELEASE FORCE — — 1 1/2 OZ MIN
DIFFERENTIAL TRAVEL — .003— .020
OVERTRAVEL — — — .094 MIN

ELECTRICAL DATA

CONTACT ARRANGEMENT
S P D T

L96
15A 125, 250 OR 480 VAC
1/8 HP 125 VAC, 1/4 HP 250 VAC
1/2A 125 VDC, 1/4A 250 VDC

L288
L299
L306



16A 250V ~ T85 5E4

SCALE FULL

DO NOT SCALE PRINT

TOLERANCES
APPLY TO DESIGN UNITS CONVERSIONS ARE ONLY FOR REFERENCE UNLESS NOTED TOLERANCES ARE ±

DIM.	TOL.	DIM.	TOL.
mm	mm/in	in	mm/in
NO PLACES	X	1/04	X X
ONE PLACE	X,X	0 4/018	X X X
TWO PLACES	X,XX	0 15/006	X X X X
THREE PLACES	X,XXX		X X X X X
ANGLES			

DESIGN UNITS SI METRIC US CUSTOMARY

WEIGHT .079

FORMTEK

FO-52848-A

DRAWN

T M M 12 OCT 77 CHECK GLH 17 OCT 77 CHECK