

Lily-SST50 reflector for Luminus SST50 LEDs

LUMINUS
www.luminus.com



- Specially designed for Luminus SST50 series of LEDs.
- Special care taken to make a uniform white or warm white illumination.
- Reflector is made of aluminum coated PC (120°C/248F) with protective laquer(110°C/230F)
- Best available optical efficiency over 90%.
- Compact dimensions, for more information please check drawing at the bottom page.
- Please check fastening details from this link:
(http://www.ledil.com/datasheets/DataSheet_GLUES.pdf)

LENS TYPES

NAME	ORDERING CODE	FWHM Angle
Lily-SST50 Spot	C10977_Lily-SST50-S	±10°
Lily-SST50 Medium	C10978_Lily-SST50-M	±15°
Lily-SST50 Wide	C10979_Lily-SST50-W	±22.5°

© Ledil Oy – PRELIMINARY - Subject to change without prior notice

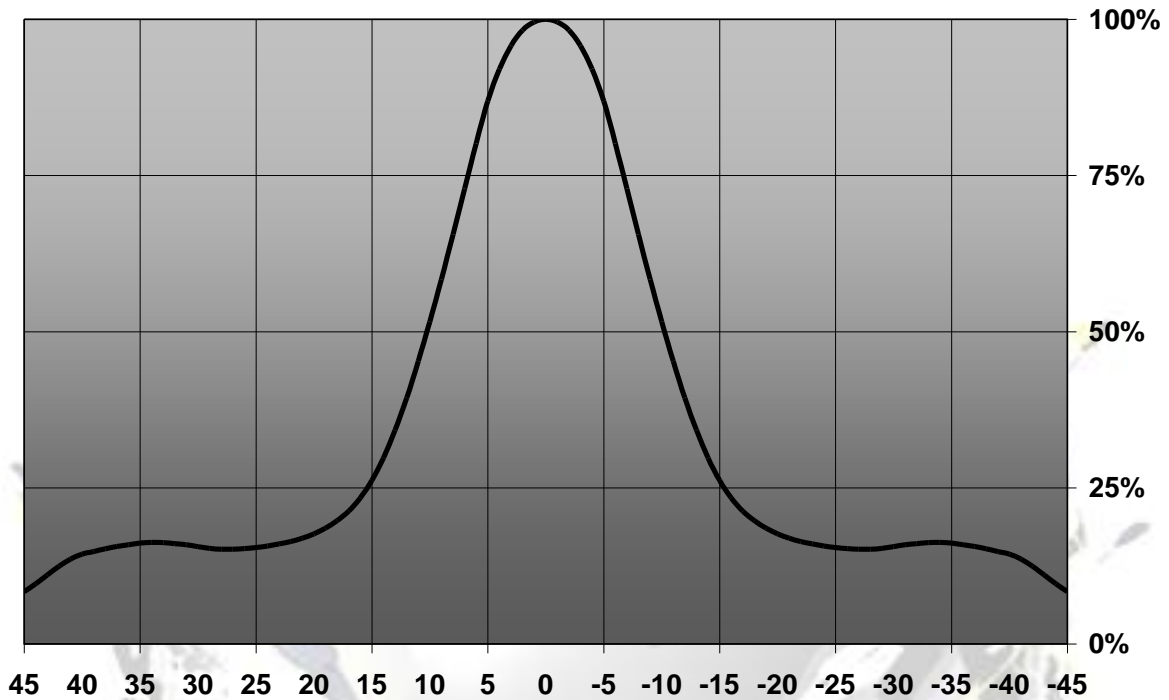
Ledil Oy
Tehdaskatu 13
FIN-24100 SALO, Finland

www.ledil.com
email: ledil@ledil.com
FAX: +358-2-733 8001

2011-05-30

MEASUREMENT DATA

Relative Intensity of C10977_Lily-SST50-S



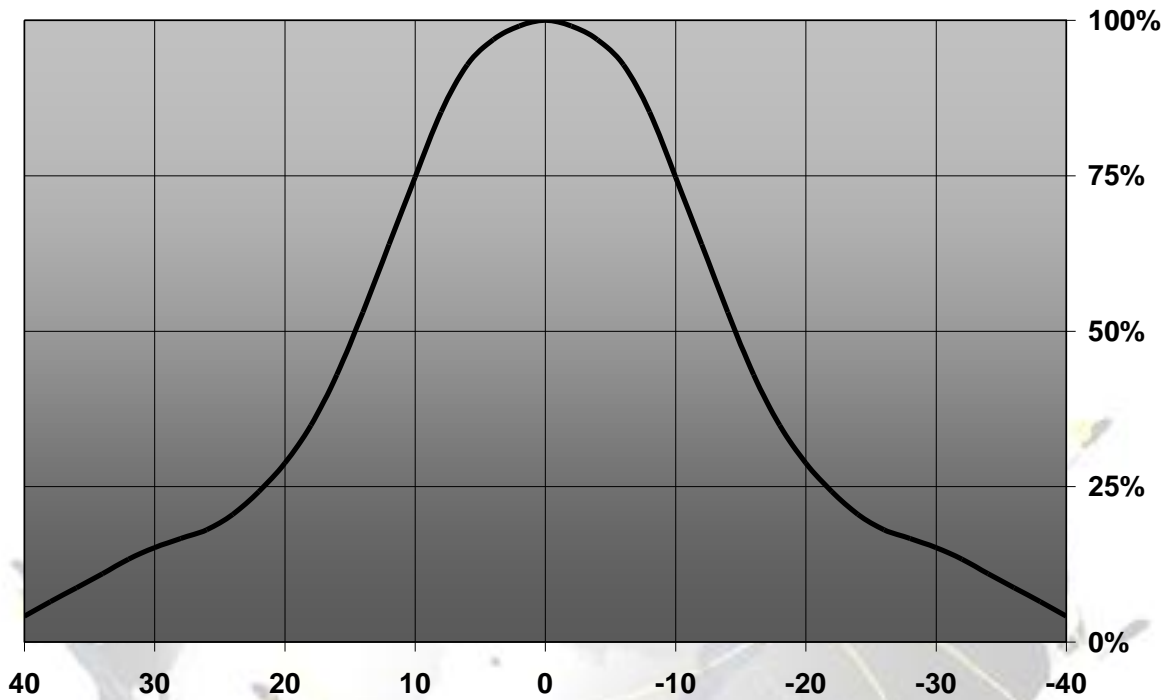
© Ledil Oy – PRELIMINARY - Subject to change without prior notice

Ledil Oy
 Tehdaskatu 13
 FIN-24100 SALO, Finland

www.ledil.com
 email: ledil@ledil.com
 FAX: +358-2-733 8001

2011-05-30

Relative Intensity of C10978_Lily-SST50-M



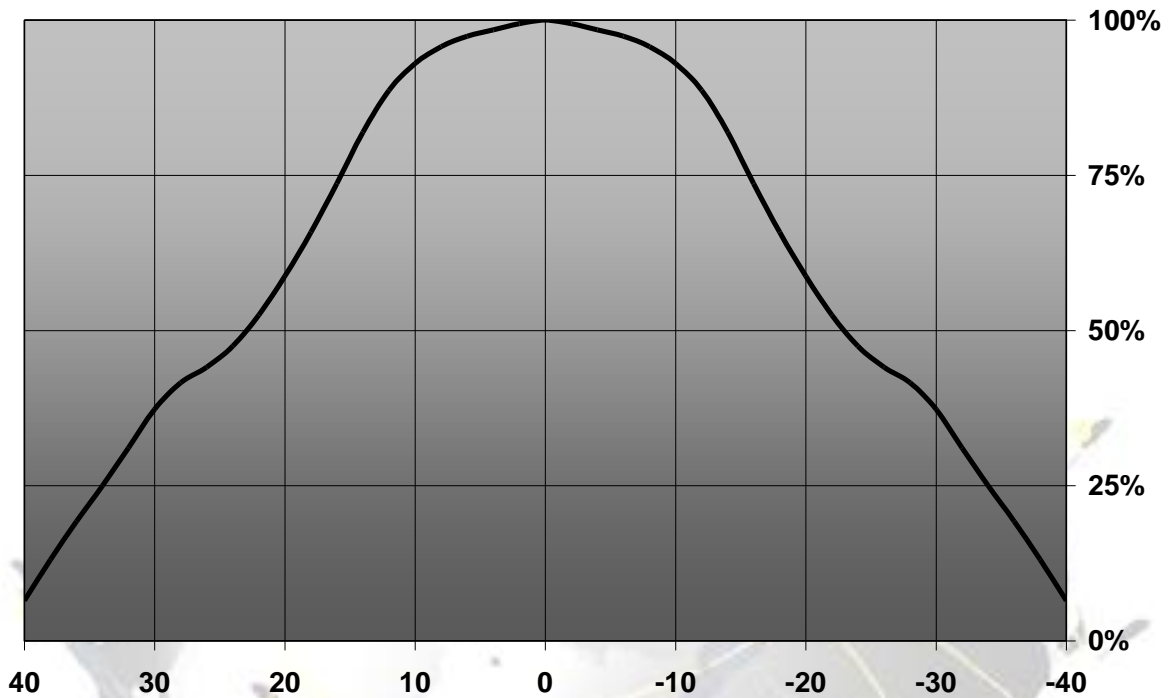
© Ledil Oy – PRELIMINARY - Subject to change without prior notice

Ledil Oy
 Tehdaskatu 13
 FIN-24100 SALO, Finland

www.ledil.com
 email: ledil@ledil.com
 FAX: +358-2-733 8001

2011-05-30

Relative Intensity of C10979_Lily-SST50-W



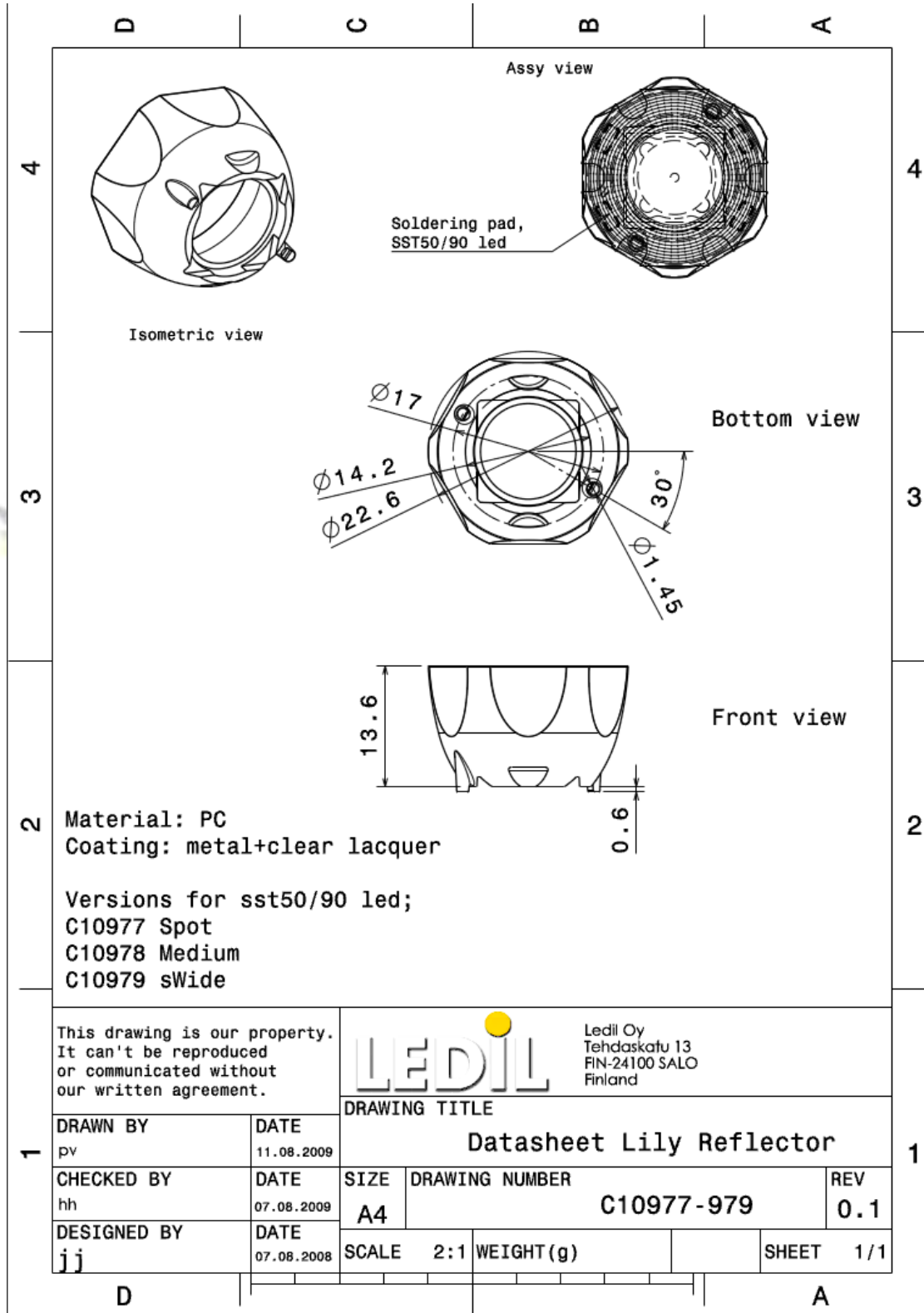
© Ledil Oy – PRELIMINARY - Subject to change without prior notice

Ledil Oy
Tehdaskatu 13
FIN-24100 SALO, Finland

www.ledil.com
email: ledil@ledil.com
FAX: +358-2-733 8001

2011-05-30

DRAWINGS



© Ledil Oy - PRELIMINARY - Subject to change without prior notice