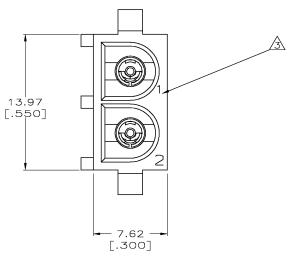
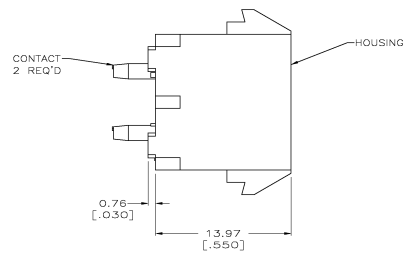
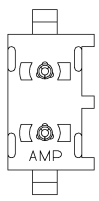
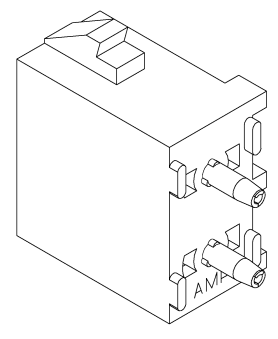


THIS DRAWING IS UNCLASSIFIED
 UNLESS INDICATED OTHERWISE
 ALL RIGHTS RESERVED

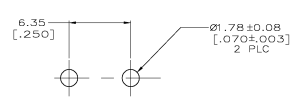
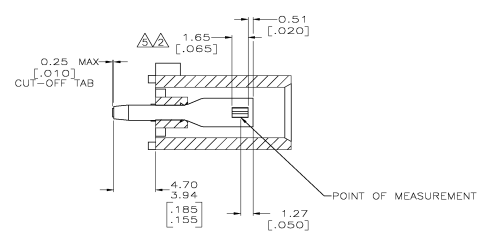
REV	DATE	DESCRIPTION	BY	CHK	APP
CM	00				
N		REVISED PER 0238-1094-04		26-AN05	KW SR



- PARTS COMPLY TO AMP SOLDERABILITY SPECIFICATION 109-11-3.
- CONTACT IS PLATED OVERALL WITH 0.00127 [0.00050] NICKEL, THEN 0.00076 [0.00030] GOLD OVER CONTACT LENGTH INDICATED AND MATTE TIN LEAD ON SOLDER TAIL END.
- CIRCUIT IDENTIFICATION CHARACTERS ARE ADJACENT TO THE INDICATED CAVITIES, BUT LOCATION AND ORIENTATION MAY DIFFER FROM PRINT.
- DIMENSIONS IN BRACKETS ARE IN INCHES.
- CONTACT IS PLATED OVERALL WITH 0.00127 [0.00050] NICKEL, THEN 0.00076 [0.00030] GOLD OVER CONTACT LENGTH INDICATED AND MATTE TIN ON SOLDER TAIL END.



3-DIMENSIONAL MODEL NTS



RECOMMENDED MOUNTING HOLE PATTERN FOR 1.57 [.062] THICK P.C. BOARD

PHOSPHOR BRONZE, GOLD	NYLON UL94V-0, WHITE	350824-4
PHOSPHOR BRONZE, GOLD	NYLON UL94V-0, WHITE	350824-2
PHOSPHOR BRONZE, PRE-TIN	NYLON UL94V-0, WHITE	350824-1
CONTACT MATERIAL AND FINISH	HOUSING MATERIAL	PART NUMBER



THIS DRAWING IS A CONTROLLED DOCUMENT:		REV	DATE	BY	CHK	APP
UNAPPROVED	APPROVED					
SIZE	UNIT	SCALE	DATE	BY	CHK	APP
A1	INCHES	1:1	02/19/18			
REV	DATE	BY	CHK	APP	CUSTOMER DRAWING	
					5.1	1 * 1

AMP 4402 REV 01/06/02