



JB10 Jumper Bars

Terminal Blocks Accessories



Features and Benefits

Facilitate & secure your jumper bar assembly process:

- Screwless mounting,
- Pre-cut poles for various circuits configurations,
- Insulated,
- Positive locking.

Main Technical Data

	IEC	cULus - CSA	Ex e
Rated current	76 A	67 A	
Rated voltage	Standard use 1000 V	600 V	630 V
	Cut extremities 800 V	300 V	Not authorized
	Cut poles 400 V	300 V	Not authorized
Impulse withstand voltage	6000 V		
Protection	IP 20	NEMA 1	

Mounting Instructions

Screwless

Tool
Torque

Material Specifications	Insulating material	Polyamide	
	Flammability	V0	
	NF F 16 101	I2F2	
Ambient temperature min/max	Service IEC 60068-2-1	-55 +110 °C	-67 +230 F
	Storage	-55 +110 °C	-67 +230 F
	Installing	-5 +40 °C	-23 +104 F

Ordering Details

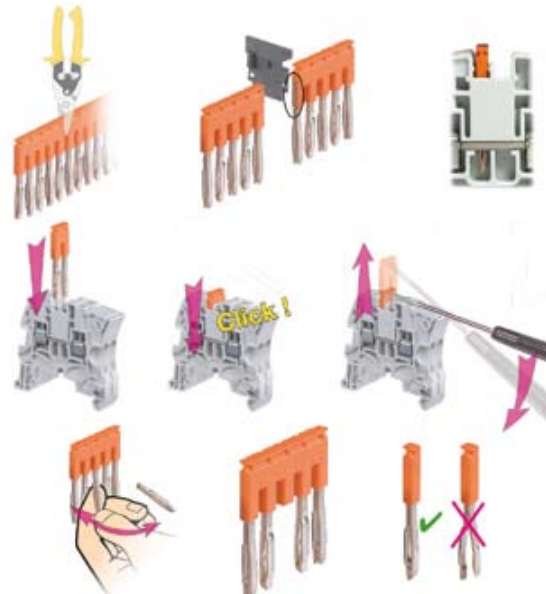
JB10 Jumper Bars

Description	Type	Order Code	Pack ^(n°) pieces	Weight g (1 pce)
10 mm 0.394 in spacing	2 poles	Orange ■ JB10-2	1SNK 910 302 R0000	50 4.60
	3 poles	JB10-3	1SNK 910 303 R0000	50 7.10
	4 poles	JB10-4	1SNK 910 304 R0000	40 9.40
	5 poles	JB10-5	1SNK 910 305 R0000	30 12.00
	10 poles	JB10-10	1SNK 910 310 R0000	20 24.00

JB10 Accessories

Description	Type	Order Code	Pack ^(n°) pieces	Weight g (1 pce)
1 Circuit Separators	Dark Grey ■ CS	1SNK 900 101 R0000	20	0.20

JB10 Mounting Instructions



Caution:
use of cut jumper bars is not allowed in Explosive atmospheres,

- Jumper bar with cut extremities: when mounted on feed-through or ground terminal blocks: the circuit separator CS must be installed on the cut side,
- Jumper bar with cut poles: for alternated jumpering between terminal blocks.