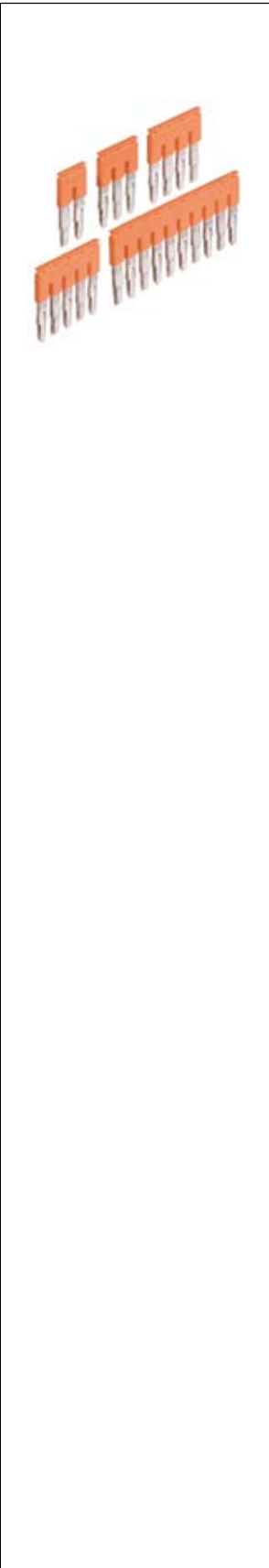




JB8 Jumper Bars

Terminal Blocks Accessories



Features and Benefits

Facilitate & secure your jumper bar assembly process:

- Screwless mounting,
- Pre-cut poles for various circuits configurations,
- Insulated,
- Positive locking.

Main Technical Data

| | IEC | cULus - CSA | Ex e |
|---------------------------|-----------------|-------------|-------|
| Rated current | 57 A | 42 A | |
| Rated voltage | Standard use | 1000 V | 600 V |
| | Cut extremities | 800 V | 300 V |
| | Cut poles | 400 V | 300 V |
| Impulse withstand voltage | 6000 V | | |
| Protection | IP 20 | NEMA 1 | |

Mounting Instructions

Screwless

| | |
|--------|--|
| Tool | |
| Torque | |

| Material Specifications | Insulating material | Polyamide | |
|-----------------------------|-----------------------|-------------|------------|
| | Flammability | V0 | |
| | NF F 16 101 | I2F2 | |
| Ambient temperature min/max | Service IEC 60068-2-1 | -55 +110 °C | -67 +230 F |
| | Storage | -55 +110 °C | -67 +230 F |
| | Installing | -5 +40 °C | -23 +104 F |

Ordering Details

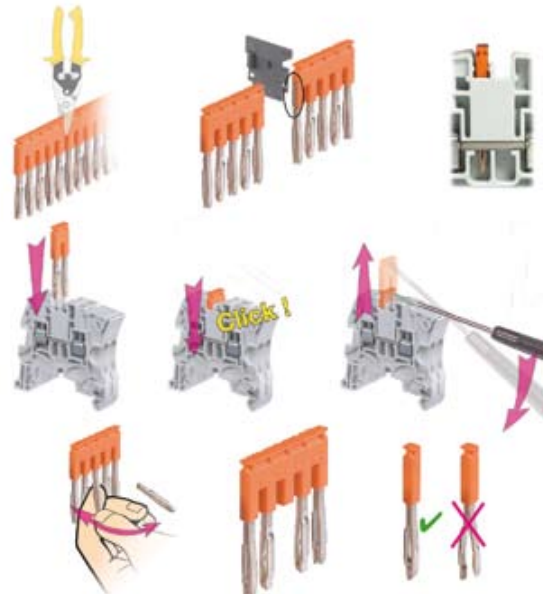
JB8 Jumper Bars

| Description | Type | Order Code | Pack ⁽¹⁰⁹⁾ pieces | Weight g (1 pce) |
|-----------------------|----------|-----------------------|------------------------------|------------------|
| 8 mm 0.315 in spacing | 2 poles | Orange ■ JB8-2 | 1SNK 908 302 R0000 | 50 2.70 |
| | 3 poles | JB8-3 | 1SNK 908 303 R0000 | 50 4.10 |
| | 4 poles | JB8-4 | 1SNK 908 304 R0000 | 50 5.60 |
| | 5 poles | JB8-5 | 1SNK 908 305 R0000 | 40 7.00 |
| | 10 poles | JB8-10 | 1SNK 908 310 R0000 | 20 14.20 |

JB8 Accessories

| Description | Type | Order Code | Pack ⁽¹⁰⁹⁾ pieces | Weight g (1 pce) |
|----------------------|-----------------------|---------------------------|------------------------------|------------------|
| 1 Circuit Separators | Dark Grey ■ CS | 1SNK 900 101 R0000 | 20 | 0.20 |

JB8 Mounting Instructions



Caution:
use of cut jumper bars is not allowed in Explosive atmospheres,

- Jumper bar with cut extremities: when mounted on feed-through or ground terminal blocks: the circuit separator CS must be installed on the cut side,
- Jumper bar with cut poles: for alternated jumpering between terminal blocks.