

Current refinements (click to remove)

[Search Tips](#) 
 [Region](#) **USA** [Product Family](#) **Male/Female Coupler, Nylon Fully Insulated – Funnel Entry** [Text Search](#): 'DNF14-250FIM-M'

Your search criteria matched only one product, shown below.



- Disconnect can be inserted and removed from the male tab without the use of tools for lower installed cost
- Fully insulated design provides protection from electrical shorts
- Metal insulation grip sleeve crimps to wire insulation, providing protection to the crimp joint during high vibration applications
- Internal barrel serrations assure good wire contact and maximum tensile strength
- Internal wire stop assures proper length of insertion into terminal barrel, providing a higher quality connection
- UL Flammability UL 94V-2/HB, maximum insulation temperature 221° F (105°C)
- Coupler, male, and female parts sold separately

Related Products

- [Female Disconnect, Nylon Fully Insu...](#)
- [Female Disconnect, Nylon Fully Insu...](#)
- [DiscoGrip™ Male Discon...](#)
- [Hand Operated Plier Type Tools](#)
- [Pneumatic Crimping Tool](#)
- [Contour Crimp™ Control...](#)

Part Number:	DNF14-250FIM-M
RoHS Compliancy Status:	Compliant
Part Description:	Male Disconnect, nylon fully insulated, 16 – 14 AWG, .250 x .032 tab size.
Product Type:	Disconnects
CSA Certified:	Yes
UL Listed:	Yes
Height (In.):	.27
Length (In.):	.90
Width (In.):	.42
Max. Ins.:	.158
Panduit Color Code:	Blue
Tab Size (In.):	.250 x .032
Tool:	CT-600-A, CT-1525‡CT-100, CT-600-A, CT-1525‡, CT-2500‡
Type:	Male
Wire Range:	16 – 14 AWG
Min. Order UOM:	PC
Min. Order Qty.:	1000

BOM Qty. (# of Pkgs.)

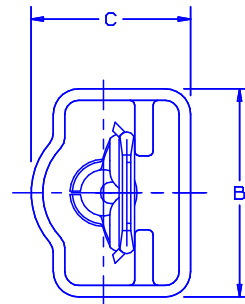
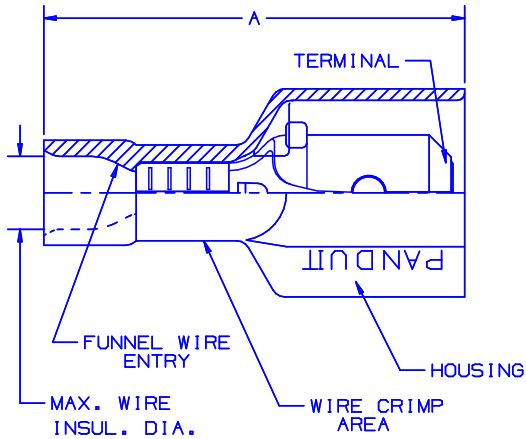
[Add to My Catalog](#)

 Please [register](#) to utilize the 'Bill of Materials', 'Submit Quotes' and 'My Catalog' features.

THIS COPY IS PROVIDED ON A RESTRICTED BASIS AND IS NOT TO BE USED IN ANY WAY DETRIMENTAL TO THE INTERESTS OF PANDUIT CORP.

NOTES:

1. UL LISTED AND CSA CERTIFIED FOR:
 - A. 600V MAX. VOLTAGE RATING.
 - B. 221°F (105°C) MAX. TEMP. RATING (CSA).
 - C. 257°F (125°C) MAX. TEMP. RATING (UL).
 - D. STRANDED COPPER WIRE ONLY.




2. MATERIAL:
 - A. STAMPING-CDA 260 BRASS, NICKEL PLATED
 - B. HOUSING-TYPE 6/6 NYLON
3. DIMENSIONS IN BRACKETS ARE IN mm OR mm²
4. COLORS ARE TRANSLUCENT
5. WIRE STRIP LENGTH: 9/32 ^{+1/32}₀ (7.1 ^{+0.8}₀)
6. PACKAGE QTY -C=100
-M=1000

PART NUMBER	TAB SIZE	WIRE RANGE AWG	COLOR (note 4)	MAX. INSUL.	DIMENSIONS in			CRIMP TOOLS
					A ±.03	B ±.02	C ±.02	
DNF18-250F1M	.250 X .032 (6.3 X 0.8)	22-18 (0.5-1.5)	RED	.133 (3.38)	.90 (22.9)	.42 (10.7)	.27 (6.9)	CT-520 CT-1525
DNF14-250F1M	.250 X .032 (6.3 X 0.8)	16-14 (1.5-2.5)	BLUE	.158 (4.01)	.90 (22.9)	.42 (10.7)	.27 (6.9)	



A41325_07

07	7/03	KLFU		ADDED INTERNAL SERRATIONS				 TINLEY PARK, ILLINOIS LOOSE PC. FULLY INSULATED MALE DISCONNECT .250 X .032
06	2/01	KMD	JAC	DRAWING NUMBER WAS 41325A	09052	TRO	JAC	
05	5/98	TM	RS	ADDED CT-1525 TO TOOL CHART, WAS TIN PLATED	06872			
04	10/94	TH	RS	UPDATED NOTES AND DIMENSIONS	02553	TK	LA	
REV	DATE	BY	CHK	DESCRIPTION	ECN #	PM	CUST	DRAWN BY JV CHK'D LM SCALE  DRAWING NO. A41325