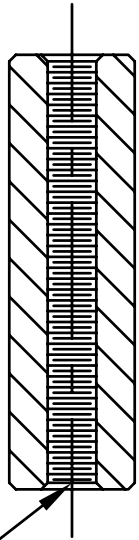
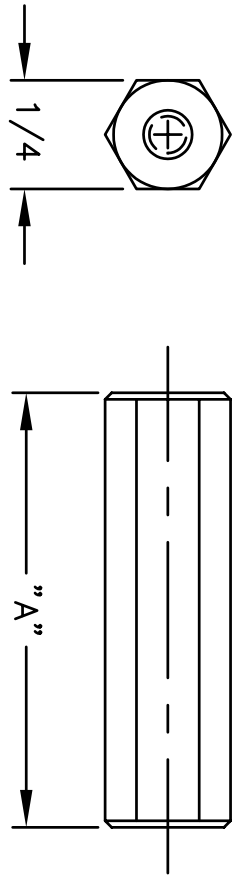


REVISIONS			
SYM	DESCRIPTION	REVISED BY	DATE APPR

PART #	"A"	THD "B"
4300	.250	4-40
4300J	.625	4-40
4301	.250	6-32
4301J	.625	6-32
4302	.250	8-32
4303	.375	4-40
4304	.375	6-32
4305	.375	8-32
4306	.500	4-40
4307	.500	6-32
4308	.500	8-32
4309	.750	4-40
4310	.750	6-32
4311	.750	8-32
4312	.875	4-40
4313	.875	6-32
4314	.875	8-32
4315	1.000	4-40
4316	1.000	6-32
4317	1.000	8-32



NOTE: STANDOFFS 3/4" & LONGER, THD IS TAPPED 3/8" FROM EACH END & IS NON-CONTINUOUS

MATERIAL: NYLON 6/6		FINISH: NATURAL	
DIMENSIONAL TOLERANCES UNLESS OTHERWISE SPECIFIED		TITLE: 1/4" HEX	
.XX	.XXX	NYLON STANDOFF #4, #6, #8 THREADS	
---	---	CUSTOMER SALES DRAWING	
FRACTIONS	ANGLES	SCALE	
---	---	2:1	
HEAT TREAT:	CODE 0	DRAWN: T. LORD	DATE: 4/4/11
PLLOT SCALE:	1:1	CHECKED: T. LORD	DATE: 4/4/11
		APPROVED: T. LORD	DATE: 4/4/11
<p style="text-align: center;">ABBATRON</p> <p style="text-align: center;">Electronic Connectors and Hardware</p> <p style="text-align: center;">13680 S. MOSIERTOWN RD MEADVILLE, PA 16335</p>		SIZE: A	DRAWING NUMBER: SD: 4300-4317
		ISSUE: -	