

ALL DIMENSIONS ARE  
FOR REFERENCE ONLY

DIMENSIONS ARE IN INCHES [MILLIMETERS]  
UNLESS OTHERWISE NOTED

PRODUCT SPECIFICATION SHEET			DWG NO	717-TAB SP
REVISIONS			TITLE	
REV	ECO	DESCRIPTION	BY/DATE	APPROVED
A		INITIAL RELEASE	IB 29 MAR 96	
B	1221	CHANGE NOTE 3. FROM POLYCARBONATE AND BLACK NOREL	TC 18 MAY 01	

SPECIFICATIONS

OVERALL HEIGHT .....  $\Delta$  SEE TABLE  
 SHIPPING WEIGHT .....  $\Delta$  SEE TABLE  
 COLOR ..... BLACK

MATERIAL:

- 1. HEAD PLATE ..... NYLON 6,  
30% GLASS FILLED
- 2. PIVOT BALL HOUSING ..... ZINC DIE CAST  
PAINTED BLACK
- 3. EXTENSION ..... 6061-T6 ALUMINUM  
BLACK ANODIZED
- 4. BASE PLATE ..... NYLON 6,  
40% GLASS FILLED
- 5. KNOB (2 EA) ..... ZINC DIE CASTING  
PAINTED BLACK  
1/4-28 X 7/8  
STEEL SOCKET SCREW  
BLACK OXIDE

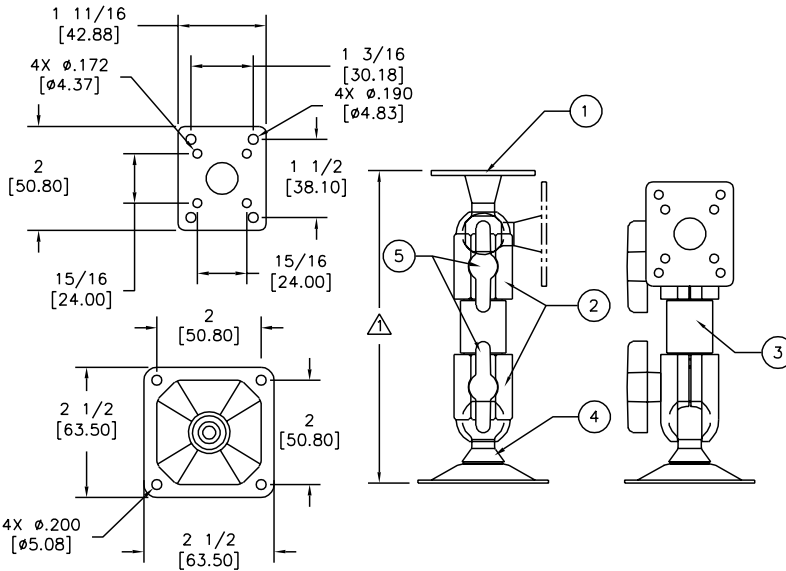


TABLE		
PART NUMBER	$\Delta$ OVERALL HEIGHT (RISE)	$\Delta$ WEIGHT
717-06	6 INCH [152.4 MM]	.64 LB [.29 KG]
717-09	9 INCH [228.6 MM]	.72 LB [.33 KG]

ALL DESIGN, OPERATIVE, AND PROCESS DATA PERTAINING TO THE ARTICLE ON THIS SHEET IS THE PROPERTY OF PANAVISE PRODUCTS, INC., RENO, NV. THIS INFORMATION IS DISCLOSED IN CONFIDENCE AND IS NOT TO BE COPIED, REPRODUCED, OR REVEALED TO OR APPROPRIATED BY OTHERS, IN PART OR IN WHOLE, WITHOUT THE EXPRESSED CONSENT OF PANAVISE. THIS PRINT IS LOANED, AND MUST NOT BE USED IN ANY MANNER DETRIMENTAL TO THE INTEREST OF PANAVISE, AND MUST BE RETURNED ON DEMAND



**PANAVISE®**  
7540 Colbert Drive, Reno, Nevada 89511-1225  
Phone (702) 850-2900, Fax (702) 850-2929

TITLE  
SLIMLINE 2000  
PHONE MOUNT MODEL 717

BASIC DIM. ENGLISH [ALTERNATE DIM. METRIC]

DRAWN	DATE	SCALE	SIZE	DWG. NO.	REV
I BENNETT	MAR 96	NONE	SHT 1 OF 1	717-TAB SP	B

SIZE	DWG. NO.	REV
A	717-TAB SP	B