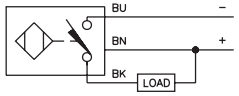
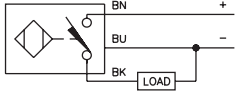
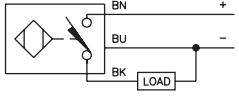
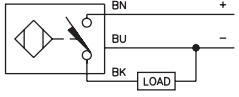
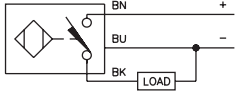
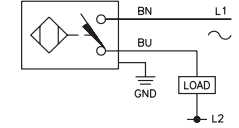
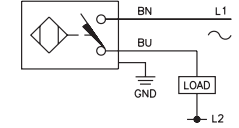


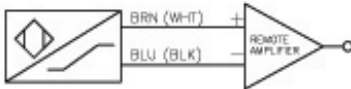
Inductive Sensors



Housing Style	Part Number	ID Number	Features	Sensing Range (mm)	Output
30 mm - Nonembeddable, Potted-In Cable 	Ni 15-G30K-AN6X	T4671700	Short Barrel	15	3-Wire DC NPN
	Ni 15-G30K-AP6X	T4670700	Short Barrel	15	3-Wire DC PNP
	Ni 15-G30-Y0 Ni 15-G30-Y0X	T1006300 T4020100		15 15	2-Wire DC NAMUR
30 mm - Nonembeddable, Potted-In Cable 	Ni 15-G30-AN6X Ni 15-G30-AN7X	T4647700 T1714900		15 15	3-Wire DC NPN
	Ni 15-G30-AP6X	T4647600		15	3-Wire DC PNP
	Ni 20-G30-ADZ30X2	T4205404		20	2-Wire AC/DC Short-Circuit Protected
	Ni 15-G30-AZ3X	T1306000		15	2-Wire AC/DC

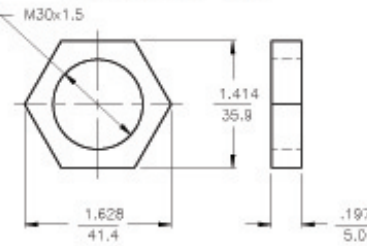
Voltage	Switching Freq. (Hz)	Operating Current AC/DC (mA)	Operating Temp. (°C)	Protection	Housing	Face	End Cap	Power LED	Output LED	Cable Length/ Cable /Mat.	Wiring Diagram #	Wiring Diagrams
10-30 VDC	500	≤200	-25 to +70	IP 67	CPB	PA 12	EPTR	N/A	YE	2M/PVC	1	<p>Diagram 1</p> 
10-30 VDC	500	≤200	-25 to +70	IP 67	CPB	PA 12	EPTR	N/A	YE	2M/PVC	2	<p>Diagram 2</p> 
5-30 VDC	200	Remote	-25 to +70	IP 67	CPB	PA 12	EPTR	N/A	N/A	2M/PVC	3	<p>Diagram 3</p> 
	200	Remote	-25 to +70	IP 67	CPB	PA 12	EPTR	N/A	YE	2M/PVC	3	
10-30 VDC	500	≤200	-25 to +70	IP 67	CPB	PA 12	EPTR	N/A	YE	2M/PVC	1	<p>Diagram 3</p> 
	500	≤200	-25 to +70	IP 67	CPB	PA 12	EPTR	N/A	YE	2M/PVC	1	
10-30 VDC	500	≤200	-25 to +70	IP 67	CPB	PA 12	EPTR	N/A	YE	2M/PVC	2	 <p>Remote Amplifier</p>
20-250 VAC 10-300 VDC	20	≤400/300	-25 to +70	IP 67	CPB	PA 12	EPTR	GN	RD	2M/PVC	4	<p>Diagram 4</p> 
20-250 VAC 10-300 VDC	20	≤400/300	-25 to +70	IP 67	CPB	PA 12	EPTR	N/A	RD	2M/PVC	4	

WIRING DIAGRAM



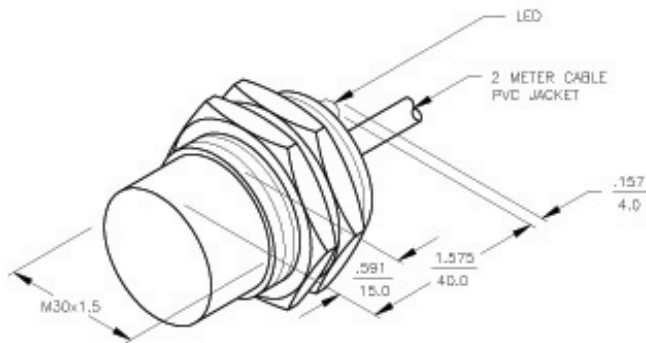
OUTPUT: Y0

LOCKNUT LN-M30



SPECIFICATIONS

OPERATING VOLTAGE	5-15 VDC
HYSTERESIS (DIFFERENTIAL TRAVEL)	1-10% (5% TYPICAL)
NOMINAL VOLTAGE	8.2 VDC
OUTPUT FUNCTION	RESISTANCE CHANGE, REQUIRES REMOTE AMPLIFIER
RESISTANCE CHANGE FROM NONACTVATED TO ACTIVATED CONDITION	1.0 kΩ to >8.0 kΩ
RESULTING CURRENT CHANGE	≤ 2.2 mA to ≤ 1.0 mA
RECOMMENDED SWITCHING POINT FOR REMOTE AMPLIFIER	1.55 mA
TIME DELAY BEFORE AVAILABILITY	≤ 5 ms
POWER-ON EFFECT PROTECTION	REALIZED IN AMPLIFIER
POLARITY INVERSION PROTECTION	INCORPORATED
WIRE BREAK PROTECTION	REALIZED IN AMPLIFIER
PROTECTION AGAINST TRANSIENTS	REALIZED IN AMPLIFIER
OPERATING TEMPERATURE	-25°C to +70°C (-13°F to +158°F)
ENCLOSURE	MEETS NEMA 1, 3, 4, 6, 13 AND IEC IP67
SHOCK	30 g, 11 ms
VIBRATION	55 Hz, 1 mm AMPITUDE (IN ALL 3 PLANES)
LED FUNCTION	RED: OUTPUT ENERGIZED
SENSING RANGE	15 mm = .591" (NOMINAL)
SWITCHING FREQUENCY	200 Hz
REPEATABILITY	≤ 2% OF NOMINAL SENSING RANGE
SHIELDED	NO



RELATED DOCUMENTS 1. 2. 3. 4.	3RD ANGLE PROJECTION 	THIS DRAWING IS PROPERTY OF TURCK INC. USE OF THIS DOCUMENT WITHOUT WRITTEN PERMISSION IS PROHIBITED.		TURCK INC High Technology Sensors and Automation Controls	
MATERIAL BRASS BARREL	TOLERANCES UNLESS OTHERWISE SPECIFIED .X ±0.02 .XX ±0.01 .XXX ±0.005 ANGLES ±1° ALL MILLIMETER DIMENSIONS ARE REFERENCE ONLY	DWPT RJP USDR	DATE 1/27/93 SCALE NONE	DESCRIPTION NI15-G30-Y0X	
FINISH COPPER/NICKEL/ CHROME PLATING		UNIT OF MEASUREMENT INCH [MILLIMETER]		IDENTIFICATION NO. T4020100	REV B
REV DESCRIPTION	RDS 01/21/03 10154	DO NOT SCALE THIS DRAWING		FILE: T4020100	SHEET 1 OF 1