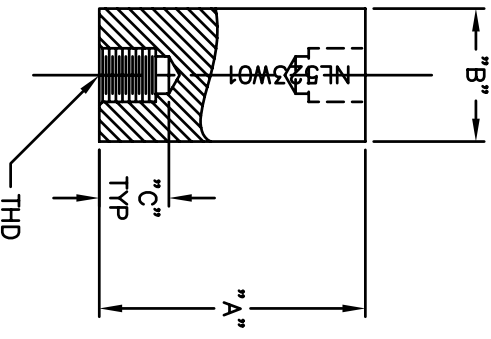


REVISIONS		REVISED	DATE	APPR
SYM	DESCRIPTION			

PART#	MIL TYPE #	"A"	"B"	"C"	THD
2600	NL523W01-004	1/2	3/8	5/32	6-32
2601	NL523W01-005	5/8	3/8	3/16	6-32
2602	NL523W01-006	3/4	3/8	1/4	6-32
2603	NL523W01-008	1	3/8	3/8	6-32
2604	NL523W01-010	1-1/4	3/8	3/8	6-32
2605	NL523W01-012	1-1/2	3/8	3/8	6-32
2606	NL523W01-016	2	3/8	3/8	6-32
2607	NL523W02-005	5/8	1/2	3/16	8-32
2608	NL523W02-006	3/4	1/2	1/4	8-32
2609	NL523W02-008	1	1/2	3/8	8-32
2610	NL523W02-0010	1-1/4	1/2	3/8	8-32
2611	NL523W02-012	1-1/2	1/2	3/8	8-32
2612	NL523W02-016	2	1/2	3/8	8-32
2613	NL523W02-020	2-1/2	1/2	3/8	8-32
2614	NL523W02-024	3	1/2	3/8	8-32
2615	NL523W03-008	1	3/4	3/8	10-32
2616	NL523W03-010	1-1/4	3/4	3/8	10-32
2617	NL523W03-012	1-1/2	3/4	3/8	10-32
2618	NL523W03-016	2	3/4	3/8	10-32
2619	NL523W03-020	2-1/2	3/4	3/8	10-32
2620	NL523W03-024	3	3/4	3/8	10-32
2621	NL523W03-032	4	3/4	3/8	10-32
2622	NL523W04-010	1-1/4	1	7/16	1/4-20
2623	NL523W04-012	1-1/2	1	1/2	1/4-20
2624	NL523W04-016	2	1	5/8	1/4-20
2625	NL523W04-020	2-1/2	1	5/8	1/4-20
2626	NL523W04-024	3	1	5/8	1/4-20
2627	NL523W04-032	4	1	5/8	1/4-20
2628	NL523W04-040	5	1	5/8	1/4-20
2629	NL523W04-048	6	1	5/8	1/4-20



NOTE:  
 INSULATORS TO BE MANUFACTURED IN ACCORDANCE WITH MIL-I-23264. MIL TYPE # TO BE PRINTED ON THE SIDE, UNDER THE GLAZE, IN 1/8" HIGH LETTERS. IF THE STANDOFF IS TOO SHORT TO PRINT LENGTHWISE, THEN THE NUMBER CAN BE PRINTED AROUND THE CIRCUMFERENCE.

MATERIAL: L5 STEATITE PER MIL-I-10		FINISH: GLAZED PER MIL-I-10	
DIMENSIONAL TOLERANCES UNLESS OTHERWISE SPECIFIED		TITLE: 2600-2629	
XX	XXX	CERAMIC STANDOFFS	
---	---	DRAWN: T. LORD DATE: 9/26/05	
FRACTIONS	ANGLES	CHECKED: T. LORD DATE: 9/26/05	
---	---	APPROVED: T. LORD DATE: 9/26/05	
HEAT TREAT: ---		SIZE: B	DRAWING NUMBER: SD: 2600-2629
PLOT SCALE: 1=1		ISSUE: D	

**ABBATRON**  
 Electronic Connectors and Hardware  
 632 Arch Street, Meadville, Pa. 16334