

Series image - Reference only

EU RoHS

RoHS Compliant by Exemption

China RoHS



Search Parts in this Series

88744 Series

Mates With

74320 MicroCross™ DVI-I Digital/Analog Visual Interface, PCB Receptacle

Part Number: **0887418011**

Status: **Active** **Overview:** MicroCross™ DVI

Description: MicroCross™ DVI Digital Visual Interface, Shielded I/O Cable Assembly: DVI-Digital to DVI-Digital, Single Link TMDS, White, 3.0m (9.84') Length

General

Product Family	Cable Assemblies
Series	<u>88744</u>
Comments	Single Link TMDS
Connector to Connector	DVI-Digital to DVI-Digital
Obsolete Date	2003-01-01
Overview	<u>MicroCross™ DVI</u>
Product Name	MicroCross™DVI

Physical

Cable Length	3.0m (9.84')
Circuits (Loaded)	24
Color - Resin	Black
Gender	Plug/Plug
Lock to Mating Part	None
Material - Metal	Phosphor Bronze
Material - Plating Mating	Gold
Material - Plating Termination	Tin
Material - Resin	Polyester
Packaging Type	Bag
Pitch - Mating Interface (in)	0.075 In
Pitch - Mating Interface (mm)	1.90 mm
Plating min: Mating (uin)	10
Plating min: Mating (um)	0.25
Plating min: Termination (uin)	150
Plating min: Termination (um)	3.75
Single Ended	No

Termination Interface: Style	Solder or Weld
Wire Insulation Diameter	N/A
Wire Size AWG	N/A
Wire/Cable Type	N/A

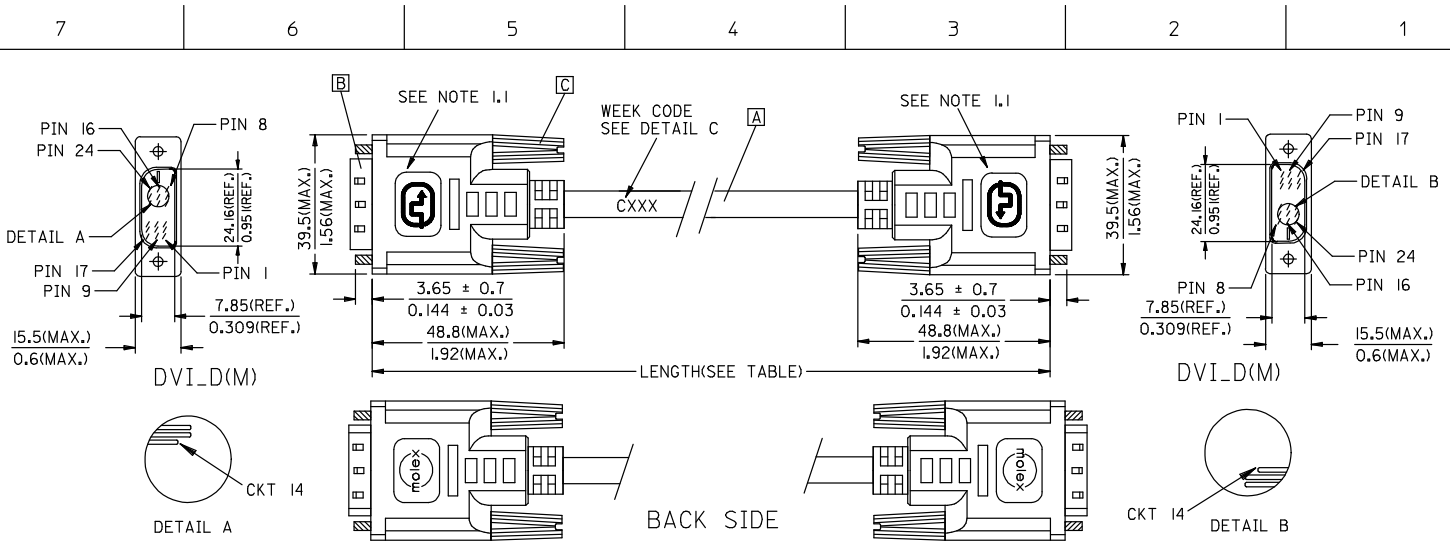
Electrical

Current - Maximum	3.000 Amp
Shielded	Yes

Material Info

Reference - Drawing Numbers

Sales Drawing	SD-88741-001
---------------	--------------



CXXX
 WEEK NO. FOR YEAR.
 YEAR NO.
 C FOR MOLEX CHINA
 DETAIL C

8874I-802I	DVI_D-DVI_D SINGLE LINK CABLE 5M PARCHMENT WHT	5000 ± 150 196.9 ± 5.9	PARCHMENT WHITE	887808287
8874I-801I	DVI_D-DVI_D SINGLE LINK CABLE 3M PARCHMENT WHT	3000 ± 80 118.1 ± 3.1	PARCHMENT WHITE	887808287
8874I-800I	DVI_D-DVI_D SINGLE LINK CABLE 2M PARCHMENT WHT	2000 ± 60 78.7 ± 2.4	PARCHMENT WHITE	887808287
8874I-8020	DVI_D-DVI_D SINGLE LINK CABLE 5M BLK	5000 ± 150 196.9 ± 5.9	BLACK	887808276
8874I-8010	DVI_D-DVI_D SINGLE LINK CABLE 3M BLK	3000 ± 80 118.1 ± 3.1	BLACK	887808276
8874I-8000	DVI_D-DVI_D SINGLE LINK CABLE 2M BLK	2000 ± 60 78.7 ± 2.4	BLACK	887808276
MX P/N	DESCRIPTION	LENGTH	CABLE COLOR	CABLE P/N

ENTER DESCRIPTION EC NO: DG2006-0186 DRW: PDAI CHKD: CHYK APPR: TIAN 2006/03/09 2006/03/09 2006/03/10	QUALITY SYMBOLS ▽=0 ▽=0	GENERAL TOLERANCES (UNLESS SPECIFIED)		DIMENSION STYLE		SCALE	DESIGN UNITS	THIRD ANGLE PROJECTION	
			mm	INCH	MM/IN	---	METRIC		
		4 PLACES	± ---	± ---	DRAWN BY	DATE	TITLE		
		3 PLACES	± ---	± ---	PDAI	2006/03/07	DVI_D-DVI_D S.LINK CBL		
			2 PLACES	± ---	± ---	CHECKED BY	DATE		
			1 PLACE	± ---	± ---	ZXDENG	2006/03/07		
			ANGULAR ± ---°		APPROVED BY	DATE			
					BORON	2006/03/07			
			DRAFT WHERE APPLICABLE MUST REMAIN WITHIN DIMENSIONS		MATERIAL NO.	DOCUMENT NO.		SHEET NO.	
					SEE TABLE	SD-88741-001		1 OF 2	
					SIZE	THIS DRAWING CONTAINS INFORMATION THAT IS PROPRIETARY TO MOLEX INCORPORATED AND SHOULD NOT BE USED WITHOUT WRITTEN PERMISSION			
					A4				

tb_frame_A4_P_ME_T
 Rev. D 2004/04/02

6 5 4 3 2 1

7 6 5 4 3 2 1

NOTE: 1. OVERMOLD SPECIFICATION

- 1.1 DVI BOOT MOLDED WITH SNOW WHITE PVC RESIN P/N IS 887800076.
- 1.2 UL94V-0, COLOR: MAD432
- 1.3 HARDNESS (DUROMETER): SHORE A 90-95

2. MECHANICAL SPECIFICATION

- 2.1 CABLE SHOULD STAND THE PULL FORCE 89-111N FOR 30 SECONDS WITH NO VISIBLE TERMINATION DAMAGE.
- 2.2 CABLE SHOULD PASS THE FLEX TEST IN 100 CYCLES AT EACH OF PLANES, PER EIA 364-41, CONDITION 1.

3. CABLE ELECTRICAL SPECIFICATION

- 3.1 DIELECTRIC STRENGTH: 300VDC FOR 10mS.
- 3.2 INSULATION RESISTANCE: 20 MEGA Ohms
- 3.3 DIFFERENTIAL LINES CHARACTERISTIC IMPEDANCE: 100±7 Ohms@TDR.

4. DVI CONNECTOR SPECIFICATION

- 4.1 REFER TO PRODUCT SPEC. PS74320-0001.
- 4.2 CONTACT PLATING: AU FLASH.

5. SHORTCIRCUIT AMONG DRAIN WIRES IS ACCEPTABLE.

6. THIS PRODUCT MUST MEET MX RoHS COMPLIANCE.

7. CONNECTION DIAGRAM

SHIELD	SHIELD	GROUND
PIN 24	PIN 24	TMDS CLOCK-
PIN 23	PIN 23	TMDS CLOCK+
PIN 22	PIN 22	TMDS CLOCK SHIELD
PIN 19	PIN 19	TMDS DATA 0 SHIELD
PIN 18	PIN 18	TMDS DATA 0+
PIN 17	PIN 17	TMDS DATA 0-
PIN 16	PIN 16	HOT PLUG DETECT
PIN 15	PIN 15	GROUND(+5V & HV SYNC.)
PIN 14	PIN 14	POWER +5V
PIN 11	PIN 11	TMDS DATA 1 SHIELD
PIN 10	PIN 10	TMDS DATA 1+
PIN 9	PIN 9	TMDS DATA 1-
PIN 7	PIN 7	DDC DATA
PIN 6	PIN 6	DDC CLOCK
PIN 3	PIN 3	TMDS DATA 2 SHIELD
PIN 2	PIN 2	TMDS DATA 2+
PIN 1	PIN 1	TMDS DATA 2-
DVI_D	DVI_D	CABLE FUNCTION

8. MATERIAL LIST

ITEM	DESCRIPTION
C	DVI THUMB SCREW 887806077
B	DVI_D SINGLE CHANNEL G/F CONNECTOR 743230101
A	DVI SINGLE LINK CABLE (SEE TABLE)

ENTER DESCRIPTION EC NO: DG2006-0186 DRW: PDAI 2006/03/09 CHKD: 2006/03/09 APPR: TIAN 2006/03/10 REV	QUALITY SYMBOLS	GENERAL TOLERANCES (UNLESS SPECIFIED)		DIMENSION STYLE MM/IN		SCALE ---	DESIGN UNITS METRIC	THIRD ANGLE PROJECTION
	▽=0	mm	INCH	DRAWN BY	DATE	TITLE		
	▽=0	4 PLACES ± ---	± ---	PDAI	2006/03/07	DVI_D-DVI_D S.LINK CBL		
		3 PLACES ± ---	± ---	CHECKED BY	DATE			
	2 PLACES ± ---	± ---	TEDDY	2006/03/07				
	1 PLACE ± ---	± ---	APPROVED BY	DATE				
	ANGULAR ± ---°			BORON	2006/03/07	MOLEX MOLEX INCORPORATED		
DRAFT WHERE APPLICABLE MUST REMAIN WITHIN DIMENSIONS			MATERIAL NO. SEE TABLE		DOCUMENT NO. SD-88741-001		SHEET NO. 2 OF 2	
			SIZE A4		THIS DRAWING CONTAINS INFORMATION THAT IS PROPRIETARY TO MOLEX INCORPORATED AND SHOULD NOT BE USED WITHOUT WRITTEN PERMISSION			

tb_frame_A4_P_ME_T
Rev. D 2004/04/02

6 5 4 3 2 1